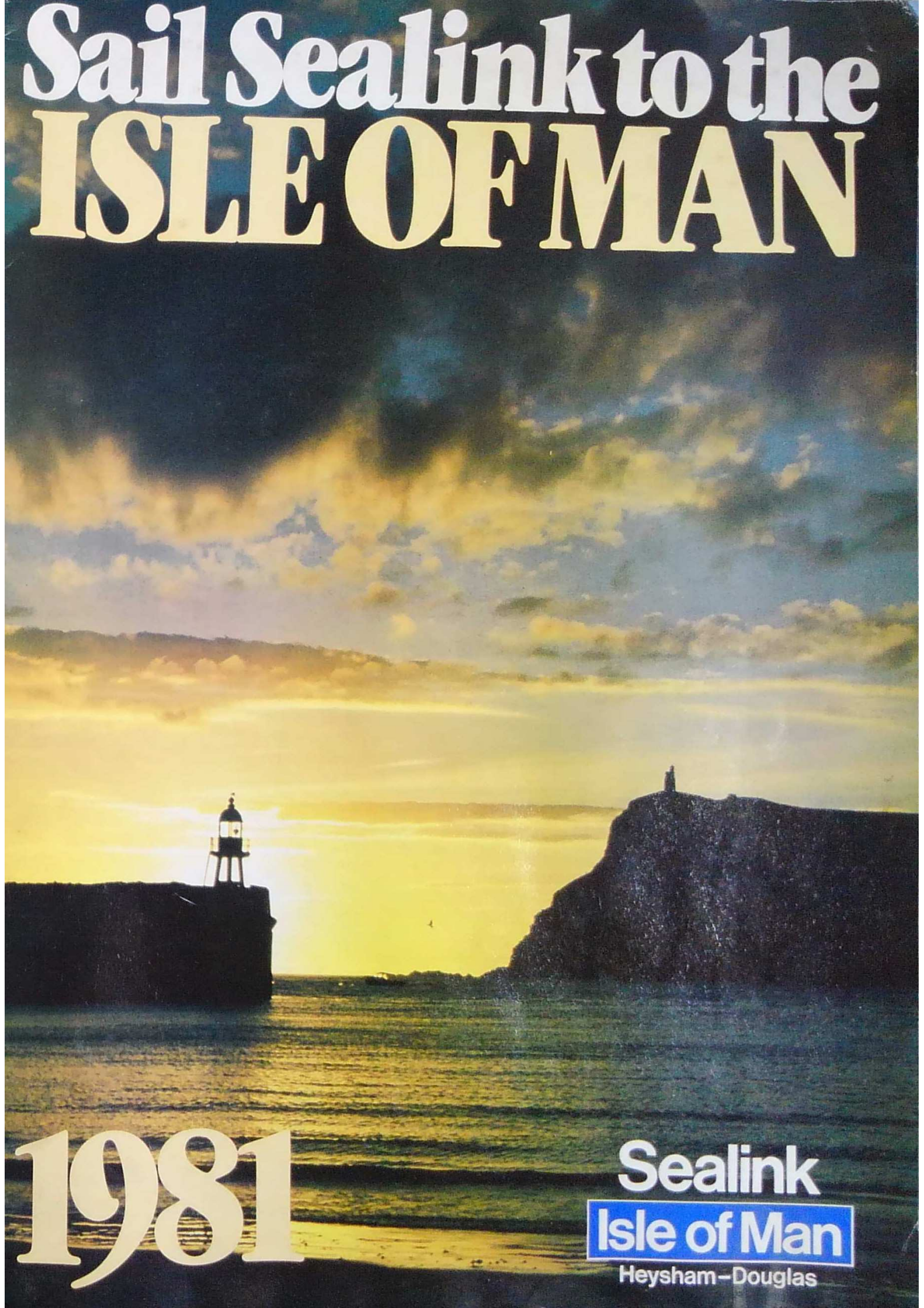


# Sail Sealink to the ISLE OF MAN



1981

Sealink  
Isle of Man  
Heysham-Douglas

# ISLE OF MAN 1981

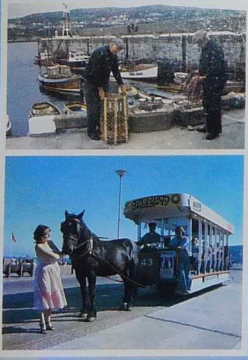
...vases which link to the legendary Isle of Man, ... of the island's history ... Viking and ... and lively ... environment ... many ... way, as you ...

**Sealink makes it easy**  
 ... the ... reach with ... or Lancaster ...

You'll feel your holiday beginning when you board the fast, modern 'Manx Viking', a fully stabilised ship with every facility for your comfort. Enjoy fine sea views from air-conditioned lounges with comfortable soft seating, watch large-screen TV if you wish, or settle down for a meal in the 120-seat cafeteria. There's a friendly bar, with even friendlier prices, to relax in, or you can browse in the well-stocked shop. Sailing with Sealink is a fine way to start your holiday, and it costs less than you might think.

The Isle of Man welcomes you in all Seasons, but it's worth remembering that not only is there more room off-peak, it's cheaper, too!

**Now's the time to book**  
 Check out the offers in this brochure, complete the relevant reservation form and send (or take it) to the address shown.



## Contents

The Service .....	4
The Price .....	5
Getting there .....	6
The Ship .....	7
Train/Car Booking Form .....	8
Holidays in the Isle of Man .....	9
Island Magic Holidays .....	10-13
Daycruises .....	14
Daystretchers .....	15
Sea Beds Holiday Accommodation Service .....	16
General Information .....	17
Conditions .....	18
Island Magic Holiday Booking Form .....	19
Sea Beds/Daystretchers Booking Form .....	20



# The Service

## HEYSHAM ⇄ DOUGLAS

31 January to 22 May and 5 October to 31 December

Heysham	depart	1245	Mondays to Fridays
Heysham	arrive	1645	
Heysham	depart	2345	Fridays, Saturdays and Sundays
Heysham	arrive	0600	Saturdays, Sundays and Mondays
Isle of Man	depart	0730	Mondays to Saturdays
Heysham	arrive	1140	
Isle of Man	depart	1500	Fridays and Sundays
Heysham	arrive	1845	
22 May to 31 October			
Heysham	depart	0745 and 2345	daily
Heysham	arrive	1145 and 1630	daily
Heysham	depart	1730 and 1800	daily
Heysham	arrive	1130 and 2200	daily
No services			on 25, 26, 27 December

## Connecting rail services to and from Heysham from 1 June to 31 December 1981

To		Mondays to Saturdays	Sundays
Isle of Man	d	08 40	18 05
London Euston	d	08 55	18 29
Birmingham New St.	d	09 14	19 55
Derby	d	10 06	19 45
Stoke-on-Trent	d	10 46	20 19
Crewe	d	10 32	20 40
Warrington	d	10 45	20 55
Wigan	d	10 32	20 32
Manchester Victoria	d	10 15	20 15
Bolton	d	10 32	20 32
Blackburn	d	10 27	20 35
Blackpool North	d	10 43	20 18
Preston	d	11 23	21 18
Lancaster	a	11 42	21 42

Glasgow Central	d	08 23	17 50	18 23
Edinburgh	d	08 08	18 10	18 08
Newcastle	d	06 45	17 45	17 10
Carlisle	d	09 56	20 04	19 35
Lancaster	a	10 53	21 03	20 35
Leeds	d	09 35	19 35	18 17
Morecambe	a	11 44	21 34	18 41

Bus connection			
Lancaster	d	11 55A	22 10B
Morecambe	a	12 15A	22 40B
Heysham	a	12 30	23 00
Heysham Ship	d	12 45C	23 45D
Douglas Ship	a	16 45C	06 00D

From		Mondays to Saturdays	
Isle of Man	d	07 30E	18 00F
Douglas Ship	d	11 30	22 00
Heysham Ship	a	11 50A	
Morecambe	a	12 00	22 40B
Lancaster	a	12 30	

Morecambe	d	13 19	
Leeds	a	15 24	
Lancaster	d	12 47	14 21
Carlisle	a	13 47	
Newcastle	a	16 21	
Edinburgh	a		17 15
Glasgow Central	a	15 10	
Lancaster	d	13 15	
Preston	a	13 37	
Blackpool North	a	14 39	
Blackburn	a	14 57	
Bolton	a	14 13	
Manchester Victoria	a	14 33	
Wigan	a	14 14	
Warrington	a	14 26	
Crewe	a	14 52	
Stoke-on-Trent	a	15 49	
Derby	a	16 44	
Birmingham New St.	a	16 01	
London Euston	a	17 07	

- A Ship passengers conveyed between Lancaster/Morecambe and Heysham by special Sealink bus service.
- B Ship passengers conveyed from Lancaster and Morecambe to Heysham Sealink terminal by inter connecting local bus service.
- C Operates daily 1 June to 4 October, Mondays to Fridays 5 October to 31 December.
- D Operates daily 1 June to 4 October, Fridays, Saturdays and Sundays 5 October to 20 December.
- E Operates daily 1 June to 4 October, Monday to Saturdays 5 October to 31 December.
- F Operates daily 1 June to 4 October, Fridays and Sundays only 5 October to 20 December.
- c On Saturdays from 31 October 19.40.
- d On Saturdays depart 20.27.
- e From 1 November depart 19.37.
- f On Saturdays until 12 September depart 09.12.

No sailings 25, 26 and 27 December.

Similar services run from 3 January to 31 May. Please enquire for details at British Rail Travel Centres, Rail Appointed Agents and Sealink offices.

Note: Services shown in light type indicate a connecting service.

# The Price

	1 Jan-16 May	17 May-11 Sept	12 Sept-31 Dec
Day of travel	Any day	Sun-Thur	Fri-Sat
Car	£19.90	£26.50	£19.90
Adult	£9.90	£11.30	£9.90

- Prices are for single journeys, return rates are calculated by adding the single fares.
- Children under 5 travel free.
- Children 5 but under 14 travel at half price.

- Holder of Students or Senior Citizens Railcards can obtain a 50% reduction on the adult single fare at any time, except Fridays and Saturdays 17 May to 11 September.

## Other Charges

- Motorcycle (including use of special rack) £9.50.
  - Motorcycle with sidecar £13.50.
  - Motorised caravans up to 5m long and less than 2m high travel at car rate applicable to time of year. Over 5m long and less than 2m high - supplement per 0.30m over 5m £2.25.
  - Towed trailers under 2m high - per 0.30m including towbar £2.25.
  - Vehicles equipped to carry up to 12 passengers and exceeding 2m in height are subject to a surcharge of 60%.
  - Bicycles £2.00.
  - Dogs £4.00.
- Note: Advance notification is required of vehicles in excess of 2.15m in width and these will be subject to a 60% surcharge.

# Special Return Fares

## Midweek return

Tuesdays, Wednesdays, Thursdays in both directions within a 3 month period.

6 January to 14 May and 15 September to 31 December £18.00

19 May to 10 September £21.00

## Three day return

Out any day, return within next two days. Tickets issued on Friday valid

for return journey on Monday.

3 January to 16 May and 12 September to 31 December £13.00.

## Long day cruise

Saturdays, 3 January to 16 May and 12 September to 19 December. Depart Heysham 2345.

Depart Isle of Man 1800 Sundays. Saturdays to Wednesdays. 17 May to 9 September. Depart Heysham 2345.

Depart Isle of Man 1800 Sundays to Thursdays £11.30.

## Short day cruise

Fridays 9 January to 15 May and 18 September to 19 December. Sundays to Thursdays 17 May to 10 September.

Daily 12 September to 4 October. Depart Heysham 1245. Depart Isle of Man 1500 £9.90.

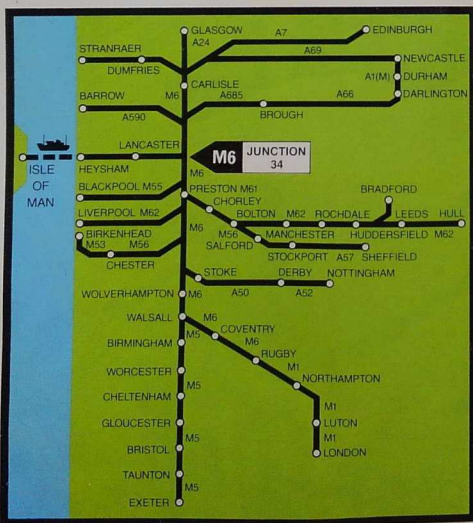
# Getting there by Rail

Excellent rail services run to Lancaster and Morecambe



# Getting there by Road

Heysham is just a stride away from junction 34 on the M6 motorway - it's easy and you can take your car with you to the Island.



# Sail "Manx Viking" with Sealink to the Isle of Man... for passengers and drive-on, drive-off vehicles.

Our ship the Manx Viking is packed full of all the 'up-to-the-minute' features you need to travel in style and arrive refreshed, relaxed and ready to enjoy the Isle of Man's many special attractions.

These are the sort of things we mean...

### Luxury Seating.

Luxury seating hardly describes the sumptuous, deeply-padded, armchair type seats aboard Manx Viking. And, what's more there are plenty of them - more than 200 in the quiet lounge, and almost 300 in the video lounge, situated further aft on the passenger deck.

Further seating is available in the bar and, of course, in the cafeteria, which can accommodate 120 people. All this which adds up to a comfortable seat for every one of Manx Viking's passengers.

### Stabilisation.

Manx Viking is equipped with a very effective stabilisation system to keep you on an even keel.

### Air Conditioning.

All passenger areas aboard Manx Viking have full temperature controlled air-conditioning - so you should never find yourself too hot or too cold, or subjected to a stale atmosphere full of fumes or cigarette smoke.

### Shopping.

Manx Viking's shop is situated in the centre section of the ship and offers toilet requisites, books, magazines and sweets.



There is also a selection of Isle of Man souvenirs - ideal for that last-minute holiday gift you may have forgotten.

The fully-licensed bar opens onto the sun-deck where, weather permitting, you can enjoy the sea air or make a start on that holiday tan.

### First Class Catering.

Situated centrally on the main passenger deck, Manx Viking's cafeteria offers a high standard of modern, self-service catering.

This spacious cafeteria can accommodate 120 people in a pleasant, relaxing atmosphere and offers a wide menu of tasty snacks, hot and cold meals and beverages - with generous helpings and very reasonable prices.

Special children's portions are also available at reduced prices.

### Video Television

If you are looking for a pleasant way to while away your journey (or if you want to keep the children amused) what better way than to watch a movie? The 292 seat lounge situated at the rear of the passenger deck features a large screen video system and offers a wide variety of cinema, TV and special interest films.

Manx Viking is our usual ship but from time to time other vessels are introduced to the service.



# Train/Car Booking Form

It's easy booking with Sealink. Just complete this form and take it to your travel agent or British Rail Travel Centre or send it to Sealink, The Quay, HEYSHAM, LA3 2XF Lancs, or Sealink, Sea Terminal, DOUGLAS, Isle of Man. This form will be returned to you with provisional reservations and a quotation.

RESERVATIONS REQUIRED		RESERVATIONS ALLOCATED Office Use					
From	To	Inward Sailing	Outward Sailing	Ref.	Ref.	Inward Sailing	
From Heysham	To Isle of Man	From Isle of Man	From			From	
To Isle of Man	To Heysham	To Heysham	To			To	
Date	Date	Date	Date			Date	
Time	Time	Time	Time			Time	
Alternative Acceptable		From Heysham	From Isle of Man	If payment reaches SEALINK later than			
To Isle of Man	To Heysham	the reservation will be CANCELLED.					
Date	Date	<b>NOTE:</b> Tickets can be obtained on completion of the ACCEPTANCE below and the return of the form with remittance.					
Time	Time						

VEHICLE(S) - include details of all cars, motor-caravans, mini-buses, trailers and motorcycles. Length must include any tow-bar(s). Height must include any roof-load.

	Reg. No.	Make & Model	Year	Length	Height
Motor Vehicle					
Trailer					
Motorcycle		Solo/Combination			

NAME AND ADDRESS OF APPLICANT				No. of Passengers		
USE BLOCK LETTERS PLEASE	Mr/Mrs/Miss	Adults including applicant	Children*	Child ages		
Street						
Town						
County	Postcode	Sealink/CU Insurance required YES/NO or Delete as necessary				
Phone: Home	Business					

RAIL TICKETS		Number of Passengers	Adults	Student/Senior Citizen <sup>2</sup>	Children (5-13)
Station From	To HEYSHAM*				
Station To	From HEYSHAM*				

\* Special Bus connections to and from LANCASTER and MORECAMBE <sup>2</sup> Please show Railcard number here

QUOTATION Office Use		Ticket Code	Outward Rate	Charge	Inward Rate	Charge
Motor Vehicle						
Trailer						
Adults						
Children*						
Rail						
*5-13 years		TOTAL	TOTAL			

**Please do not complete the acceptance below until the form is returned with reservations and quotation.**

I have read the conditions set out in this publication and agree to be bound by them. The reservations offered are accepted and I enclose cash/cheque<sup>1</sup> 'p.o.'<sup>2</sup> or have entered my credit card number above.

<sup>1</sup> If this form is sent direct to Sealink please make cheques/postal orders payable to 'Sealink UK Ltd.'

Signature \_\_\_\_\_ Date \_\_\_\_\_

TICKETS CAN BE ISSUED AGAINST PAYMENT OF THIS ACCOUNT - please return it with remittance. Additional passenger tickets may be purchased from the port office before commencing your outward journey.

Sealink Ref.	Credit	plus Insurance as requested	TOTAL REMITTANCE
Total Payment Required for Travel	£	£	£

# With Sealink you can choose exactly the kind of holiday you want

The Isle of Man is ideal for your annual holiday, and there's also much to be said for a refreshing few days off in Spring, Autumn or Winter. Whichever you choose, Sealink can save you money. And for those who can only take a shorter break from day-to-day routine, what better than an overnight 'Daystretcher' or Day Cruise to the Island? They provide just the change of scene you've been wanting.

## An enjoyment-packed annual holiday.

The Island is only 33 miles long by 12 miles wide, but it's full of interest. In Douglas you'll find busy hotels, restaurants, the Casino, Theatre, Lido, Coliseum, The Solarium and the Villa Marina. You can play tennis, golf, swim, sea-fish and dance the night away. But the Isle of Man should also be explored, from its gorse-covered mountains and bird sanctuaries to the famous Laxey wheel. Bring your own car, motor cycle or bicycle, or use the local transport. Whatever your holiday tastes, Sealink can help by making your travel arrangements or finding accommodation with the convenient 'Sea Beds' service.

## Island Magic Holidays - the perfect short break.

Whether as a much-needed breather or a second holiday, this is just what you need to set you up - a few days away at really attractive prices (special rates for groups, too). You can decide your own holiday plan - how long to stay, which tariff you require, which tours and excursions to enjoy.

## Daystretcher - a night at sea, 12 hours on the Island.

These marvellous off-peak trips provide a whole variety of new experiences: sailing through the night to Douglas, to be followed by coffee, breakfast, a tour of part of the island, lunch, freetime and an 1800 departure home with a free bottle of wine... and all at a bargain price!

## A day cruise to the Island and back.

In the Summer Season you can cruise to Douglas and back on the 'Manx Viking' with an hour ashore in Douglas and a free bottle of wine for the return journey. At only £8 each for adults, it's a give-away!

## How to Book.

Each type of holiday has a special application form in the back of this brochure, so please make sure that you use the correct one:

- Island Magic Holidays Page 19
- Daystretcher and Day Cruise Page 20

and don't forget to apply for both the outward and the return journey reservations at the same time.



# ISLAND MAGIC HOLIDAYS to the Isle of Man.

1 January to 22 May and 4 October to 31 December Winter, Spring and Autumn

Island Magic Holidays are designed to give you an interesting short break in the Isle of Man at low cost. Sea travel, transfer to your hotel, an excursion on the island plus a super bottle of wine (for adults over 17 years of age) are constituent parts of your Island Magic Holiday. Special

low prices enable you to take your car to explore the island. Arrangements with British Rail include travel by train from stations in Cheshire, Greater Manchester, Lancashire and Merseyside within the basic price and special reduced fares from the rest of the UK.

## TOUR M1 via Heysham - Isle of Man Day Service

- Tour includes:**
- Sea travel from Heysham to Isle of Man and return.
  - Transport between Douglas Sea Terminal and hotel.
  - Dinner, bed and breakfast, hotel accommodation in Douglas for two nights.
  - All taxes and service at hotel.
  - Super bottle of wine.
  - Special excursion and lunch during your stay.

**TARIFF A**  
2 nights D, B & B

Adults	£ 39
Juvenile (14-17)	31
Child (5-13)	28
Each additional night	
Adults	£9; Juveniles £7; Child £6

**TARIFF B**  
2 nights D, B & B

Adults	£ 33
Juvenile (14-17)	31
Child (5-13)	28
Each additional night	
Adults	£7; Juvenile £7; Child £5



**Departures from Heysham**  
Mondays, Tuesdays, Wednesdays, Thursdays, Fridays at 1245.

**Departures from Douglas, Isle of Man**  
Mondays, Tuesdays, Wednesdays, Thursdays, Fridays, Saturdays at 0730, Fridays and Sundays at 1800.

Adults	£ 33
Juvenile (14-17)	31
Child (5-13)	24

## TOUR M2 via Heysham - Isle of Man Service

- Tour includes:**
- Sea travel from Heysham to Isle of Man and return.
  - Transport between Douglas Sea Terminal and hotel.
  - Breakfast on morning of arrival then dinner, bed and breakfast, hotel accommodation for two nights.
  - All taxes and service at hotel.
  - Super bottle of wine.
  - Special excursion and lunch during your stay.

**TARIFF A**  
2 nights D, B & B

Adults	£ 39
Juveniles (14-17)	31
Child (5-13)	28
Each additional night	
Adults	£9; Juveniles £7; Child £6

**Departures from Heysham**  
Fridays, Saturdays and Sundays at 2345.

**Departures from Douglas, Isle of Man**  
Mondays, Tuesdays, Wednesdays, Thursdays, Fridays, Saturdays at 0730, Fridays and Sundays at 1800.

**TARIFF B**  
2 nights D, B & B

Adults	£ 35
Juveniles (14-17)	33
Child (5-13)	26
Each additional night	
Adults	£7; Juveniles £7; Child £5

## The cost of your Island Magic Holiday.

To give our passengers value for money, tours are priced for a basic 3 days 2 nights accommodation. For extra nights in the Island just add the amount shown for each additional night and build up your own exclusive "Any Length Holiday" - long weekend to 2 weeks full holiday.

### The Youngsters.

Holidays are for children too, so Sealink has special rates for the younger members of the family. Prices include sea crossing, transport between the sea terminal and hotel and accommodation just the same as for adults together with the special excursion and lunch.

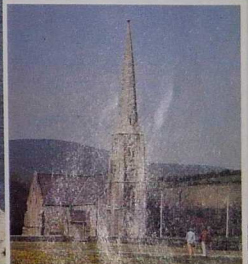
For children under 5 years of age please see special arrangements on page 13.

### Group Travel.

There is a wide choice of Island Magic Holidays for groups travelling together - why not make up a party? Remember it's easy to construct the holiday you require.

### FREE TICKETS!!!

Special facilities for party organisers are available - one free ticket for every 25 full fare paying passengers travelling together.



# How to book your Island Magic Holiday

- With an Island Magic Holiday you really can pay your money and take your choice.
- There's a choice of days duration you can stay for.
- There's a choice of hotels to pay.

• Select your hotel with an alternative from the tariff (A or B) depending on which suit your requirements. If accommodation is not available in the hotels listed the right is reserved to offer bookings in other establishments in a different tariff.

• Complete the booking form on page 19 and take or send it to Sealink, at the address shown on the booking form; British Rail Travel Centres or Sealink appointed agents.

## Island Magic Hotels

Island Magic Hotels are graded by Sealink into tariff categories A or B depending on the facilities offered and type of accommodation available - please note the following-



### HOTELS OPEN THROUGHOUT THE YEAR

\* Denotes hotels open throughout the Island Magic season, other hotels close during November, December, January and February.

### HOTEL ROOMS WITH PRIVATE FACILITIES

\* Denotes rooms with private facilities included in the tour cost. Other hotels have rooms with private facilities for which payment must be made to the hotel on arrival as a supplement.

### HOTELS GRADE "A"

\* Villiers Hotel, Loch Promenade, Douglas.

All rooms with facilities, grill room and table d'hôte restaurants, lunch buffet bar, centrally heated throughout, radio,

intercom, taped music in all bedrooms, baby sitting and listening services, children's playroom, games room and refreshments served 24 hours a day.

\* Seiton Hotel, Harris Promenade, Douglas.

The hotel has one of the finest positions on the sea front with its own private car park, comfortable spacious lounges and restaurants and a justified reputation for good food and friendly service. All bedrooms have radio and facilities, there is a children's play room, baby listening service and full central heating.

### GRADE "B"

\* The Good Companions Hotel, Queen's Promenade, Douglas.

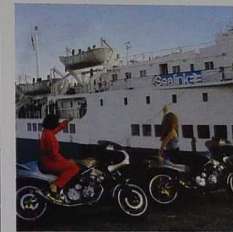
New modern lounge with dance floor, night porter, licensed for residents, lift, all rooms have heating, radios, intercom and baby listening and tea making facilities.

# Take the car

...or your motorcycle

...or even your bicycle

THE PRICE - £15.00



There's room for your motorcycle on the Sealink ship and special securing racks to ensure your machine is carried properly - it's only £10. Just fill in details of your machine on the booking form and add £10 to the cost of your holiday.

One of the best ways to see the Isle of Man is on a bicycle. Just for you Sealink presents the opportunity to take your cycle free.

# ...or go by train

It's easy going on an Island Magic Holiday by rail and sea and there are special rail supplements for travel via Lancaster and Morecambe including road transport from those stations to the

Sealink Terminal at Heysham. The fares shown are from counties but the name of the rail station should be shown on the booking form.

### SPECIAL ARRANGEMENTS

Children under five years of age are carried free on the sea journey but accommodation rates cannot be quoted for them. If required Sealink will make special application to hotel management and every effort will be made to obtain suitable accommodation. Payment must be made to the hotel on arrival.

Sealink welcomes the disabled passenger providing sufficient advance notice has been given. Sealink is always pleased to make arrangements for any individual who requires special assistance at ports or on board ships, and every effort will be made to obtain suitable accommodation.

Special diets - should you require a special diet please advise Sealink with your booking request so that suitable accommodation can be selected and the hotel informed in advance.

### Sealink assistance in the Island

Should you require Sealink's assistance in the Island with your Island Magic Holiday please contact-

Sealink,  
Sea Terminal,  
Douglas,  
Tel: 24241

COUNTY	Supplement Adult 14 years and over	Supplement Child 5 years and under 14 years
Cheshire, Greater Manchester, Lancashire, Merseyside	Nil	Nil
Clywd, Cumbria, Derbyshire, Salop, Staffordshire, Yorkshire	£3	£1.50
Cleveland, Dumfries, Durham, Galloway, Gloucester, Gwynedd, Hereford, Humberside, Leicestershire, Lincolnshire, Nottinghamshire, Powys, Tyne & Wear, Warwickshire, West Midlands, Worcestershire	£6	£3
Avon, Bedfordshire, Berkshire, Borders, Bucks, Cambridge, Dyfed, Glamorgan, Gwent, Lothian, Norfolk, Northumberland, Northamptonshire, Oxford, Strathclyde, Suffolk, Wiltshire	£9	£4.50
Devon, Dorset, Essex, Fife, Greater London, Hampshire, Herts, Somerset, Surrey, Tayside	£12	£6
Cornwall, Crampian, Highland, Isle of Wight, Kent, Sussex	£15	£7.50

# Our Special Excursion and lunch during your stay

These provide an entertaining journey into the past and an opportunity to sample a pub lunch in very pleasant surroundings. The days your special excursion will run will be as follows:-

<b>If you arrived on the Island on-</b>	<b>Your tour will be on-</b>
Monday morning or evening	Tuesday
Tuesday evening	Wednesday
Wednesday evening	Thursday
Thursday evening	Friday
Friday evening	Saturday
Saturday morning	Saturday
Sunday morning	Sunday

the leisurely Victorian era with white smoke drifting beside your carriage and the smell of heather, fern and bracken.

**B** A journey by vintage tram from Douglas to Ramsey with a lunch time stopover in Laxey with time to see the Laxey Wheel. Again this trip is exclusive to Island Magic holidaymakers. Imagine the hiss of the trolleywheel as

you clatter through the green countryside high above the coastline.

You will be advised which of these are arranged for your holiday but groups may like to select a specific tour. If you have a special interest in vintage transport we can arrange for you to take both tours, if your stay is long enough. Please ask us for details.



**A** A journey on the Isle of Man Victorian steam railway from Douglas to Castletown and return with a lunch time stopover in Castletown. These will be special steam hauled trains run for Island Magic holidaymakers. Imagine yourself in

# DAYCRUISES

Depart any day Sunday to Thursday 23 May to 4 October. Take a cruise and get the 'big ship' feel. Our ships fully stabilised and has all the features of a cruise ship. The cruise lasts around one hour. When this is over you can use the ship's gift shop.

along the 1 1/2 miles of Douglas promenade. However, you do need to allow around 40 minutes for this. The price includes a bottle of wine, compliments of Sealink, to be collected on your return journey (for adults 18 and over). For passengers aged 14-17 years a £2 voucher is presented for exchange in the ship's gift shop.

**THE PRICE**  
£8.00 Adults £2.00 Children (5-13 years)

**ADVANCE BOOKING THROUGH SEALINK HEYSHAM IS STRONGLY RECOMMENDED AS THE NUMBER OF PLACES ALLOCATED TO THE DAY CRUISE IS LIMITED.**



# DAYSTRETCHERS

## Up to 12 hours on the Island

Depart Saturday night - return Sunday evening. Available throughout 1981

Go aboard to the magic Isle of Man and see how much fun can be packed into one day! During off peak and winter months we have an interesting journey into vester-year and during the summer an Island Coach tour is arranged.

**THE TOUR**  
3 January to 16 May and 10 October to 19 December

- HEYSHAM depart 23.45 Saturday night
- On arrival DOUGLAS make your way across the road to the VILLIERS HOTEL where morning coffee will be served
- At around 08.30 a full Manx breakfast will be served in the hotel
- Depart VILLIERS HOTEL at 11.00 by special bus to Derby Castle terminus

- Your special tram departs 11.15 to LAXEY. There is a lunch time stopover in LAXEY at the MINES TAVERN with an opportunity to visit the Laxey Wheel
- After lunch the train continues on to RAMSEY and then returns to DOUGLAS at around 15.15. You are free until 17.45
- The ship departs at 18.00 for HEYSHAM arriving at 22.00
- On your return journey, collect a bottle of wine (adults 18 years and over). A £2 voucher exchangeable at the ship's gift shop is presented to the 14 to 17 year olds.

### THE TOUR

- 23 May to 3 October
- HEYSHAM depart 23.45 Saturday night
  - A coach awaits your arrival at DOUGLAS to begin an Island Tour
  - During the tour there is a stop for a full Manx breakfast

- Arrive back into DOUGLAS at around mid-day
- Free time to explore DOUGLAS until 17.45
- The ship departs at 18.00 for HEYSHAM arriving at 22.00
- On your return journey, collect a bottle of wine (adults 18 years and over). A £2 voucher exchangeable at the ship's gift shop is presented to the 14 to 17 year olds.

### THE PRICE

£12.50 Adults  
£7.50 Children (5-13 years)

**ADVANCE BOOKING THROUGH SEALINK HEYSHAM IS STRONGLY RECOMMENDED TO AVOID DISAPPOINTMENT**





# SEA BEDS

## The Sealink accommodation service - your link between travel and accommodation

Are you a holidaymaker? Do you have a holiday in mind on the Isle of Man? Sealink's new Sea Beds service is the simple way to solve your travel and accommodation problems in one go. All you have to do is fill in the form and mail it to us. Sealink, specialist in sea travel, also offer the expertise of our Isle of Man-based Sea Beds staff whose established links with Island hotels and guest houses ensure that you get the right accommodation to match your travel arrangements.

### Where to stay?

Because you book with Sea Beds you have the choice of the range of Isle of Man accommodation - at the price you want. We handle the booking, and you don't

have the worry. Just state your preference and leave the rest to us.

### Bring your Car!

Your holiday starts when you leave home. Load your luggage into the boot, drive down to Heysham, and join Sealink's car ferry on a mini cruise to the Isle of Man. It's great fun, with plenty of good food and time to relax.

### What does it Cost?

Nothing. The Sea Beds service is absolutely free; you pay no more for your travel and accommodation than if you had booked them separately.

### Travel Only

If you have made your own accommodation reservations, we will be happy to help with your travel arrangements.

### USING SEA SERVICES FROM HEYSHAM

#### By Car or By Rail

It's easy to take your car with Sealink. From your own front door to your hotel you'll have the comfort and convenience of your car all the way to the Isle of Man. Then you are free to roam the Island's roads at will. No problems with strange cars and no special licences needed.

If you prefer to travel by rail, our Sea Beds Accommodation service works just as well. You tell us what you want, and we'll organise it for you.

A Company representative will be on hand at Douglas to help and advise you when you arrive.

## General Information

### 1981 SERVICES

Our ships are fully stabilised to add to your comfort and operate as follows:- From Heysham there are sailings every day during the period January to May and October to December with two on Fridays. From late May to early October there are 2 sailings each day.

### Passengers

Reservations are essential throughout the year and can be made through British Rail Travel Centres, Sealink appointed Travel Agents or direct to Sealink, The Harbour, Heysham, Lancs or Sealink, Sea Terminal, Douglas, Isle of Man.

### By Car

Enjoy the freedom of taking your own car - just drive on and off the ship. It's great fun to have a car on the Island roads are quiet and there are over 500 miles of them to explore.

### Rail and Sea

It's quick and it's comfortable when you travel by train to Lancaster or Morecambe, with special buses to take you to our terminal at Heysham. Attractive rail and sea prices are available, with through tickets from your local rail station and convenient connecting services.

### Senior Citizens and Students

Holders of Senior Citizens' Railcards or Student Railcards travel at a 50% reduction on the normal price except Fridays and Saturdays 17 May to 11 September.

### Group Travel

Group travel tickets are available for parties of 20 or more travelling together and there are free tickets for the organisers. Further details from Sealink at Heysham or Douglas.

### Self-catering Holidays

"Sea Beds" offer inclusive self-catering holidays in the Isle of Man from January to May and October to December at special off-peak prices.

Further details from "Sea Beds," Sealink, Sea Terminal, Douglas, Isle of Man. Telephone 0624 24249.

### Conferences

Sealink can help with travel arrangements for your conference on the Island, too. Further details from Sealink, Sea Terminal, Douglas, Isle of Man.

### Tourist Information

If you would like to know more about the Island, get in touch with the Isle of Man Tourist Board, 13 Victoria Street, Douglas, Isle of Man. Telephone 0624 4323. They'll be glad to help you.

## How you can help us to help you

Every year Sealink carries thousands of passengers and cars to the Isle of Man. It calls for organisation if we are not to keep you waiting at the start or end of your holiday. To save you any inconvenience later on, why not read through the following notes?

### Embarkation Times

Often a sticky problem! We don't want to leave you behind, so please be sure to give yourself plenty of time to arrive at the port. Remember that tides wait for no man!

**Passengers without cars** Please be on board at least 15 minutes before the advertised departure time.  
**Passengers with cars** We always have a lot of vehicles to get on board, so please report no later than 45 minutes before the advertised departure time.

### Luggage

If you are taking your car, you can take as much personal luggage as you like, but be prepared to remove any luggage (and rack) from the roof. If you are not travelling by car there is a free luggage allowance of 50 kilos per adult and 25 kilos per child.

### Dogs

Sealink does not provide kennels or cages for dogs and, except for guide dogs accompanying blind persons, we do not encourage dogs on board. If you bring one

with you it is on condition that it is housed in a solidly built kennel or cage provided by you before joining the ship. It must be placed in whatever space is allocated on board. If you are a motorist, you may leave your dog in the car during the crossing but this does not imply any waiver of the conveyance charge made. Limited access can be arranged during the voyage but this is entirely at the owner's risk - again we do not recommend this. Dogs are not allowed in any of the passenger accommodation.

### Holiday Insurance

By arrangement with the Commercial Union Assurance Company Sealink can arrange personal insurance for your holiday. Full details can be obtained when you book.

### Essential Documentation for Motorists

If you are taking a UK registered vehicle to the Isle of Man you must have the following documents with you:-  
**A certificate of insurance** which includes cover for the Isle of Man.  
**A current driving licence (not provisional)** or an international driving permit obtainable at RAC or AA offices.  
**The vehicle registration document** if the car is not registered in your name you should have a letter of authority entitling you to use the vehicle. For hired cars the

with you it is on condition that it is housed in a solidly built kennel or cage provided by you before joining the ship. It must be placed in whatever space is allocated on board. If you are a motorist, you may leave your dog in the car during the crossing but this does not imply any waiver of the conveyance charge made. Limited access can be arranged during the voyage but this is entirely at the owner's risk - again we do not recommend this. Dogs are not allowed in any of the passenger accommodation.

### Petrol

You are strongly advised not to top up the petrol tank of your car before joining the ship. The right is reserved to reduce the contents of the petrol tank in the interests of safety. Petrol may only be carried in the fuel tank of the vehicle.

### Vehicle Restrictions

Towed caravans are NOT permitted on the Isle of Man. This restriction does not apply to motorised caravans, motorhomes and the charges for these vehicles are shown on page 5

### Gas Cylinders

Gas cylinders may be carried, but they must be turned OFF and properly sealed. This also applies to refrigerators in motorised caravans. Please notify the loading officer of any gas cylinders carried.

Sealink welcomes the disabled passenger. Unfortunately our usual ship is not ideally suited to carrying the disabled - stairways and toilets being just two of the areas presenting particular problems. However, if you let us know in advance we will do everything possible to make your journey comfortable.



# Conditions

1. When travelling by sea, passengers and their luggage are carried subject to Sealink UK Ltd By-Laws Regulations and Conditions contained in their notices and publications. Any vehicle its contents and accessories are carried subject to Sealink UK Ltd Conditions of Carriage by Sea of ferries, motor vehicles, caravans and accessories. All vehicles carried under a charter agreement are subject to the carriage of goods conditions of the contract.

2. Sealink UK Ltd is not responsible for any loss or damage to passengers' luggage on this service. Sealink UK Ltd is not responsible for any loss or damage to passengers' luggage on any other service. Sealink UK Ltd is not responsible for any loss or damage to passengers' luggage on any other service.

3. Sealink UK Ltd shall be entitled to vary the contract at any time up to the commencement of the holiday to alter the price to reflect:

- (i) any increase in the cost of services making up the holiday provided otherwise than by Sealink UK Ltd their servants or agents;
- (ii) the imposition of any tax change or levy whether in the United Kingdom or the Isle of Man;
- 7. The hotel tariff scale shown in this brochure

of any company, firm or person engaged other than as servant or agents of Sealink UK Ltd in or in connection with the carrying out of such arrangements or bookings or the conveyance of any client and/or his or her vehicle accessories or luggage.

4. Every booking is accepted subject to the conditions imposed by the shipping, rail, coach, hotel, restaurant, insurance or other companies, firms or persons concerned with the holiday.

5. When travelling by rail, passengers and their luggage are carried subject to the British Railways Board's By-Laws Regulations and Conditions contained in their notices and publications. Any vehicle its contents and accessories are carried subject to the Board's General Conditions of Carriage.

6. Sealink UK Ltd shall be entitled to vary the contract at any time up to the commencement of the holiday to alter the price to reflect:

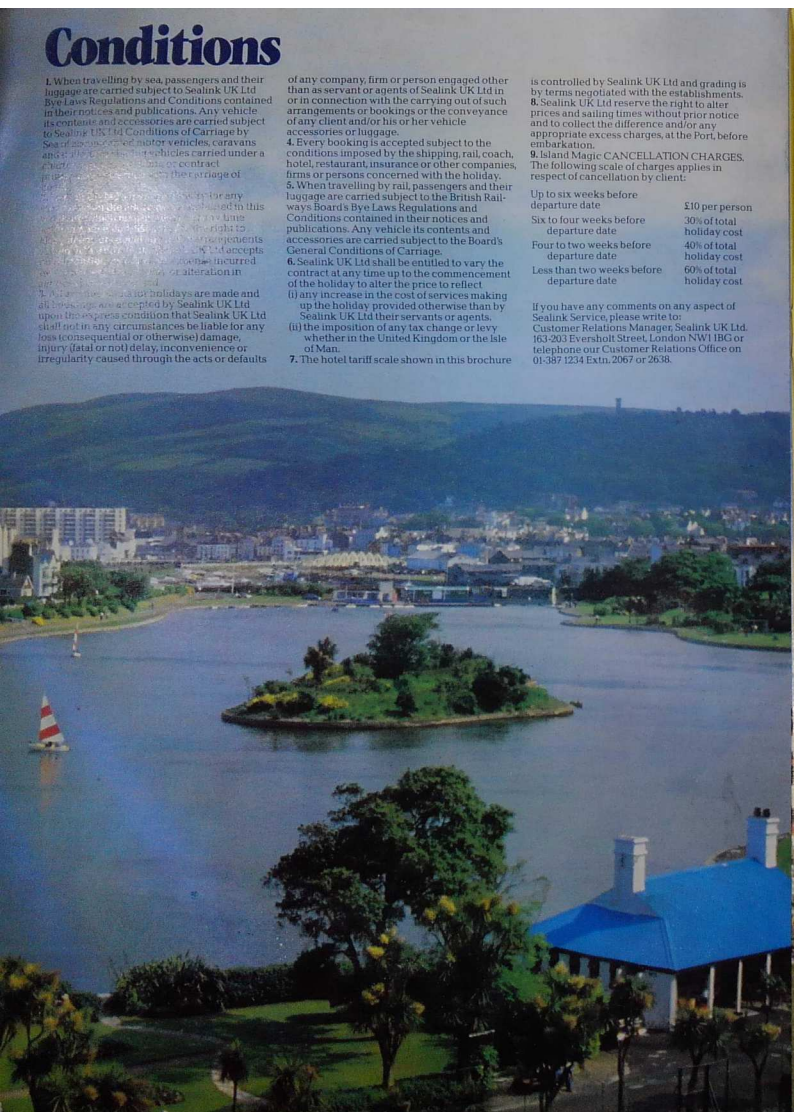
is controlled by Sealink UK Ltd and grading is by terms negotiated with the establishments.

8. Sealink UK Ltd reserve the right to alter prices and sailing times without prior notice and to collect the difference and/or any appropriate excess charges, at the Port, before embarkation.

9. Island Magic CANCELLATION CHARGES. The following scale of charges applies in respect of cancellation by client:

Up to six weeks before departure date	£10 per person
Six to four weeks before departure date	30% of total holiday cost
Four to two weeks before departure date	40% of total holiday cost
Less than two weeks before departure date	60% of total holiday cost

If you have any comments on any aspect of Sealink Service, please write to: Customer Relations Manager, Sealink UK Ltd, 163-203 Everholt Street, London NW1 1BG or telephone our Customer Relations Office on 01-387 1234 Extn. 2067 or 2638.



# Island Magic Holiday Booking Form

Please complete this form and send it together with deposit of £10 per person direct to your local Sealink Appointed Travel Agent, British Rail Travel Office or Principal Station or send it direct to: Sealink, Ladywell House, PRESTON, PR1 2TT. Tel: 0772-24221 Telex: 677396

REF: IM

Please phone our reservations section to ensure availability of holiday and provisionally book your accommodation.

## PASSENGER DETAILS

(Block capitals please)

Mr/Mrs/Miss\* \_\_\_\_\_ Initials \_\_\_\_\_ Children† \_\_\_\_\_

Mr/Mrs/Miss\* \_\_\_\_\_ Initials \_\_\_\_\_

Mr/Mrs/Miss\* \_\_\_\_\_ Initials \_\_\_\_\_

Mr/Mrs/Miss\* \_\_\_\_\_ Initials \_\_\_\_\_

Mr/Mrs/Miss\* \_\_\_\_\_ Initials \_\_\_\_\_

Mr/Mrs/Miss\* \_\_\_\_\_ Initials \_\_\_\_\_

†Please show ages of children and juveniles.

Name and address of applicant to whom all correspondence should be sent:

\_\_\_\_\_

\_\_\_\_\_

\_\_\_\_\_

Phone: Home \_\_\_\_\_ Business \_\_\_\_\_

## HOTEL DETAILS

Name of hotel \_\_\_\_\_

Total number of nights in hotel \_\_\_\_\_

Number of rooms of each type required

Single \_\_\_\_\_ with/without bath/shower\*

Twin-bedded (2 single beds) \_\_\_\_\_ with/without bath/shower\*

Double (Large bed) \_\_\_\_\_ with/without bath/shower\*

Three-bedded \_\_\_\_\_ with/without bath/shower\*

Number of rooms of each type required

Single \_\_\_\_\_ Double \_\_\_\_\_

Twin-bedded \_\_\_\_\_ Three-bedded \_\_\_\_\_

## PAYMENT BY ACCESS/BARCLAYCARD

Please enter your card number below:

\_\_\_\_\_

PLEASE NOTE: Payment by Access or Barclaycard is only acceptable when booking direct with Sealink. If you enter your credit card number the full amount will be charged against your account on confirmation of the booking.

## TRAVEL DETAILS

**By Sea**

Outward from Heysham Date \_\_\_\_\_ Time \_\_\_\_\_

Alternative date of departure \_\_\_\_\_ Time \_\_\_\_\_

Return from Isle of Man Date \_\_\_\_\_ Time \_\_\_\_\_

Alternative date of return \_\_\_\_\_ Time \_\_\_\_\_

**By Car/Motorcycle/Cycle**

Make and model of car/motorcycle\* \_\_\_\_\_

Registration No. \_\_\_\_\_ Year \_\_\_\_\_

Height (if over 2m) \_\_\_\_\_ Length \_\_\_\_\_

Ticket for bicycle(s) quantity \_\_\_\_\_

**By Rail**

Departing from (station) \_\_\_\_\_ County \_\_\_\_\_

Via \_\_\_\_\_ Date \_\_\_\_\_

Station of arrival \_\_\_\_\_ Lancaster/Morecambe\*

## PACKAGE TRAVEL INSURANCE

Comprehensive Insurance required with Commercial Union. Min. 5 days cover £2.80† per person YES/NO\*

## INSURANCE FOR MOTORISTS

Sealink's 'Peace of Mind' Insurance, in conjunction with Commercial Union and Europ Assistance. Tick box if you would like to retain

I enclose remittance of £ \_\_\_\_\_ (for direct bookings to Sealink, cheques and postal orders to be made payable to Sealink UK Ltd).

I have read the conditions set out in this leaflet and agree to be bound by them.

Signature \_\_\_\_\_

Date \_\_\_\_\_

\*Delete as appropriate. †Subject to alteration.


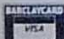
## BOOK THROUGH

# Sail Sealink to the Isle of Man 1981

## Sea Beds Booking Form

Name _____	Type of Accommodation Required:	Tick
Address _____	LICENSED HOTEL	<input type="checkbox"/>
_____	LICENSED PRIVATE HOTEL	<input type="checkbox"/>
_____ Tel: _____	UNLICENSED GUEST HOUSE	<input type="checkbox"/>
TRAVEL	BED & BREAKFAST	<input type="checkbox"/>
Please reserve return/single tickets for the following:-	BED, BREAKFAST & EVENING MEAL	<input type="checkbox"/>
PASSENGERS <input type="checkbox"/> Adult No. _____	SELF-CATERING	<input type="checkbox"/>
Children No. _____	LOCATION	
CAR <input type="checkbox"/> Reg. No. _____	Douglas <input type="checkbox"/> Other resort _____	
Make _____	If you have a particular price range in mind, please state per day £ _____	
RAIL <input type="checkbox"/> Depart From _____	No of rooms: single _____ twin _____	
Station _____	double _____ family _____	
Date of arrival in Isle of Man _____	No of adults male _____ female _____	
Date of departure from Isle of Man _____	No of children _____ ages _____	
Send to:	I enclose a deposit of £10 per person (deducted from final account). <input type="checkbox"/>	
<b>Sea Beds, Sealink, Sea Terminal, Douglas, Isle of Man. Telephone: 0624 24249</b>	Payable to SEA BEDS. Total Deposit £ <input type="text"/>	
	Signed: _____	
	Date: _____	

## Daystretcher/Daycruise Booking Form

I wish to book for a Daystretcher/Daycruise* departing from Heysham on _____	Name _____
(Please indicate alternative date of travel) _____	Address _____
<b>DAYSTRETCHER/DAYCRUISE TICKETS</b>	Tel No: _____
Please issue <input type="checkbox"/> Adult ticket(s) 18 years and over £ _____	I have read the Conditions set out in this brochure and agree to be bound by them
<input type="checkbox"/> Juvenile ticket(s) 14 years to 17 years £ _____	Signature _____
<input type="checkbox"/> Child ticket(s) 5 years to 13 years £ _____	Date _____
ENCLOSED CHEQUE/POSTAL ORDER NO. _____	<i>*Delete as necessary</i>
(Payable to Sealink and crossed)	
FOR TOTAL COST	
Please debit my <b>PAYMENT BY ACCESS/BARCLAYCARD</b>	
Please enter your card number below.	
 <input type="text"/>	
 <input type="text"/>	
PLEASE NOTE: Payment by Access or Barclaycard is only acceptable when booking direct with Sealink UK Ltd, The Harbour, Heysham. If you enter your credit card number the full amount will be charged against your account on confirmation of the booking.	

**BOOK THROUGH**

**PICKFORDS**  
 TRAVEL SERVICE  
 109, WOODBRIDGE RD,  
 GUILDFORD, SURREY.  
 Telephone 0403 729978  
 ABTA Code 48654