

CONTEMPORARY

IRISH PAINTING

EXHIBITION OF



ORGANIZED BY THE

COMMITTEE OF IRELAND

CULTURAL RELATIONS

NORTH AMERICA
1950

CONTEMPORARY
IRISH PAINTING

daṡaireaṡt na linne seo
in éirinn

TAISPEÁNTAS
A BAILÍOD FÉ CÚRAM
CÓISTE COMHNAÓMA CULTÚRA
NA hÉIREANN
AIMEIRIOCA ÉUAIÓ
1950

Arna éir i gcló don Cóirce
Fé Comhartha na dCúirí gComneal
Baile Átha Cliath, Éire

CONTEMPORARY
IRISH PAINTING

An Exhibition
organised by the
Cultural Relations Committee
of Ireland
North America
1950

Printed for the Committee
At the Sign of the Three Candles, Fleet Street
Dublin, Ireland

THE EXHIBITION WILL BE SHOWN IN THE
FOLLOWING CENTRES:

Providence, R.I., U.S.A.
in the Rhode Island School of Design Museum
under the auspices of the Alfred M. Williams Memorial
16TH MARCH TO 9TH APRIL

Boston, Mass., U.S.A.
in Symphony Hall
under the auspices of the Eire Society of Boston
MAY

Ottawa, Canada, in the Canadian National Gallery
JUNE

The cover design is by Raymond McGrath and is based on
Edward Smyth's keystone of the River Liffey, one of the
riverine sculptures of 1787 on the Custom House, Dublin

CULTURAL RELATIONS COMMITTEE OF IRELAND

*Appointed by the Minister for External Affairs in
January, 1949, to advise him on the development
of cultural relations with other countries*

Chairman

The Hon. Mr. Justice George Cavan Duffy

Vice-Chairman

Senator Michael Hayes, M.A.

Professor Seamus Delargy, M.A.

Richard Hayes, L.R.C.S.I., L.R.C.P.I., D.LITT.

Senator Patrick McCartan, M.D.

Eileen MacCarvill, M.A.

John MacDonagh

Roger McHugh, M.A., PH.D.

Senator E. A. McGuire

Professor T. W. Moody, F.T.C.D.

Frank Hugh O'Donnell

Liam O Laoghaire

The O'Rahilly, Barrister-at-Law

Michael Scott, M.R.I.A.I.

INTRODUCTION

POETRY alone of the fine arts, with the lesser art of the folk story, survived the centuries of alien rule in Ireland. They flourished in the protective colouring of the native tongue. But the visual arts, speaking a universal language, suffered a complete blackout in Ireland from the fifteenth century. Painting in the modern sense, then only in its infancy on the European continent, had no existence here save by importation until after 1700.

It is only in the last hundred years that we can truly speak of Irish painting at all. The present exhibition is made up of work of this century—mainly of the last decade. It is frankly a cross-section exhibition. We believe that in recent years painting in Ireland has rapidly progressed to a point where our artists may no longer be dismissed as provincial—as they might have been a generation ago. Many of the painters in this exhibition are still clarifying themselves in diverse streams—so it may well be that the exhibition as a whole fails to express a single or distinct character. Where a vigorous and adventurous spirit *is* expressed it is, we feel, the native personality but recently liberated.

The Irish literary renaissance of the beginning of the century ran parallel with and in great measure made part of the movement of political liberation. A few painters, mentioned later, collaborated in this sudden outburst of intellectual and artistic activity but the writers, W. B. Yeats, A.E., James Joyce, Synge, O'Casey and the rest occupied more conspicuously the public attention. In Ireland now, in very different conditions, there is something of the same buzz of talk about contemporary painters as accompanied the early work of those writers.

During the war Ireland, in the arts as in food and fuel, was thrown back upon herself. What, then, were her artistic resources at the outbreak of war? A tradition, unforgotten through seven broken centuries, of a creative capacity that starred Ireland and Western Europe with unsurpassed work in the illumination of manuscripts and in fine work in stone and metal; an Academy (founded in 1823) without any tradition

at all, but which at least made provision for an annual exhibition where commissioned portraits and a quantity of unadventurous landscapes were shown, and one group of younger artists in touch with the *Ecole de Paris* who were determined to assert their position. There was also one painter of genius, Jack B. Yeats—unfortunately not represented in the present exhibition—whose work had arrived at its maturity and falls into no category.

The Royal Hibernian Academy, like most academies of art, except by reaction has played little effective part in the movement of art in recent years. It is true it includes painters of distinction; Mr. Jack B. Yeats is, for example, a member as are many others in the present exhibition. It is not an academy in the true sense but rather a society of artists with some official recognition. It has neither definite direction nor a painting school. Its bent is towards a conventional naturalism but this is redeemed, not merely by Mr. Yeats's annual entries, but by the canvases of Mr. Leech and younger academicians like John Keating, Maurice MacGonigal, Hennessy, Salkeld and others in this exhibition.

William Orpen had many pupils at the Dublin School of Art before he finally left Ireland after the first world war. Amongst them Sleator, Kathleen Fox, Beatrice Glenavy, Margaret Clarke, Tuohy, Keating and others are here. Patrick Tuohy was perhaps the most promising and his early death in New York, where much of his work still is, robbed Ireland of a painter whose figure-work showed early a Cézanne-like solidity and forcefulness unusual in his generation.

Keating is a figure painter who has added to his native vivacity something of his master's bravura and something of Zuloaga's gaiety. Like Synge in the theatre, or the landscape painter Paul Henry, he turned early to the west of Ireland and found in the life of the population of Galway and the Aran Islands many subjects for his witty and shrewd observation. His decorative capacity, where his real strength lies, has been insufficiently exercised but showed itself to advantage in a great mural he painted for our Pavilion at the New York World's Fair in 1939, where it deservedly won a special award.

When one recites the names of Irish writers, W. B. Yeats, Synge, Shaw and Joyce, one safely assumes their world wide reputation. An equal position with equal security is assured for Jack B. Yeats, though it is only

in recent years that his fame has passed beyond the shores of Ireland. Yeats has all his life painted Ireland. The major part of his work can be said to contain scenes from the life of her people. But the significance in his work lies in the varying point of view, be it detached, reflective or nostalgic.

Beyond all aesthetic considerations he has used his vision to make us aware of our inherent characteristics, our particular psychological nature and the richness of our life beneath the surface as distinct from any other—a sort of James Joyce in the simpler, more gentle and instinctive language of the eye.

Yeats is in no sense a *chef d'école*, but the integrity of his character and work has made him an inspiration to the younger artists who grouped themselves about the late Mainie Jellett in the early war years. Their first stimulus was from outside. Dublin has had pupils of moderate cubism and its extreme abstract expression since the twenties but, while the keenness of the non-academic artists to link themselves with Europe was admirable, the theory of cubism was more alien to them than was admitted. It takes more than courage to gate-crash successfully a civilisation so organic and so disciplined as that of France. In the thirties Paris was being constantly revisited but it was doubtful at that time whether our artists had the strength of character to convert what they were humbly studying to their own purpose and how soon.

By the isolation of war what Irish artists have gained is time; time to develop themselves, time to discover at home fresh themes, an infinite variety of landscape and atmosphere unexploited in terms of contemporary pictorial directions. And so Grace Henry returning from the *Midi* and out of the shadow of Matisse found in Kerry and Clare a riot of exotic colour—in the mountains and in the patterned fields—but her work is now no more reminiscent of Matisse than Matisse is of Gauguin.

The acknowledged leader of the modern group was Mainie Jellett, our first and most stimulating example of the value of a French intellectual discipline combined with Irish temperament. Steeped in the theory and practice of an extreme form of non-figurative painting, she worked towards a welding of the most valuable in the abstract idea with certain elements she found worth revitalising in medieval Irish design and a sensitivity of colour inspired by the native landscape. Her palette echoed luminously

the richness of the physical face of the country—where she used the deep blues and greens of the Atlantic for an Irish Madonna or the sombre bog browns and purples for a *Deposition*. Mainie Jellett was our first serious religious painter. She was also practical. In 1943 she organised the now established group of independent painters who hold an annual exhibition under the title of Irish Living Art. The vital and progressive character of those independents is their only point in common. Notable amongst them are Norah McGuinness, Louis Le Brocquy, Rev. J. P. Hanlon, Evie Hone, Thurloe Conolly, Anne Yeats and Patrick Scott. With broad, bold strokes Norah McGuinness exercises her inventive power on the dark "fauve" country of her own Donegal and on the wide, windy streets of Georgian Dublin. She finds expressive colour and atmosphere where Cusack and Hanlon and Nano Reid exult in shapes and patterns. They are alive and free of secondhand phrases or tentative hesitations.

Le Brocquy's is a strange and tender imagination. He loves to picture people and things from the fluid rim of life, the nomadic tinkers of the west and their curious customs and the spectral evocative ruins of our deserted famine villages. With a slender, sensitive line he has long since in watercolour achieved perfection in one particular direction. In oil, as in his *Condemned Man*, he is now asserting as clear-cut a personality in what for him is the rarer medium.

Similarly the younger men, Conolly and Scott, cannot be thought of as resembling their seniors' approach; they speak directly in the international idiom of the present, while Anne Yeats, with a fresh expressive wit and fantasy, carries into the third generation a proud name in Irish art and literature.

In the field of stained glass Ireland had already attained pre-eminence before the war. Two flourishing studios existed in Dublin, one founded by Harry Clarke, himself distinguished for a stylised composition and byzantine brilliance of colour, the other co-operative workshop known as *An Túr Gloine* (the Tower of Glass), work of whose senior artist Michael Healy may be seen in the Sacred Heart Convent, Boston, the Church of St. Vincent Ferrar, N.Y.C. and elsewhere in the U.S.A. Evie Hone originally worked under Healy. She was trained in abstract design together with Mainie Jellett in France and has since turned almost

exclusively to glass. A large non-figurative window exhibited in the Irish Pavilion at the World's Fair of 1939 drew marked attention for its extraordinarily rhythmic colour patterns uncommon in this medium. Since then she has been more influenced by Gothic glass and by the strong, sturdy figures she finds in medieval Irish stone carving. Relying most of all on these for inspiration she has, like Rouault in painting—and with whom she has more than this in common—remoulded them into a style brilliantly personal and contemporary. Acknowledged one of the great stained glass artists of Europe, Miss Hone is now engaged on a large memorial window for Eton College Chapel in England.

It only remains for us to thank our friends in the United States and Canada for their help in organising this first exhibition designed to show the people of North America some of the work of contemporary artists in Ireland.

ELIZABETH CURRAN

CATALOGUE

(Measurements relate to picture size)

- | | | |
|-------------------|---|----------|
| HARRY BARNARDO | | |
| 1 | <i>A Wicklow Path</i> Oil, 15½ × 19½ in. | \$60.00 |
| MOYRA BARRY | | |
| 2 | <i>Rhododendrons</i> Oil, 22½ × 26½ in. | \$120.00 |
| MURIEL BRANDT | | |
| 3 | <i>Day of the Fair</i> Tempera, 29½ × 24½ in. (Illustrated) | \$135.00 |
| LOUIS LE BROCCQUY | | |
| 4 | <i>Condemned Man</i> (1945) Oil, 35 × 27½ in. (Illustrated) | \$425.00 |
| MICHEÁL DE BURCA | | |
| 5 | <i>Portach, Co. Mhuigheo</i> Water-colour, 9½ × 13½ in. | \$70.00 |
| ROBERT BURKE | | |
| 6 | <i>In the Park</i> Oil, 10½ × 14½ in. | \$30.00 |
| GEORGE CAMPBELL | | |
| 7 | <i>Irish Coast</i> Oil, 24½ × 29½ in. | \$155.00 |

| | | |
|---------------------|---|----------|
| 8 | <i>Flower-seller Family</i> Oil, 24½ × 29½ in. | \$155.00 |
| HARRY CLARKE | | |
| 9 | <i>Judas</i> Panel in Stained Glass, 49 × 13½ in. Lent by Mrs. Harry Clarke | |
| MARGARET CLARKE | | |
| 10 | <i>The Gael</i> Oil, 21 × 19 in. | \$215.00 |
| GEORGE COLLIE | | |
| 11 | <i>At the Curragh Races</i> Oil, 29½ × 24½ in. | \$280.00 |
| PATRICK COLLINS | | |
| 12 | <i>The Green Road</i> Oil, 17 × 22 in. | \$115.00 |
| THURLOE CONOLLY | | |
| 13 | <i>Harvest under a Sickle Moon</i> Oil, 36 × 27 in. | \$145.00 |
| 14 | <i>Painting III</i> Oil, 20 × 26 in. | \$85.00 |
| SYLVIA COOKE-COLLIS | | |
| 15 | <i>Castletownroche Fair</i> Oil, 19 × 25 in. (Illustrated) | \$75.00 |
| SRALIA COWAN | | |
| 16 | <i>Dúirt sé dairt sé (Gossips)</i> Oil, 9½ × 13½ in. | \$90.00 |

| | | |
|-------------------------|--|----------|
| RALPH CUSACK | | |
| 17 | <i>Exit from a Provincial Town (Ratbdrum, Co. Wicklow)</i> Oil, 22 × 27½ in. | \$90.00 |
| PHOEBE DONOVAN | | |
| 18 | <i>Primroses</i> Oil, 14 × 18½ in. | \$40.00 |
| VERE A. DE VERE DUDGEON | | |
| 19 | <i>Setting design for Abbey Theatre ("All Souls' Night")</i> Water-colour, 10½ × 16 in. | \$45.00 |
| FRANCIS DUNNE | | |
| 20 | <i>Beside Anna Livia</i> Oil, 11½ × 15½ in. | \$35.00 |
| HERTHA PHYLLIS EASON | | |
| 21 | <i>Mount Pleasant Avenue</i> Oil, 19½ × 23 in. | \$75.00 |
| KATHLEEN FOX | | |
| 22 | <i>Snow in the Fog at Milltown, Co. Dublin</i> Oil, 23½ × 19½ in. | \$145.00 |
| ROWEL BOYD FRIERS | | |
| 23 | <i>The Haunted House</i> Oil, 17 × 21½ in. | \$75.00 |
| R. BRIGID GANLY | | |
| 24 | <i>Tulips and Others</i> Oil, 29½ × 24½ in. | \$165.00 |
| BEATRICE GLENNAVY | | |
| 25 | <i>Pink Feathers</i> Oil, 20½ × 17½ in. | \$60.00 |

| | | |
|----|--|----------|
| 26 | PATRICIA GRIFFITH <i>Old Head Yard, Co. Mayo</i> Water-colour, 14 × 17 in. | \$45.00 |
| 27 | LETITIA HAMILTON <i>Rain at Glengariff</i> Oil, 20 × 23½ in. | \$140.00 |
| 28 | REV. JACK P. HANLON <i>If Winter Comes—</i> Oil, 24 × 19½ in. | \$100.00 |
| 29 | <i>Monastic Settlement, Ardmore</i> Oil, 13½ × 18 in. | \$60.00 |
| 30 | ERNEST HAYES <i>A Road in May</i> Oil, 17½ × 23½ in. | \$90.00 |
| 31 | PHYLLIS HAYWARD <i>Rooftops, Dublin</i> Ink and Water, 18½ × 14½ in. | \$40.00 |
| 32 | PATRICK HENNESSY <i>De Profundis</i> Oil, 49½ × 23 in. (Illustrated) | \$475.00 |
| 33 | GRACE HENRY <i>The Bend of the River (Barrow, Co. Carlow)</i> Oil, 19½ × 23½ in. | \$80.00 |
| 34 | OLIVE HENRY <i>Leaf Shapes</i> Oil, 13½ × 17½ in. | \$30.00 |

| | | |
|----|--|------------|
| 35 | PAUL HENRY <i>Reflections, Connemara</i> Oil, 23 × 29 in. (Illustrated) | \$1,015.00 |
| 36 | <i>Evening, Killarney</i> Oil, 19½ × 23½ in. | \$705.00 |
| 37 | EVIE HONE <i>The Betrayal</i> Trefoil in Stained Glass, 24 × 18 in. (Illustrated) | \$255.00 |
| 38 | <i>St. Anne</i> Panel in Stained Glass, 17 × 9½ in. Lent by the Dawson Gallery, Dublin | |
| 39 | WILLIAM HORSBURGH-PORTER <i>The Meadow</i> Oil, 24 × 28 in. | \$145.00 |
| 40 | JOAN JAMESON <i>Castellmare</i> Oil, 24½ × 29½ in. (Illustrated) | \$155.00 |
| 41 | <i>Killiney</i> Oil, 24½ × 29½ in. | \$155.00 |
| 42 | MAINIE JELLETT <i>Study for Composition</i> Gouache, 10 × 7 in. | \$40.00 |
| 43 | <i>Deposition</i> Oil, 47 × 27 in. Lent by the Dublin Municipal Art Gallery | |

EUGENE JUDGE
44 *Winter Morning* \$50.00
Water-colour, 7½ × 12 in.

JOHN KEATING
45 *The Men of the West*
Oil, 38 × 48½ in.
Lent by the Dublin Municipal Art Gallery

46 *Sunset in Fog* \$340.00
Oil, 20 × 27½ in.

FRANCES KELLY
47 *Pietà*
Oil, 38 × 30 in.
Lent by the Dublin Municipal Art Gallery

48 *Home-work* \$500.00
Oil, 42½ × 32 in.
(Illustrated)

HARRY KERNOFF
49 *Davy's from the Bailey, Dublin* \$240.00
Oil, 29 × 23 in.
(Illustrated)

HARRIET KIRKWOOD
50 *View of Howth and Ireland's Eye* \$145.00
Oil, 17½ × 23½ in.

CHARLES LAMB
51 *A Connemara Woman* \$425.00
Oil, 23½ × 19½ in.

WILLIAM J. LEECH
52 *Un Matin*
Oil, 43½ × 49½ in.
Lent by the Dublin Municipal Art Gallery

53 *Up the Garden Path* \$180.00
Oil, 21½ × 14½ in.
(Illustrated)

PATRICK LEONARD
54 *Midday—Landscape at Rush, Co. Dublin* \$120.00
Oil, 33 × 35½ in.

GLADYS MACCABE
55 *Still Life* \$50.00
Oil, 12½ × 16½ in.
(Illustrated)

MAX MACCABE
56 *Fishes* \$35.00
Oil, 12½ × 16½ in.

JOHN F. MACCARTHY
57 *Low Tide, Malabide* \$50.00
Water-colour, 10½ × 15 in.

MAURICE MACGONIGAL
58 *A Summer's Day* \$365.00
Oil, 27½ × 35½ in.

RAYMOND MCGRATH
59 *The Black Fort, Aranmore* \$75.00
Water-colour, 16½ × 23 in.
(Illustrated)

| | | |
|---------------------|--|----------|
| NORAH MCGUINNESS | | |
| 60 | <i>Kinsale</i> Oil, 24½ × 29½ in. | \$160.00 |
| 61 | <i>Bachelor's Walk, Dublin</i> Oil, 32 × 41½ in. (Illustrated) | \$425.00 |
| FRANK MCKELVEY | | |
| 62 | <i>Tramore Bay, Coast of Donegal</i> Oil, 27½ × 35½ in. (Illustrated) | \$450.00 |
| COLIN MIDDLETON | | |
| 63 | <i>Girl in Stripes</i> Oil, 23½ × 19½ in. | \$150.00 |
| 64 | <i>The Bay, Ardglass</i> Oil, 19½ × 24 in. | \$135.00 |
| TOM NISBET | | |
| 65 | <i>Morning on the River</i> Water-colour, 10½ × 14½ in. | \$25.00 |
| FLORENCE V. O'BRIEN | | |
| 66 | <i>Building Walls in North Clare</i> Lino-cut, 7½ × 10 in. (Illustrated) | \$20.00 |
| ROISIN O'DOHERTY | | |
| 67 | <i>At Peace with the World</i> Oil, 29½ × 21½ in. | \$185.00 |
| 68 | <i>Lucky Cat</i> Oil, 22 × 17½ in. | \$115.00 |

| | | |
|----------------------|--|----------|
| FREDERICK G. O'DWYER | | |
| 69 | <i>Men of the West</i> Water-colour, 11 × 13 in. | \$45.00 |
| DANIEL O'NEILL | | |
| 70 | <i>Near Culdaff, Co. Donegal</i> Oil, 19½ × 24 in. | \$120.00 |
| 71 | <i>Artist and Models</i> Oil, 18½ × 23½ in. (Illustrated) | \$145.00 |
| BEA ORPEN | | |
| 72 | <i>Ashtree in Dublin</i> Water-colour, 9 × 13½ in. | \$30.00 |
| FERGUS O'RYAN | | |
| 73 | <i>The Black Church, Dublin</i> Oil, 15½ × 20½ in. (Illustrated) | \$120.00 |
| SEAN O'SULLIVAN | | |
| 74 | <i>Painting of a Woman</i> Oil, 29½ × 24½ in. | \$565.00 |
| LIAM PROUD | | |
| 75 | <i>Daffodils in the Annexe</i> Oil, 14 × 10 in. | \$45.00 |
| NANO REID | | |
| 76 | <i>Portrait of a Young Man</i> Oil, 24 × 19½ in. | \$150.00 |
| 77 | <i>Dark Girl</i> Oil, 17½ × 13½ in. | \$150.00 |

HILDA ROBERTS
78 *Group in a Waiting Room* \$100.00
Oil, 10½ × 10½ in.

CECIL FFRENCH SALKELD
79 *Annunciation* \$165.00
Oil, 29½ × 24½ in.
(Illustrated)

CAROLINE SCALLY
80 *The Deserted Farm* \$100.00
Oil, 15½ × 19½ in.

PATRICK SCOTT
81 *A Wet Day* \$215.00
Oil, 39 × 29 in.

JAMES SLEATOR
82 *Portrait of Sir William Orpen*
Oil, 29½ × 24½ in.
Lent by the Dublin Municipal Art Gallery

CYNTHIA SMITH
83 *Sal* \$50.00
Monotype, 16 × 12 in.

84 *Barn on Fire* \$30.00
Water-colour and varnish, 13½ × 17 in.

MARGARET STOKES
85 *Corpus Christi* \$25.00
Water-colour, 10 × 13½ in.

PATRICK TUOHY
86 *Portrait of James Stephens*
Oil, 45 × 35½ in.
Lent by the National Gallery of Ireland

DOREEN VANSTON
87 *Landscape, Costa Rica* \$70.00
Oil, 11½ × 15½ in.

GEORGE WALLACE
88 *Spring Evening, Bristol* \$55.00
Oil, 10½ × 14½ in.

ANNE BUTLER YEATS
89 *Caught and Captured* \$55.00
Oil, 19½ × 15½ in.



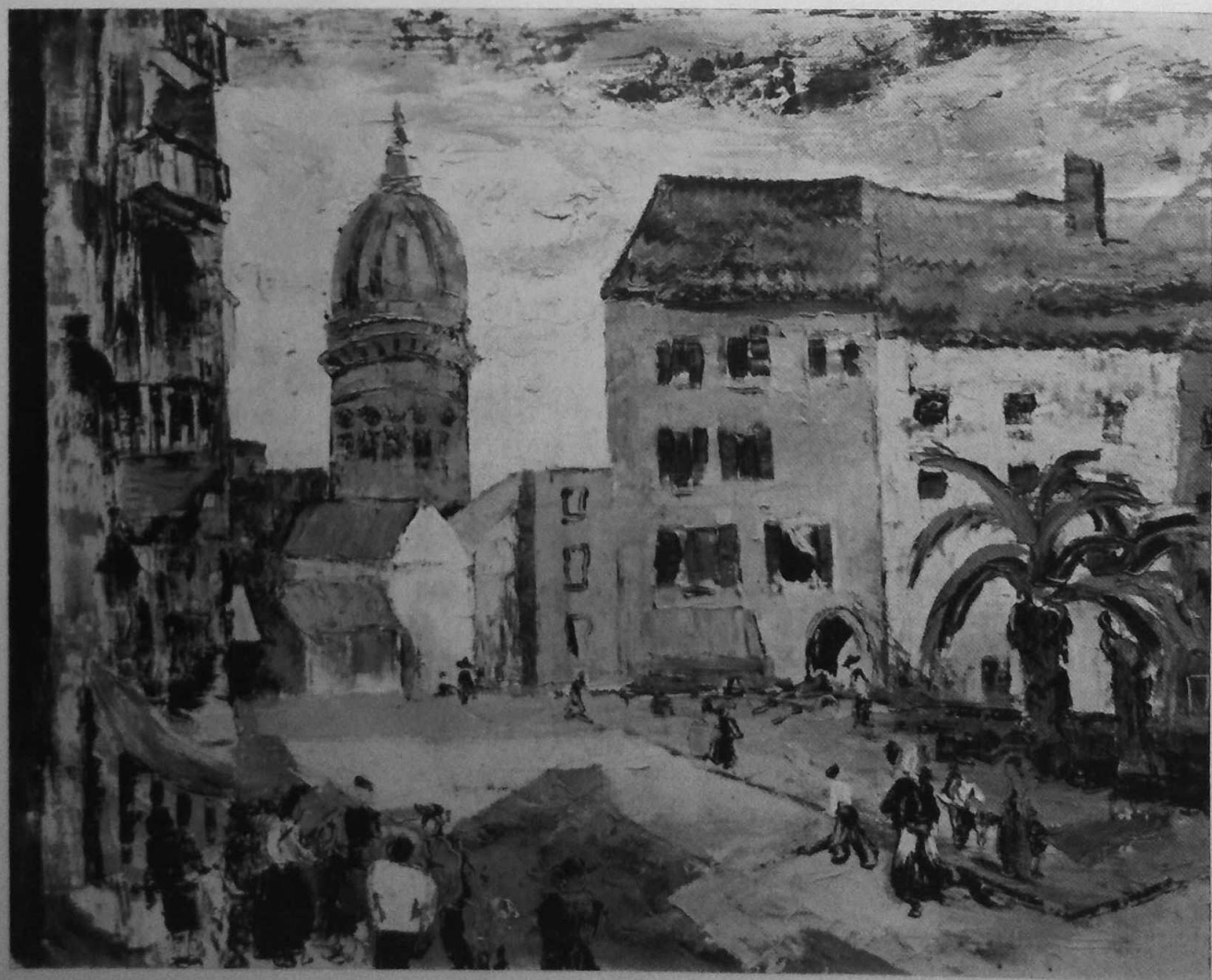
EVIE HONE

The Betrayal



SYLVIA COOKE/COLLIS

Castletownroche Fair



JOAN JAMESON

Castellemare



PATRICK HENNESSY

De Profundis



CECIL FRENCH SALKELD

Annunciation



LOUIS LE BROCQUY

Condemned Man (1945)



RAYMOND MCGRATH

The Black Fort, Aranmore



PAUL HENRY

Reflections, Connemara



FRANK MCKELVEY

Tramore Bay, Coast of Donegal



NORAH MCGUINNESS

Bachelor's Walk, Dublin



DANIEL O'NEILL

Artist and Models



HARRY KERNOFF

Davy's from the Bailey, Dublin



MURIEL BRANDT

Day of the Fair



FERGUS O'RYAN

The Black Church, Dublin



GLADYS MACCABE

Still Life



FLORENCE VERE O'BRIEN

Building Walls in North Clare



FRANCES KELLY

Home-work



WILLIAM J. LEECH

Up the Garden Path

THE ARTISTS

BARNARDO, HARRY, 5 *Belleville Avenue, Rathgar, Dublin*

Born Dublin, 1923. Began painting only last year under the guidance of George Campbell.

BARRY, MOYRA, 29 *Palmerston Road, Dublin*

Born Dublin, 1895. Studied Royal Hibernian Academy School and Slade School, London. Regular exhibitor at R.H.A. Has also exhibited in group shows in London and Amsterdam and has had several one-man shows in Dublin.

Represented in public galleries in Dublin, Belfast and Limerick.

BRANDT, MURIEL, A.R.H.A., A.R.C.A., "*Stonecrop*," *Strand Road, Sutton, Co. Dublin*

Born Belfast, 1909. Studied Belfast School of Art and Royal College of Art, London. Exhibits regularly at annual exhibitions in Dublin. Work purchased by Irish Government and Haverty Trust.

Represented in Kilkenny Art Gallery. Paints murals, portraits and landscapes. Designer of stamp for inauguration Republic of Ireland.

LE BROCCQUY, LOUIS, A.R.H.A., 70 *Clarewood Court, Crawford Street, London*

Born Dublin, 1916. Self-taught.

Regular exhibitor at annual exhibitions in Dublin, Arts Council of Great Britain, British Council (London Group), Artists of Fame and Promise, London, Salon de Mai, Paris. In past three years has shown in Paris, Brussels, Ghent, Warsaw, Athens, Rome, Amsterdam, Prague, Frankfurt; 21 paintings exhibited at A.A.A. Galleries, New York, March, 1947. Represented in Dublin and Belfast Municipal Galleries; Graves Art Gallery, Sheffield; Contemporary Art Society; Abbot International Collection, New York. Teaches painting at the Central School of Arts and Crafts, London. Work commissioned for Festival of Britain, 1951.

DE BURCA, MICHEÁL, R.H.A., A.N.C.A., *National College of Art, Kildare Street, Dublin*

Born Castlebar, Co. Mayo, 1914. Studied National College of Art and on the Continent. Exhibits regularly at Royal Hibernian Academy. Has also exhibited in Holland and has had several one-man shows in Ireland. Represented in Dublin, Belfast and Cork Municipal Galleries. Director of the National College of Art, Dublin.

ROBERT BURKE, "Lochee," *Summerville Avenue, Waterford*

Born Dundee, 1909. Received art education in Scotland, London and Paris. Illustrations for leading London periodicals 1930-36. Regular exhibitor at annual exhibitions in Dublin. Has also shown in Royal Academy, London; Royal Scottish Academy, Edinburgh and Paris Salon. Represented in public galleries in Limerick and Waterford. Headmaster of School of Art, Waterford.

CAMPBELL, GEORGE, 99a *Seafield Road, Clontarf, Dublin*

Born Arklow, Co. Wicklow, 1917. Self-taught. Regular exhibitor at annual exhibitions in Dublin. Has also shown at Beverley Hills, U.S.A.; Artists of Fame and Promise, London and in Irish Exhibitions in New York, Amsterdam, London, etc. One-man shows held in Dublin, Belfast and Limerick.

Represented in Dublin and Belfast Municipal Galleries. Work purchased by Haverly Trust, Abbott Laboratories Collection, Chicago and C.E.M.A.

CLARKE, HARRY, R.H.A. (1889-1931)

Born Dublin, 1889. Studied Dublin Metropolitan School of Art and College of Art, South Kensington, London. Won many distinctions for stained glass work.

Represented by drawings in Dublin Municipal Gallery and by stained glass windows at Bayonne, N.J., Brisbane, Australia, many cities in Great Britain and many churches in Ireland including Lough Derg Basilica and Honan Chapel, University College, Cork.

Commissioned by Irish Government to design and execute stained glass window for League of Nations building, Geneva. Illustrated many books of fairy tales and poems. Died in Switzerland, 1931.

CLARKE, MARGARET, R.H.A., 48 *North Circular Road, Dublin*

Born Co. Down. Studied School of Art, Dublin, under Sir William Orpen. Exhibits regularly at annual exhibitions in Dublin. Work has been shown in international exhibitions in London, Paris, New York and Chicago.

Represented in Municipal Galleries Dublin, Cork and Limerick. At present working at genre and portrait painting. Member of Irish Exhibition of Living Art Committee.

COLLIE, GEORGE, R.H.A., 23 *Oaklands Terrace, Terenure, Dublin*

Born Carrickmacross, Co. Monaghan, 1904. Studied Metropolitan School of Art, Dublin, Royal College of Arts, London and at Art Schools in Paris. Won several scholarships. Regular exhibitor at annual exhibitions in Dublin. Has also exhibited in London, Wales, Scotland and Los Angeles.

Represented in public collections Belfast and Haverly Trust.

COLLINS, PATRICK, *The Turret, Howth Demesne, Howth, Co. Dublin*

Born Dromore West, Co. Sligo, 1911. Studied National College of Art, Dublin, and under George Collie, but mostly self-taught. Does some art criticism.

CONOLLY, THURLOE, *Ballyman Lane, Ballyman, Bray, Co. Wicklow*

Born Cork, 1918. No orthodox art education. Exhibits regularly at Irish Exhibition of Living Art. Has also shown in Amsterdam, Rotterdam, London, New York, Chicago, Beverley Hills. Two one-man shows held in Dublin.

Painting purchased by Haverly Trust. Member of Irish Exhibition of Living Art Committee.

COOKE-COLLIS, SYLVIA, *Ballymacmoy House, Killavullen, Co. Cork*

Born Co. Cork, 1900. Studied Cork School of Art and, for many years, with Mainie Jellett. Regular exhibitor at annual exhibitions in Dublin and Munster Fine Arts Club, Cork. Has also shown in Belfast and London.

Work purchased by Haverly Trust.

COWAN, ISRALIA S., 41 *Kenilworth Square, Dublin*

Born Dublin, 1927. Studied National College of Art, Dublin. Has exhibited in Royal Hibernian Academy and Oireachtas Exhibitions.

CUSACK, RALPH, "Uplands," *Roundwood, Co. Wicklow*

Born Portmarnock, Co. Dublin, 1912. Self-taught. Studied on his own in France, Italy and Germany. Exhibits regularly at annual exhibitions in Dublin. Has also shown in London, Paris, Nice, and Monte Carlo. Member of Irish Exhibition of Living Art Committee.

DONOVAN, PHOEBE, *Summerfield, Dalkey, Co. Dublin*

Born Camolin, Co. Wexford, 1902. Studied Royal Hibernian Academy School, Dublin Metropolitan School of Art and in Rome and London. Regular exhibitor at annual exhibitions Dublin, Waterford and Munster Fine Arts Club. Has had one-man show in Dublin. Work also shown in Pastel Society, London, and Walker Art Gallery, Liverpool.

DUDGEON, VERA A. DE VERE, 30 *Palmerston Road, Dublin*

Born Dublin, 1928. Studied National College of Art, Dublin and under Mainie Jellett. Exhibits regularly in Irish Exhibition of Living Art. Scenic designer, Abbey Theatre.

DUNNE, FRANCIS, 35 *Lower Sean MacDermott Street, Dublin*

Born Dublin, 1918. Studied National College of Art, Dublin. Paints Dublin and Dubliners.

EASON, HERTHA PHYLLIS, 3 *Herbert Street, Dublin*

Born Dublin, 1896. Attended life classes at National College of Art, Dublin, but chiefly self-taught. Exhibits regularly in annual exhibitions in Dublin. One-man show, 1946.

FOX, KATHLEEN, *Brookfield, Milltown, Co. Dublin*

Born Dublin. Studied with Sir William Orpen at School of Art, Dublin, and in London and Paris. Won numerous prizes for drawing, painting and enamelling. Exhibits regularly in annual exhibitions in Dublin. Has also shown in Royal Academy, National Portrait Society and New English Art Club, London, and in Paris Salon. Represented in Dublin, Cork, Limerick, Newry, Waterford and Kilkenny Municipal Galleries.

FRIERS, ROWEL BOYD, "Keelung," *Ballybun, Dundonald, Co. Down*

Born Belfast, 1920. Attended Belfast College of Art. Exhibits regularly at Royal Hibernian Academy and Ulster Academy of Arts. Represented in Belfast Municipal Gallery and C.E.M.A. collection. Works purchased by Haverly Trust. Staff artist *Dublin Opinion*. Illustrations for *Punch* and other leading English journals.

GANLY, R. BRIGID, R.H.A., 9 *Vergemount, Clonskeagh, Dublin*

Born Dublin, 1909. Studied National College of Art and Royal Hibernian Academy School, Dublin. Studied modelling under Oliver Sheppard and won many prizes for sculpture. Also studied in Rome and Florence. Regular exhibitor Royal Hibernian Academy. Has also shown in other exhibitions in Dublin and in Waterford Art Society. Represented in Dublin and Waterford Municipal Galleries. Work purchased by Haverly Trust. Murals executed for Church of All Saints, Blackrock, Co. Dublin and elsewhere.

GLENNAVY, THE LADY, R.H.A., *Rockbrook House, Rathfarnham, Co. Dublin*

Born Dublin, 1883. Studied Metropolitan School of Art, Dublin. Exhibits regularly in Royal Hibernian Academy, Royal Academy, Royal Scottish Academy. Has also shown in Leicester Galleries, London, and all over Ireland.

Represented in Dublin Municipal Gallery, in Drogheda, Limerick, etc., and by many stained glass windows abroad. Began work as a modeller and designed stained glass in An Túr Gloine Studio for seven years. Later took up painting in oils.

GRIFFITH, PATRICIA (PAT), *Belcamp, Rabeny, Co. Dublin*

Born Dublin, 1913. Studied Royal Hibernian Academy School and Slade School, London. Exhibits regularly in annual exhibitions, Dublin. Picture purchased by Haverty Trust. Has painted murals and stage scenery.

HAMILTON, LETITIA, R.H.A., *Woodville House, Lucan, Co. Dublin*

Born Dunboyne, Co. Meath, 1878. Studied under Sir William Orpen in Dublin Metropolitan School of Art, under Frank Brangwyn in Belgium and in London. Regular exhibitor at annual exhibitions in Dublin. Has also exhibited in Royal Academy, Leicester and Kensington Art Galleries, London, Paris Salon and Scottish Society of Women Artists, Edinburgh.

Represented in Dublin and other Municipal Galleries in Ireland. Won bronze medal, Olympic Games Art Section, London, 1948.

HANLON, REV. JACK P., *Delgany, Co. Wicklow*

Born Dublin, 1913. Studied in Belgium and with André L'hôte, Paris. Regular exhibitor at Irish Exhibition of Living Art and Wildenstein, London. Has also shown with Dublin Painters Group and in Leicester Galleries, Gimpel Frères and Olympic Games Art Section, London and at World's Fair, New York, 1939. Member of Irish Exhibition of Living Art Committee.

HAYES, ERNEST, R.H.A., *Studio, 64 Dawson Street, Dublin*

Born Dublin, 1914. Regular exhibitor at annual exhibitions in Dublin. Has also exhibited at United Artists Exhibition, Burlington House, London and Munster Fine Arts Club, Cork.

Professional portrait painter. Has made special study of marine painting.

HAYWARD, PHYLLIS M., *18 Upper Fitzwilliam Street, Dublin*

Born Portsmouth, 1907. Studied Portsmouth School of Art, and Central School, London. Ten years' individual study Dublin. Regular exhibitor at Irish Exhibition of Living Art and Dublin Painters Group.

HENNESSY, PATRICK, R.H.A., *28 Herbert Place, Dublin*

Born Cork, 1915. Studied Dundee College of Art and in Edinburgh, London, Paris and Rome. Regular exhibitor at annual exhibitions in Dublin. Annual one-man show in Dublin. Has also shown at Royal Scottish Academy, Leicester Galleries, London, Munster Fine Arts Club, Cork and in Irish exhibitions in U.S.A. and Holland.

Represented in Dublin, Cork, Kilkenny and Limerick Municipal Galleries.

HENRY, GRACE, H.R.H.A., *c/o. Dawson Gallery, Dawson Street, Dublin*

Born Aberdeenshire. Studied Blanc Garrins Academy, Brussels; Delecluse Academy and Academy André L'hôte, Paris; and with L. Garrick and François Quelvéc. Regular exhibitor in annual exhibitions in Dublin. Has also shown at Paris Salon and in London, New York, Montreal, Chile and Holland.

Represented in Municipal Galleries Dublin, Belfast, Cork, Limerick and in other public galleries.

HENRY, OLIVE, *Glen Lodge, Belmont, Belfast*

Born Belfast. Studied Belfast College of Art. Regular exhibitor in annual exhibitions Dublin and Ulster Academy of Arts. One-man show held in Belfast. Has also shown in Society of Women Artists, United Society of Artists, Royal Society of British Artists and C.E.M.A. exhibitions.

Represented in public collections Belfast. Also works in stained glass.

HENRY, PAUL, R.H.A., *Carrigoona Cottage, Kilmacanogue, Co. Wicklow*

Born Belfast, 1878. Studied in Paris under Jean Paul Laurens and James McNeill Whistler. Regular exhibitor at Royal Hibernian Academy and various group exhibitions in London. Has shown in exhibitions of Irish paintings in U.S.A., London and on the Continent. Regular one-man shows in Dublin, London, Oxford, New York, Boston, Canada and Australia.

Represented in the French National Collection by "A Village in the West of Ireland," in the Municipal Gallery, Dublin, and in Art Galleries in Boston, Sheffield, Belfast, Cork and others. Has designed publicity posters.

HONE, EVIE, *The Dower House, Marley, Rathfarnham, Co. Dublin*

Born Co. Dublin. Pupil of Walter Sickert and Bernard Meninsky in London and of Albert Gleizes and André L'hôte in Paris. Exhibits regularly in Irish Exhibition of Living Art. Work also shown in many London exhibitions and in Salon d'Automne, Sur-Indépendant, Abstract-Création, Indépendant, Paris.

Represented in the Tate Gallery, London. Stained glass window commissioned by Irish Government in 1939 for Irish Pavilion, New York World's Fair. Windows all over Ireland and in many churches in England. At present at work on large window for Eton College Chapel. Member of Irish Exhibition of Living Art Committee.

HORSBURGH-PORTER, WILLIAM, *Glenbest, Carrickmines, Co. Dublin*

Born Dalkey, Co. Dublin, 1905. Studied Metropolitan School of Art, Dublin, and Slade School, London, where he won many distinctions. Regular exhibitor at Royal Hibernian Academy and Royal Academy. Eight one-man shows in Dublin and one in London. Has also exhibited in New English Art Club, Paris Salon, Royal Scottish Academy and Royal Academy of Wales.

Represented in Waterford and Limerick Art Galleries. Collaborated with Stephen Bone in decoration of Piccadilly Tube Station.

JAMESON, JOAN, *Tourin, Cappoquin, Co. Waterford*

Born London, 1892. Studied Académie Juliens, Paris. Regular exhibitor in Irish Exhibition of Living Art and Dublin Painters Group. Two one-man shows in Leicester Galleries, London. Picture bought by Haverty Trust.

JELLETT, MAINIE (1897-1944)

Born Dublin, 1897. Studied at National College of Art, Dublin and at Westminster School of Art, London, under Walter Sickert. Pupil of André L'hôte and Albert Gleizes, Paris. Exhibited in Dublin, London and Paris (Indépendants, Salon d'Automne, Abstract-Créations) and in Munich. Represented in Dublin and Limerick Municipal Galleries. Designed murals for Irish Pavilion at Glasgow Exhibition, 1937.

JUDGE, EUGENE, *Kiltimagh, Co. Mayo*

Born Aghamore, Co. Mayo, 1910. Studied under André L'hôte and at Académie Chaumière, Paris. Exhibits regularly at annual exhibitions in Dublin.

KEATING, JOHN, P.R.H.A., *Ait an Chuaín, Rathfarnham, Co. Dublin*

Born Limerick, 1889. Studied Limerick and Dublin Schools of Art where he won several scholarships. Also studied in London under Sir William Orpen, at the Louvre and in the Metropolitan Museum, New York. Regular exhibitor in Royal Hibernian Academy, at the Royal Academy, Royal Society of Artists and other exhibitions in Great Britain, and in a world wide series of exhibitions organised by the Carnegie Trust.

Represented in public collections in Rome, Brussels, Buenos Aires, New York, Glasgow and Dublin. Awarded first prize for picture "Rás na nGaedhal" at World's Fair, New York, 1939.

Elected President of Royal Hibernian Academy, March, 1950. Professor of Painting, National College of Art, Dublin.

KELLY, FRANCES, *17 Leeson Park, Dublin*

Born Co. Louth. Studied National College of Art, Dublin, and for three years in Paris under Léopold Survage. Exhibits regularly in annual exhibitions in Dublin. Has had five one-man shows.

Represented in Dublin, Belfast, Cork and Galway Municipal Galleries. Executed murals for several public buildings.

KERNOFF, HARRY, R.H.A., *13 Stamer Street, Dublin*

Born London, 1900. Studied National College of Art, Dublin. Pupil of Harry Clarke in stained glass. Regular exhibitor Royal Hibernian Academy and has had fourteen one-man shows. Has also exhibited in Royal Academy, London, and in U.S.A., Holland, Paris and Moscow.

Represented in public collections Dublin, Belfast, Limerick, Waterford and Killarney. Picture purchased by Irish Government. Illustrations for books and periodicals. Book of woodcuts published.

KIRKWOOD, HARRIET, *Collinstown Park, Clondalkin, Co. Dublin*

Born Dublin, 1881. Studied Slade School, London, and under André L'hôte, Paris. Exhibits regularly Dublin Painters Group and in other annual exhibitions in Dublin.

Picture purchased by Haverly Trust.

LAMB, CHARLES, R.H.A., *Carraroe, Co. Galway*

Born Portadown, Co. Armagh, 1893. Studied Belfast and Dublin Schools of Art. Regular exhibitor at Royal Hibernian Academy, Munster Fine Arts Club, South Tipperary Art Society and Waterford Arts Club. Annual one-man shows in Dublin 1923-1942 and several in Belfast.

Represented in Dublin, Belfast, Cork, Limerick, Waterford and Clonmel Municipal Galleries. Since 1922 has painted exclusively the landscape and people of the West of Ireland. Runs Summer Art School at Carraroe.

LEECH, WILLIAM J., R.H.A., *20 Abbey Road, London*

Born Dublin, 1881. Studied at Dublin Metropolitan and Royal Hibernian Academy Schools of Art and at Académie Julien, Paris. Awarded several distinctions. Regular exhibitor Royal Hibernian Academy. Has also shown in Brussels, Venice, Paris, and at the Royal Academy, London, and many other exhibitions in England.

Represented in public collections in Ireland, England, U.S.A. and New Zealand. Bronze medal at Paris Salon, 1914. Has painted in Brittany, South of France, Tunis, London and Dublin.

LEONARD, PATRICK A.R.H.A., *Roseville, Rush, Co. Dublin*

Born Rush, Co. Dublin, 1918. Studied at Dublin School of Art. Regular exhibitor at annual exhibitions in Dublin. Two one-man shows in Dublin.

Represented in Dublin Municipal Gallery.

MACCABE, GLADYS, *10 Vauxhall Park, Belfast*

Born Randalstown, Co. Antrim, 1918. Studied sculpture and commercial art at Belfast School of Art. Oil painting self-taught. Regular exhibitor Dublin and Belfast. Has also shown at exhibitions of Artists' International

Association, Royal Scottish Academy, Artists of Fame and Promise, Society of Women Artists. Two one-man shows with husband in Dublin and London respectively.

Represented in public collections Belfast. Picture purchased by Haverly Trust.

MACCABE, MAX, *10 Vauxhall Park, Belfast*

Born Belfast, 1917. Studied drawing at Royal Belfast Academical Institution. Painting self-taught. Regular exhibitor Ulster Academy of Arts and Watercolour Society of Ireland. Has also shown in Leicester Galleries, London and with C.E.M.A. Two one-man shows with wife in Dublin and London respectively.

MACCARTHY, JOHN F. *13 Anglesea Street, Dublin*

Born Cork City, 1901. Studied Cork School of Art and National College of Art, Dublin. Regular exhibitor at annual exhibitions in Dublin and at Munster Fine Arts Club, Cork.

MACGONIGAL, MAURICE, R.H.A., *124 Rock Road, Booterstown, Co. Dublin*

Born Dublin, 1900. Studied painting at Dublin School of Art and in Holland and stained glass in Harry Clarke Studio. Awarded several distinctions. Regular exhibitor at annual exhibitions in Dublin. Has also shown in Belfast and in Irish exhibitions in Holland and London. One-man shows Dublin, Belfast, Cork, Limerick and Galway.

Represented Dublin, Belfast, Cork and Limerick Municipal Galleries. Assistant Professor of Painting and Drawing, National College of Art, Dublin.

MCCRATH, RAYMOND, B.A.R.C.H., A.R.H.A., *Monkstown House, Monkstown, Co. Dublin*

Born Sydney, Australia, 1903. Studied at art schools in Sydney and London. Regular exhibitor at annual exhibitions in Dublin. Has also shown in London, New York, Sydney, etc. Two one-man shows in Dublin.

Pen drawing and wood engraving illustrations. Author of various books on architecture. Chief Architect, Office of Public Works, Dublin.

MCGUINNESS, NORAH, 13 Fitzwilliam Square, Dublin

Born Derry. Studied Chelsea Polytechnic, London, and under André L'hôte, Paris. Regular exhibitor at Irish Exhibition of Living Art. Several one-man shows Dublin and London. Has also exhibited in New York and in Irish exhibitions in Holland. Has illustrated many books. Designs stage masks and scenery.

Represented in Victoria and Albert Museum Lithographic Exhibition 1949. President of Irish Exhibition of Living Art since 1944. Works purchased by Haverly Trust.

MCKELVEY, FRANK, R.H.A., Studio, 28 Howard Street, Belfast

Born Belfast, 1895. Studied College of Art, Belfast. Regular exhibitor Royal Hibernian Academy, Ulster Academy of Arts and Ulster Arts Club. Has also shown in New York, London and Glasgow.

Represented in Dublin, Belfast, Cork, Limerick and Waterford Municipal Galleries. Picture purchased by Haverly Trust.

MIDDLETON, COLIN, c/o. Victor Waddington Galleries, Dublin

Born Belfast, 1910. Studied Belfast and at Slade School, London. Regular exhibitor at annual exhibitions in Dublin. Has also shown in London, Amsterdam and New York.

NISBET, TOM, A.R.H.A., Grafton Gallery, 2 Harry Street, Dublin

Born Belfast, 1909. Studied Belfast School of Art and National College of Art, Dublin. Regular exhibitor in annual exhibitions in Dublin. Has also shown in Belfast and with C.E.M.A.

O'BRIEN, FLORENCE VERE, Ballyalla, Ennis, Co. Clare.

Born London, 1896. Studied at Dublin Municipal School of Art. Has exhibited in Waterford and Limerick and at Olympic Games Art Exhibition, London.

O'DOHERTY, ROISIN, "Brookline," 56 Terenure Road, Dublin

Born Derry City. Studied National College of Art, Dublin, Royal Hibernian Academy School and Winold Reiss Art School, New York. Exhibited for first time in 1949 at Irish Exhibition of Living Art.

O'DWYER, FREDERICK G., 6 Lady's Well Place, Cork

Born Cork City, 1911. Regular exhibitor in all Munster exhibitions. One-man show Cork. Has also exhibited in Dublin. Chairman, Cork Art Club. Art master in Cork Secondary College.

O'NEILL, DANIEL, 4 Hall Street, Conlig, Co. Down

Born Belfast, 1920. Self-taught. Regular exhibitor in annual exhibitions in Dublin. Has also exhibited in London, New York, Beverley Hills, California, Amsterdam, Paris and Brussels. Two one-man shows in Dublin.

Represented in Dublin Municipal Art Gallery and in Abbott Laboratories Collection, U.S.A. Pictures purchased by Haverly Trust.

ORPEN, BEA, The Blue School, Drogheda, Co. Louth

Born Carrickmines, Co. Dublin, 1913. Studied Royal Hibernian Academy School, Slade School, London and L.C.C. School of Printing and Engraving. Regular exhibitor in annual exhibitions in Dublin, Cork, Clonmel and Waterford.

Represented in Waterford, Kilkenny and Drogheda Municipal Galleries. Art teacher in schools in Drogheda.

O'RYAN, FERGUS, Avondale, Bird Avenue, Clonskeagh, Dublin

Born Limerick, 1911. Studied in National College of Art, Dublin, and in Munich and Paris. Regular exhibitor in annual exhibitions in Dublin. Has also shown in London, Amsterdam and Sydney.

Represented in Dublin, Cork, Limerick and Waterford Municipal Galleries. Wood engraving illustrations. Teacher of commercial art.

O'SULLIVAN, SEAN, R.H.A., *Studio, 6 St. Stephen's Green, Dublin*

Born Dublin, 1906. Studied Dublin Metropolitan School of Art and in London and Paris. Regular exhibitor in annual exhibitions in Dublin. Has also exhibited in Chicago, New York, Paris, London and Edinburgh. Represented in National Gallery of Ireland, Dublin Municipal Gallery, British Museum, Belfast and Limerick Municipal Galleries and Hull Art Gallery. Principally a portrait painter. Also does etching, dry-point, book illustration, murals, lithography and landscape. Designed several Irish postage stamps.

PROUD, LIAM, *Erewhon, Barnhill Road, Dalkey, Co. Dublin*

Born Dublin, 1920. Self-taught. Regular exhibitor at annual exhibitions in Dublin. One-man show Dublin Painters Group, 1950. Represented in Kilkenny Municipal Gallery.

REID, NANO, 1 *Fitzwilliam Square, Dublin*

Born Drogheda, 1910. Studied at National College of Art, Dublin, and in Art Schools in Paris and London. Regular exhibitor in Irish Exhibition of Living Art. Has also shown in London (Leicester Galleries and elsewhere). Frequent one-man shows in Dublin. Represented in Belfast Municipal Gallery.

ROBERTS, HILDA, *Woodtown Park, Rathfarnham, Co. Dublin*

Born Dublin, 1901. Studied at London Polytechnic, National College of Art, Dublin, and in Paris. Regular exhibitor Royal Hibernian Academy and other Dublin exhibitions. Represented in Belfast, Limerick and Waterford Municipal Galleries. Picture bought by Haverty Trust. Illustrations for books.

SALKELD, CECIL FFRENCH, A.R.H.A., 43 *Morebampton Road, Dublin*

Studied Dublin Metropolitan School of Art and K.u.K. Academy of Arts, Cassel, Germany. Won competition open to all Germany for Government Commission for a large Mural scheme and executed same.

Represented in collections in many European countries, India and America. When still under twenty had work shown at 1st World Exhibition (Düsseldorf, 1922) and hung with eleven other artists including Picasso, Klee, Kandinsky, Nolde, etc. Literary and art criticism at home and abroad.

SCALLY, CAROLINE, 81 *Upper Leeson Street, Dublin*

Born Dublin, 1894. Studied Dublin Metropolitan School of Art under Sir William Orpen and in Paris and Italy. Regular exhibitor in annual exhibitions in Dublin and Cork. Picture bought by Haverty Trust.

SCOTT, PATRICK, B.A.R.C.H., 24 *Lower Leeson Street, Dublin*

Born Kilbrittain, Co. Cork, 1921. Self-taught. Regular exhibitor in Irish Exhibition of Living Art. Has also shown in Associated American Artists Galleries, New York, "Young Irish Painters" Exhibition, London, and Exhibition of Subjective Art, Dublin.

SLEATOR, JAMES, R.H.A. (1889-1950)

Born Co. Armagh, 1889. Studied Belfast School of Art and at Dublin Metropolitan School of Art under Sir William Orpen; also at Slade School, London, and in Paris. Spent five years in Florence painting landscapes and portraits. Later worked in London with Sir William Orpen. Exhibited regularly in Royal Academy and Royal Society of Portrait Painters.

President of Royal Hibernian Academy, 1945-1950. Represented in Dublin, Belfast and Cork Municipal Galleries, foyer of Abbey Theatre, and English public collections.

SMITH, CYNTHIA, *Bally Olaf, Dundrum, Co. Dublin*

Born London, 1912. Studied Royal Hibernian Academy School, National College of Art, Dublin, and with Miss Elizabeth Rivers. Exhibits regularly in exhibitions of Water Colour Society of Ireland. Has also shown in other Dublin exhibitions. One-man show in Dublin, 1949.

STOKES, MARGARET, 32 *Upper Pembroke Street, Dublin*

Born Dublin, 1917. Pupil of Mainie Jellett. Also studied at Royal Hibernian Academy School and in London, Glasgow and Edinburgh. Regular exhibitor in exhibitions of Water Colour Society of Ireland. Has shown in other Dublin exhibitions and has had a one-man show.

TUOHY, PATRICK, R.H.A. (1894-1930)

Born Dublin, 1894. Studied at Dublin Metropolitan School of Art under Sir William Orpen and in Madrid and Paris. Exhibited at Carnegie Institute, Pittsburgh, at the Paris Salon, and at the Royal Academy, London. Worked in U.S.A., 1928-30. Painted and drew many well-known personalities in Ireland and U.S.A. Died New York, 1930.

Represented in National Gallery of Ireland, Municipal Gallery, Dublin, and in collections in New York.

VANSTON, DOREEN, 3 *Mount Street Crescent, Dublin*

Born Dublin, 1908. Studied in Paris at Académie Ranson and Académie L'hôte. Exhibits regularly at Irish Exhibition of Living Art. Has also shown in Paris, London and Costa Rica.

Represented in National Gallery of Costa Rica.

WALLACE, GEORGE, *Telde, Dalkey, Co. Dublin*

Born Sandycove, Co. Dublin, 1920. Studied at West of England College of Art, Bristol. Exhibits regularly in annual exhibitions in Dublin and Bristol. Teaches painting in a Cornish Art School.

YEATS, ANNE BUTLER, 46 *Palmerston Road, Dublin*

Born Dublin, 1919. Studied Royal Hibernian Academy School. Regular exhibitor in annual exhibitions in Dublin. Work included in Irish Exhibition in Holland, 1949.

Picture bought by Haverly Trust. Has designed stage scenery for the Abbey and other theatres. Teacher and illustrator. Member of Irish Exhibition of Living Art Committee.

PRICE
50
CENTS

PRINTED
IN
IRELAND

