

CROESO I YNYS MÔN

THE ISLE OF ANGLESEY



Britain's
TREASURE
ISLAND

Cross from the mainland over the famous
Menai suspension bridge, or Stephenson's Britannia
bridge. A holiday on the Isle of Anglesey
is the start of an adventure!

COVER: Trearddur Bay
is one of the island's most
popular resorts.

Goludog, ac ail Eden
Dy sut, neu Baradwys hen.

... Discovery

ISLANDS are often a world apart, and Anglesey is no exception – a patchwork of lakes and fields bordered with stone walls, of winding lanes, rocky coves and sandy dunes. In the warm spring sunshine you can walk by fields full of lambs and buttercups, set against a backdrop of mountains to the south. The long days of summer are to be spent on the beaches, or paddling in the rockpools. Autumn is a time to watch waterfowl on the lakes, to wander the sea strand, or to go blackberrying.

Around October or November the first snows of winter sprinkle the mountains of Snowdonia. One stormy winter's night over a century ago Moelfre's rocky shore spelled doom for the clipper 'The Royal Charter'. Homeward bound from the Australian goldfields she sank here, scattering a fortune in sovereigns into the waves.

TREASURE HUNTERS TAKE NOTE!

Every island has its mystery, whether of Kidd's doubloons or Long John Silver's pieces of eight. Can you crack Anglesey's own riddle of the past? Discover a set of parchment charts. They contain codes and cryptic clues which guide an odyssey around this booklet's map. Write the letters you collect in the boxes. You'll need nothing more than the information presented, and a taste for adventure. Good hunting!

(For the sake of this puzzle the Welsh letters dd, ch, ff, etc., are treated as two separate letters)



A peaceful summer's day in western Anglesey. Lighthouses tower above rocks at South Stack and over Llanddwyn's sandy coves.

Hudolus aeres dyl, - a dwyfraich
Y dyfroedd amdani.



A handful of cowries picked from Llanddwyn's sandy bay

Golden Sands

ANGLESEY'S coastline is waiting to be explored. At Newborough and Red Wharf Bay are miles of golden sands and at South Stack a famous lighthouse warns of towering cliffs.

Family resorts such as Trearddur, Benllech, Cemaes and Rhosneigr offer safe swimming and holiday fun, whilst around the coast you will discover small coves and inlets and beautiful estuaries.

The quest begins at dusk ...
Steel and stone over air and water,
where Leo guards the second gateway.
The road takes you towards the setting sun.
Capture the first settlement's second most
common character
... and from the town's end also take
prisoner 11.22.33.44

(1) (2) (3) (4) (5)

One of Anglesey's ancient standing stones, in the parish of Llandegfan.



Beaumaris Castle, one of the most impressive strongholds built by the English invader. Edward I began work on the castle in 1295.



The packhorse bridge is at Aberffraw. The princes of Gwynedd held court here until the defeat of Llywelyn ap Gruffydd by Edward I of England.

Anglesey's history stretches back to the stone age. A large number of neolithic burial mounds have survived into this century, and Bryn Celli Ddu is one of the best preserved — a symbol of the island's distant past.

Mi awn i weld Môn unwaith eto ... am fod rhyw henaint tawel ar ei herwau hi.



This bronze plaque, dating from the second century BC, is part of a fabulous hoard discovered at Llyn Cerrig Bach.

Treasure Trove!

ANGLESEY and her people have stood at the crossroads of Welsh history. The ancient Celtic priesthood, the druids, honoured the island as one of the most magical places in the British Isles.

In the Dark Ages the people of Anglesey fought off attacks by the Irish, the Vikings and the English ... and from Aberffraw the princes ruled Wales for six centuries, until, following the death in 1282 of the last Welsh prince, English invaders came to power.

A night-time search for gold ...
Stride one league north, as the crow flies.
Rest at the crossroads until moonrise, then follow its silver light east along the road until you meet the sea.
Entering the town at thirteen minutes to four you discover Welsh gold.
Add this gleaming triad to your hoard.

(6) (7) (8)

Boating in Beaumaris. Every August the Menai Strait attracts yachtsmen from far and near for the Royal Anglesey Yacht Club's regatta.

The inns of Anglesey offer hospitality, relaxation and good ale. Yr Owain Glyn Dŵr is at Llanddona, near Beaumaris.



Galleons at anchor are just part of Rex Whistler's wonderful panoramic mural at Plas Newydd, a National Trust property on the shores of the Menai Strait.



The circus comes to town! Children pay their respects to an unusual visitor on Beaumaris Green.

The longest platform ticket in the world!

BRITISH RAILWAYS BOARD (M)
BR 4405/4

LLANFAIRPWLLGWYNGYLLGOGERYCHWYRNDROBWLLANTYSILIOGOGOGCH

No. 25607

SOUVENIR PLATFORM TICKET

AVAILABLE ONE HOUR ON DAY OF ISSUE ONLY
NOT VALID IN TRAIN NOT TRANSFERABLE

FOR CONDITIONS SEE OVER

1	2	3	4	5	6	7	8	9	10	11	12
---	---	---	---	---	---	---	---	---	----	----	----

09 C 07



As an alternative to summer fun on the beaches three modern sports centres provide a host of activities—including squash, table tennis and swimming—throughout the year.

The Plas Arthur centre at Llangefni and the leisure centre at Holyhead each boast a shallow and warm children's pool as well as full-sized adjoining pools. Aspiring rock climbers can learn new skills on the climbing wall at Llangefni, whilst Amlwch offers tennis in addition to the indoor options.

Those who enjoy just watching rather than participating are welcome too! ... and refreshments are available.

A nine hole public golf course has recently been established close to Llangefni, and visitors are always welcome.



For more information about the Isle of Anglesey's sporting facilities please telephone Llangefni (0248) 724666.

1986 SUPPLEMENT

Croeso i Ynys Môn!
Welcome to Anglesey!

THERE is no shortage of interesting places to explore during an island holiday.

On the Isle of Anglesey first rate inns and restaurants, museums and galleries, and cinemas and sports centres provide entertainment for all the family.

The blue pages list accommodation to suit every pocket: hotels and guesthouses, caravan and camping sites, farmhouses, and for self catering.

Whichever your chosen corner of Treasure Island, you'll be assured of a warm welcome. Enjoy your stay and visit us again.

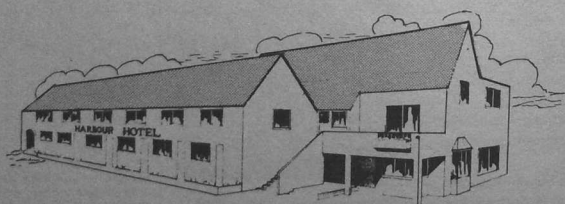
Every effort has been made to ensure accuracy in this publication, but the publishers can accept no liability whatsoever for any errors, inaccuracies or omissions, or for any matter in any way connected with or arising out of the publication of the information.

As changes in prices, services and opening times occur after press date it is advisable to confirm the information given with the establishment concerned.

THE HARBOUR HOTEL

Harbour View, Cemaes Bay, Isle of Anglesey
telephone Cemaes Bay (0407) 710273

The Harbour Hotel is a small family hotel overlooking Cemaes Bay's picturesque harbour, and is only thirty yards from the sandy, coved beach. Children are always welcome. Many of our rooms are family rooms, all have colour tv, tea-making facilities, and their own bathrooms en suite. The dining room overlooks the beach, and there is a full à la carte menu and an extensive wine list. A banqueting suite can be booked for wedding parties and conferences.



The hotel is open to non-residents.



Come and enjoy a visit to Pili Palas (the 'butterfly palace'), where hundreds of butterflies from all over the world are to be seen. Relax among exotic plants while butterflies fly around you.

The butterflies of Wales
Tropical butterflies
Other insects
Educational centre
Giftshop and café
Disabled visitors welcome
Free parking

PILI PALAS

Ffordd Penmynydd, Menai Bridge,
Isle of Anglesey, Gwynedd LL59 5RP
telephone 0248 712474

Dewch i ymweld â Pili Palas. Mae cannoedd o loynnod byw o bob rhan o'r byd i'w gweld yma. Mae rhai ohonyn nhw yn enfawr – chwe modfedd ar draws yr adain, yn hedfan yn rhydd o gwmpas y palas.

Gloynnod Cymru
Gloynnod trofannol
Pryfetach
Canolfan addysg
Siop a caffi
Croeso i ymwelwyr methodig
Parcio am ddim

PILI PALAS

Ffordd Penmynydd, Porthaethwy,
Ynys Môn, Gwynedd LL59 5RP
ffôn 0248 712474



CLOSE ENCOUNTERS OF THE MARINE KIND

Spectacular local sealife in imaginative enclosures, all under cover of a large modern building. A fascinating experience, rain or shine! Look down on hundreds of live lobsters. Marvel at the graceful rays. Delight in feeding the leaping rainbow trout. Introduce yourself to Jaws' British cousins.

New specimens in throughout the summer.

TEAROOMS & CRAFT SHOP

A delightful room is set aside for your refreshment. Choose from a wide selection of delicious food and drink. Sample some of our seafood specialities. Browse through our range of local crafts and gifts for a memento of your visit.

Postcards – Real dairy ice cream – T shirts – Confectionery

SEAFOOD SHOP

Feast your eyes on our mouthwatering fresh, live and frozen seafood, and try something new. Fish vacuum packed on purchase.

We welcome visitors 10am to 5pm seven days every week from March to October. Parties can be catered for, evenings also. Ring for details. We are situated on the A4080. Follow signs from Brynsiencyn village.

AN IDEAL VISIT FOR ALL THE FAMILY

The Oyster Hatchery, Brynsiencyn, Isle of Anglesey
telephone (24 hours) Brynsiencyn 411



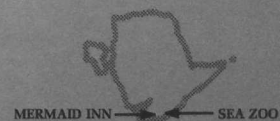
Foel, Brynsiencyn, Isle of Anglesey
telephone 0248 73 292

Idyllically situated on the shore of the Menai Strait, with panoramic views of Snowdonia and Caernarfon castle, the Mermaid was originally the landing-stage inn for the Foel ferry, which ran between Caernarfon and Anglesey.

Why not stay a few days? All our bedrooms have en suite facilities, and seafaring guests can take advantage of our private slipway and jetty.

Wine and dine at the Inn, sampling the variety of local fare on our extensive menu.

The Mermaid Inn: ideally situated for a host of activities – whether sporting, leisure or just relaxation!



RHOSTREFOR HOTEL AND RESTAURANT

Benllech Bay, Isle of Anglesey LL74 8SR

Telephone 0248 852347 or 0248 853368



Set in one acre of gardens, overlooking the beautiful Benllech Bay, with its safe, sandy beaches, ideal for water sports.

Fully modernised offering all en suite bedrooms; children welcome, family suites available.

One of the finest à la carte restaurants on the island.



Heated swimming pool.

LIVERPOOL ARMS HOTEL THE ADMIRAL'S TAVERN

Beaumaris, Isle of Anglesey LL58 8BA

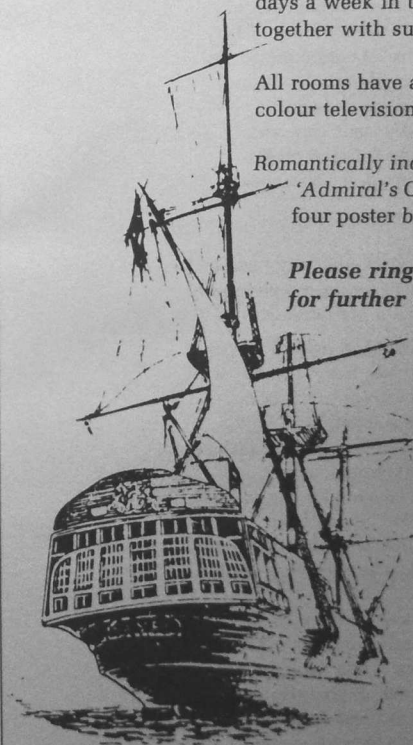
THE DIAMOND IN THE TREASURE CHEST

Recently completely refurbished to the highest standard, offering a varied menu served seven days a week in the comfort of a nautical bar, together with superior accommodation.

All rooms have a private bathroom and toilet, colour television and central heating.

Romantically inclined? — ask for details of the 'Admiral's Cabin', a luxuriously appointed four poster bedroom.

Please ring Allan or Margaret Jones for further details, 0248 810362



ROBERTS HOLIDAYS

Dept A, Bryn-y-Don, Benllech, Isle of Anglesey
telephone 0248 853838

- self-catering accommodation.
- check out our credentials.
- over 300 self-catering properties.
 - traditional Welsh cottages.
 - modern bungalows.
 - luxury static caravans.
 - seaside flats and chalets.
 - quaint Anglesey farmhouses.

We can cater for groups from two to twelve.

Our accommodation is fully furnished and inspected by Mr Roberts personally to ensure a high standard.

Quick, efficient and helpful service. Personal service from people with extensive knowledge of the island and its attractions.

We have the accommodation to meet your requirements.

Let us do the booking for you and save wasted 'phone calls.

You may find our comprehensive holiday insurance scheme invaluable.

For an enjoyable holiday on Britain's Treasure Island contact us today for a copy of our 1986 brochure, or, alternatively, tell us your requirements and we'll find the most suitable property for your needs.



ECONOMIC DEVELOPMENT UNIT

THINKING OF STARTING A BUSINESS ON ANGLESEY?

We can help.

Our resources include
FREE BUSINESS ADVICE
FACTORIES & WORKSHOPS OF ALL SIZES
INDUSTRIAL LAND FOR SALE OR LEASE
and FINANCIAL INCENTIVES

For further information contact
Mike French or Bryn Parry at the
Economic Development Unit
Ynys Môn/Isle of Anglesey Borough Council
Penyrsedd, Llangefni, Isle of Anglesey, Gwynedd LL77 7JA
telephone 0248 724810

- Bar snacks
- Accommodation
- Meals: day and evening



- Parking
- Facilities for children
- Parties/coaches: for up to 100 people.

ANGLESEY INN STYLE

A comfortable, roomy hotel with a reputation for very good quality meals, excellent service and many amenities. The Valley is a familiar landmark on the A5 just 3 miles from Holyhead, ideally situated near beautiful bays and beaches. Everything for a happy holiday is nearby – swimming, fishing, shooting, golf.

VALLEY HOTEL, Valley, Anglesey. Tel: (0407) 740203



BAY COURT HOTEL

Benllech Bay, Isle of Anglesey
Telephone (0248) 852573



Benllech's most modern hotel built for the express purpose of providing first class accommodation with service, and a reputation for excellent food to match. The hotel is personally supervised with guests' comfort and enjoyment uppermost.

AA** RAC** Only 200 yards from the beach. Nearby: golf, tennis, bowling, fishing, sailing and riding. Two fully licensed bars and a restaurant. Bar snacks, table d'hôte and à la carte menus.

Brochure and tariff on request.

The Old Rectory Llanfairynghornwy

Bed & breakfast and evening meal

4 miles from Cemaes Bay, 3 miles from Church Bay.
A quiet and peaceful corner of Anglesey.

Georgian Country House set in three acres of woodland and gardens, located in rolling countryside close to rocky coves and sandy bays.

Sheltered tennis courts
Outdoor swimming pool and table-tennis room.

Six guest bedrooms with private bathrooms, comfortable lounge, home cooking using garden and local fruit and vegetables wherever possible. Children very welcome.

Pets by arrangement.

Golf, sailing, horse riding, sea and freshwater fishing all in close proximity.

Please ring Mrs Maule for brochure,
Telephone 0407 730741.



PLEASURE CRUISES AND SEA FISHING FROM BEAUMARIS

PLEASURE CRUISES:

- to Penmon lighthouse and to view Puffin Island.
- up the Strait to Menai Bridge.

SEA FISHING TRIPS:

- Four hour and eight hour trips, with free refreshments, and rods for hire.
- Four hour summer evening trips.

To book, or for more information (including details of evening trips) please telephone Beaumaris (0248) 810251 or call at the kiosk at Beaumaris pier.

STARIDA SEA SERVICES
74, Maeshyfyd, Beaumaris





THE LORD DINORBEN HOTEL

Dinorben Square, Amlwch, Isle of Anglesey, Gwynedd LL26 0LG
Telephone Amlwch (0407) 830358
Fully Licensed Free House

The Lord Dinorben Hotel, an extensively modernised former coaching house, is situated in the centre of the town. Centrally heated throughout, the hotel is ideal for a holiday break at any time of the year, for the seasons are gentle in the Isle of Anglesey and the winter climate is invariably mild. The restaurant offers good food and service of a very high standard and an excellent choice of wines. The delightful modern bedrooms all have private bath or shower, and colour television is available in most rooms. There are large, comfortable cocktail bars and lounges in which you may relax in our happy family atmosphere.

Henlllys Hall



BEAUMARIS, ISLE OF ANGLESEY
telephone 0248 810412

A country manor house set in fifty acres with superb views. Heated outdoor pool, tennis court, sauna, jacuzzi bath. Fourposter beds. All bedrooms with private bathrooms, colour tv and tea & coffee making facilities. Ideal for honeymooners and families. Two bars. Excellent à la carte restaurant open to non-residents. Lunches, afternoon teas and bar snacks. Also, in the grounds, self-catering cottages, bungalows and apartments with full use of hotel facilities.

LLWYDIARTH FAWR

Llanerch-y-medd, Isle of Anglesey LL71 8DF
telephone Llanerch-y-medd (0248) 76321

Bed and Breakfast (evening dinner optional) in a secluded Georgian residence set in 750 acres of woodland and farmland. Centrally situated for beaches, fishing, golf, riding and leisure centres. Guests are accommodated in spacious bedrooms all with H&C, tea making facilities. En suite also available. Two sitting rooms. Dining room with separate tables. Full central heating. From £9 to £10. Personal attention and a warm welcome to guests, who will enjoy the farming activities, walks and private fishing.

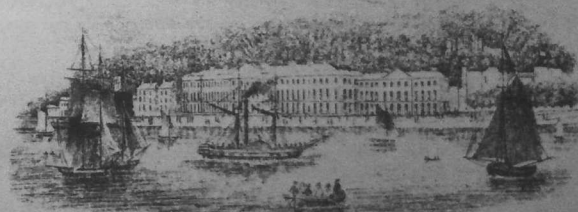


SELF-CATERING HOLIDAYS

Wales Tourist Board award winning cottage and bungalow.
Also available, house, flatlet and caravan.
Price includes all electricity, linen, cots etc.
Sleep two to ten. £50 to £200 per week.
Available all year.
Send for a brochure, or telephone Mrs Hughes for details.

BULKELEY ARMS HOTEL

Beaumaris
Tel: 0248 810415



This 3-star hotel is Anglesey's finest.

Adjacent to the sea and town centre. Superb views of Snowdonia and the Menai Strait. Comfortable and elegant. Lively bars, restaurants and lounges. Colour tv, radio and telephone in all bedrooms. Games room, ballroom, lift, gardens and car park.

Local attractions: Fishing, sailing, climbing, horse riding and golf.

WILMA LODGE PRIVATE HOTEL

Bay View Road, Benllech, Isle of Anglesey LL74 8TW
Telephone Tynyngongl (0248) 852367.

Situated on the approach road to Benllech Beach, Wilma Lodge is a modern establishment operating purely as a private hotel, offering a high standard of accommodation in a comfortable atmosphere without restrictions. There are thirteen bedrooms on the ground and first floors and in the bungalow annexe, together with a bar lounge, TV lounge, and quiet lounge.

Widely varied menus of traditional food, including freshly cooked roasts and home baked sweets, are served. Children of all ages are welcome and a laundry/kitchen, high chairs, cots, nursery teas and baby listening services are available.

Open all the year and centrally heated, Wilma Lodge is ideal for holidays at any time and also offers special breaks for autumn, winter and spring.

VISIT ANGLESEY'S FIRST OPEN FARM TRAIL

RHUDDLAN FAWR FARM, BRYNTEG
AND TY MAWR FARM, BRYNTEG

Enjoy a visit to a traditional Welsh farm and see the farm animals and pets.

Walk the farm trail with its extensive views of the island,
and watch the season's farming activities.

Attractions include

ponyrides, a pets corner, farm antiques and machinery,
and helping to feed the animals.

On a rainy day see the animals indoors!

Open daily except Saturdays, from 10am to 6.30pm, until the end of October.

Parties are welcomed, by arrangement.

The farms are just off the B5110, between Anglesey's main market town Llangefni, and Brynteg, close to the very popular seaside resort of Benllech.

For further details write to Mr & Mrs T Davies
Rhuddlan Fawr, Brynteg, Isle of Anglesey
or telephone Tynyngongl (0248) 852216

TRECASTELL HOTEL, BULL BAY

near Amlwch, Isle of Anglesey
telephone 0407 830651

The Trecastell is a fully modernised Victorian hotel overlooking Bull Bay, giving panoramic views of the Irish Sea, and is strategically situated adjacent to the Bull Bay Golf Club.

The hotel offers:

En suite bedrooms with tea/coffee making facilities.

Full central heating.

Fully licensed, with lounge and cocktail bars.

Games room with pool table.

Television lounge.

Restaurant with table d'hôte and à la carte menus.

Bar meals served at lunchtime and in the evenings.

Sheltered gardens.

Morning coffee.

Large car park.

AA & RAC TWO STAR HOTEL. OPEN ALL YEAR.

Open to non-residents.



Truly Britain's treasure island!

Golden sands, rocky coves, nature reserves, fishing trips, golf courses, sailing and safe swimming. Beaches galore - one just across the road from our hotel. We have delightful bedrooms - all en-suite, delicious food, our own real-ale pub, grill room, sophisticated night club, luxurious 10 table Snooker Club and Health/Squash Club.

We offer -

The energetic - Snooker/squash club (10 snooker tables). Beachcomber discotheque & night club (over 21's).

The not so - The London Road Pub, with real ale.

energetic - 'Yesterdays' Cocktail Bar.

The exhausted - The Sanctuary: health, fitness, hair and beauty centre.

The famished - Four Seasons Restaurant. London Road Grill Room.

We also offer a range of bargain breaks which will include 2 nights accommodation, 2 full english breakfasts and, 2 table d'hôte dinners (or £7.50 allowance off our à la carte menu). We accept and change Irish punt and all other foreign currencies.

Choose from - Weekend Breaks £48.00 per person Midweek Breaks £54.00 per person
Golf Weekends £64.00 (includes 2 days green fees) Squash/Snooker Weekends from £52.00
Health Weekends £59.50 includes treatments of the following in any combination: Whirlpool Bath, Sauna, Sun Treatment. Plus 10% discount off any other health and beauty treatment.

Tel: Trearddur Bay (0407) 860332 Telex: 61529 (Beach G)



GLYN LLIFON HOTEL

Marianglas, Isle of Anglesey LL73 8PL
telephone Tynygongl (0248) 852427

When you need a change of scene, come away to Glynllifon. We offer you a superb base from which to explore the area, with a choice of accommodation, fine food and excellent service with that personal touch.

We welcome couples or families.

For more information simply call Robin Beardsley, 0248 852427.

American Express, Diners Club or Access cards are warmly welcome.

MIN-Y-DON HOTEL

Red Wharf Bay, Isle of Anglesey LL75 8RJ
Telephone Tynygongl (0248) 852596

Fully residential. Licensed free house. Large car park.

Beautifully situated on the sandy beach at Red Wharf Bay off the A5025 road. Noted for hospitality, a friendly, relaxing atmosphere and excellent food. Varied bar meals are served daily at lunch time and in the evenings. The candlelit restaurant is also open to non-residents 7pm to 9pm. Children welcome – also dogs.



THE LIVERPOOL ARMS

St George's Pier, Menai Bridge, Isle of Anglesey
telephone Tony and Glynwen Thickett, 0248 712453

The traditional atmosphere of an old ferry inn has been maintained with small rooms appointed with pictures and artifacts of bygone years. The bars are well stocked and real ale is of the highest standard. A large selection of liqueurs, fine brandies and vintage ports is kept. Bar and restaurant meals are the speciality of the house, offering freshly prepared home cooked food. Local seafood and game are available according to season.

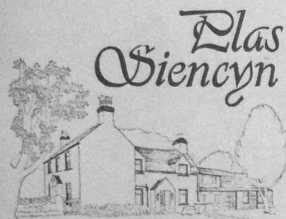


THE WOODLANDS

Benllech, Isle of Anglesey. Telephone Tynygongl (0248) 852735.
Bed & Breakfast – Evening Meal

Situated on the A5025 mid-way between Benllech and Red Wharf Bays, the Woodlands Guesthouse stands in its own grounds, sheltered by extensive woods overlooking the beautiful bay. It is said to have romantic connections with smuggling: the cellars were possibly used for this purpose. tv and bar lounges, separate tables in dining room, table tennis and pool tables in games room. Single, double and family bedrooms (one en suite), all centrally heated and equipped to hotel standards. Generous childrens' reductions. Large car park. The resident proprietors David and Margaret Wilkes assure you of high standards of accommodation and cuisine at reasonable prices.

S.A.E. for brochure/tariff.



Plas Siencyn has two cottages, both modernised but maintaining their olde worlde charm, in a large lawned garden. The cottages sleep four and five. Fully furnished, comprising lounge, kitchenette, two bedrooms, bathroom, toilet, colour tv, all electric, private parking. Personal supervision.
Mrs M Atkinson, Plas Siencyn, Brynsiencyn LL61 6UW.
Telephone 0248 73353.

Open all the year.
Weekends in winter, autumn and spring.

'People to People' When you stay with us you will be staying with a family actively involved in the life of this treasure of an island. Our interests include farming, antiques, the lifeboat, eisteddfodau, Welsh culture, etc. We like meeting people, especially people who like meeting people.

THE OLD KING'S HEAD

Llanerch-y-medd, Isle of Anglesey LL71 8BY

We are situated in a quiet rural village, an ideal base for your island stay. The King's Head is a large and lovely old coaching inn, now our family home, where a warm welcome awaits you. Spacious guest accommodation: two sitting rooms with colour tv, dining room, library; set in an acre of grounds surrounded by seven acres of meadowland.

Substantial Welsh country breakfast, and the finest evening meals.

Please write to me, or telephone for a brochure **Mrs Mary Owens, 0248 76482**

WHITE LION HOTEL

Resident proprietors: Mr & Mrs K G and S Charlton
Castle Square, Beaumaris, Isle of Anglesey
telephone Beaumaris (0248) 810589

The White Lion Hotel is a small eight bedroomed family hotel, with two bars and a restaurant adjacent to Beaumaris Castle on the shores of the Menai Strait.
Soak up the nautical atmosphere.

Renowned for excellent food, good wines and beers.
 Car parking available.



Discover the treasure of this small country workshop which designs and produces a unique collection of Knitwear from NATURAL WELSH WOOL including the ANGLESEY PULLOVER which has a Menai Bridge design feature.

Workshop (near chapel) Rhoscolyn. Tel. (0407) 860861

OPEN 1.00 to 5.00 p.m. Tuesday to Saturday inclusive.
 TYN RHOS, RHOSCOLYN, HOLYHEAD, ANGLESEY, LL65 2SJ.

BRYN TWROG ISAF

Mrs R M Evans, Ty'n Lôn, Bodffordd, Isle of Anglesey
telephone 0407 720560

Self-catering cottage in lovely peaceful countryside five miles from Llangefni. Convenient for Anglesey's fine beaches. House comprises three bedrooms (sleeping six), bathroom, lounge/diner and kitchen. All 'mod cons'. Plenty of parking space. B&W tv. Ideal base for touring the island and convenient for ferry crossing from Holyhead to Ireland. A warm welcome awaits you.

Rates from £60 to £100.



TRE'R DDÔL

Llanerch-y-medd, Isle of Anglesey LL77 7AR
telephone A J Astley, 0248 76 278
 Ordnance survey reference 392812

A warm welcome awaits you at this historic former manor house. Its two hundred acre working farm is centrally situated, convenient for shopping and fishing at Llyn Alaw. Spacious bedrooms with H&C, tea making facilities, period furniture, log fires, laundry room. WTB Farmhouse Award.

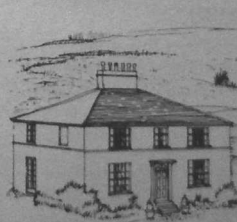
Winner of 1984 Anglesey Farm Competition.

Tŷ MAWR COUNTRY HOUSE HOTEL

Llanfair P.G., Isle of Anglesey, Gwynedd - A Fully Licensed Free House.
Telephone Llanfair P.G. (0407) 712366

Former Country House set in five acres in an extremely quiet position, yet the first hotel on Anglesey on the main A5025 road to Benllech and Amlwch. Accepted by most to be a premier hotel and restaurant providing a very personal service for all visitors. Special features are the delightful beamed ceilings and original inglenook fireplace. All the bedrooms have television and tea/coffee making facilities. Hot and cold water en suite.

Mine hosts: Richard and Liz Blackley.



THE OLD RECTORY

A fine Georgian house, within a mile of Rhoscolyn's delightful sandy bay. Outstanding country and sea views. Ideal for sailing. Lovely coastal walks. Excellent accommodation, food and service. All guest rooms have en-suite bathrooms and tea/coffee making facilities. Licensed. Write or phone for brochure. Children very welcome.

Edna Aldred, Old Rectory, Rhoscolyn, Nr. Holyhead, Anglesey LL65 2DQ. Tel: (0407) 860214

HAFOD WYN HOTEL & RESTAURANT

Tynygongl, Benllech, Isle of Anglesey
telephone 0248 852357

Hafod Wyn is a family run establishment situated on the Llangefni road between Benllech Square and Brynteg within easy reach of Benllech beach. All rooms are en suite with colour tv and tea and coffee making facilities. Children are welcome at reduced rates when sharing rooms.

Two restaurants, 'Williams Room' and 'The Orangery' both open to non-residents every night.

Telephone, or write to, Mrs Stella French or Mr David French.



PLAS RHIANFA PROPERTIES

Dept TI, Glyn Garth, Menai Bridge,
Isle of Anglesey LL59 5NS
telephone 0248 713355

Holiday flats in unique mansion overlooking the Menai Strait and Snowdonia.

Recently fully modernised. Beautiful gardens to water's edge. Fully equipped kitchens, colour tv, fitted carpets, central heating, lift, linen hire, laundry room, tennis court. Yachting, fishing, golf nearby. From £66 to £220 per week. Colour brochure.

CLIFF COTTAGES

Mr & Mrs A E Morris, Cliff Cottages, Trearddur Bay, Isle of Anglesey
telephone 0407 860789

Ten lovely cottages in village situation, at a small holiday complex very near to the sea

Sleeping four to eight plus cots. Furnished in solid pine, fitted carpets, heating. Very well equipped, with colour tv, fridge, etc. Facilities include hotel, shop, laundry, swimming pool, tennis courts and babysitting. Bicycle and fishing rod hire, childrens' play area. Pets by arrangement. Personal service by resident owners.

TREARDDUR BAY HOTEL

Trearddur Bay, Holyhead, Anglesey. Telephone Trearddur Bay 860301.

The Trearddur Bay Hotel is one of Anglesey's largest and most comfortable hotels which has for many years built up a reputation for personal service. The hotel is perfectly situated in its own grounds next to the beach and enjoys some wonderful views. Trearddur Bay is not only the most popular resort in Anglesey during the summer, but with the comforts that the hotel has to offer it is ideal for an early spring or late summer break. Also the hotel is used to catering for those using the car ferry to Ireland from Holyhead, and has provided accommodation over many years to foreign visitors.



Rhianfa Holiday Flats, Bull Bay

telephone Mr & Mrs T Hill, (0407) 830557

Country house set in lawns and gardens with car park. Close to beach, fishing, boating, golf and horseriding at the neighbouring farm. Lovely cliff walks. Flats, all with sea views. Fully self-contained suites sleeping two to six, with shower/bathroom, fitted kitchen, full size cooker, fridge, seating with colour tv. Double and twin bedrooms. Children welcome, cots, high chairs, baby listening. Some dogs. £34 to £108 per week.

HOME FARM CARAVAN PARK

Marianglas, Isle of Anglesey, Gwynedd
Telephone Moelfre (0248 88) 237

An elevated and secluded site, situated on dry land, sheltered by trees and near to several beaches with safe bathing and other social amenities. The site has flush toilets, hot and cold water, free warm showers, and a laundry room with washing machine, dryers and an ironing board.

Dogs on their leads are welcomed.

Further information, and a leaflet giving terms, will be readily supplied.

Electrical hook-up for tourers.

PIECES OF EIGHT, the Trearddur Bay Crafts Centre. For the most original gifts on this treasure island 'Pieces of Eight' is different! We've a vast choice of jewellery to suit every purse, and pictures and craftwork of all kinds, much of it produced here in Wales. In fact, we think we have the best selection of genuinely Welsh made work on the island, with displays from over forty Welsh craftsmen and women, and over two hundred items on show. There's plenty to look at (like Dr Who's policebox we're much bigger inside than out, and we welcome browsers. Just to give you an idea, we've local handcrafted work, interesting jewellery, toys, and a profusion of work in pottery, silver, stone, wood and glass. We've pictures galore, prints, oils, watercolours, beautiful photographs, Victorian prints and paintings. We've tropical seashells and corals, mineral specimens and fossils, and we've an intriguing collection of small antiques and 'collectables' too... and we think you'll appreciate our reasonable prices. So if you haven't yet made your voyage of discovery to 'Pieces of Eight', do come! We guarantee you'll see treasures you've never seen before, in a welcoming and cheerful atmosphere in a shop which is unique.

Traeth Arian

FERN HILL, BENLLECH, ISLE OF ANGLESEY, GWYNEDD LL77 8UF.

Traeth Arian is a beautiful old house set in its own grounds overlooking the sea. We offer comfort, courtesy and consideration in a friendly relaxed atmosphere. We hope our guests enjoy a happy memorable holiday, taking home with them a little of the peace and magic of the island.

- * Dining Room. * T.V. Lounge. * Sep. Bar. * Car Park.
- * Colour T.V. in all bedrooms. * Bed & Breakfast £10.50 p.p.
- * Full Central Heating. * Early morning tea and late night hot drinks.
- * Packed sandwich lunch on request. * Half portory/Half price meals for children on request.
- * Dinner and bar snacks if required.

FOR BROCHURE TEL: TYNYGONGL 852635 (STD 0248).



THE GAZELLE HOTEL

Glyn Garth, Menai Bridge, Isle of Anglesey
telephone 0248 713364

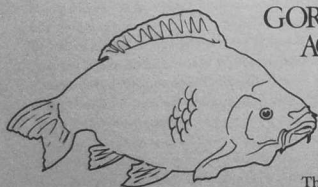
On the shores of the Menai Strait, the hotel is ideally situated to explore the whole of Anglesey together with the mountains of Snowdonia. Full central heating. Coffee making facilities and colour tv in all rooms. Twelve bedrooms, seven with bathroom. Egon Ronay recommended full à la carte restaurant, plus bar snacks. The hotel is open every day of the week for morning coffee, lunches, afternoon tea and evening meals. Parties catered for. Sun terrace with views down the Strait. Ideal centre for both yachting and sea fishing. Mini breaks available.



St David's Estate is one of Anglesey's finest holiday parks, providing a shop, club, launderette, games room, and its own private sandy beach. All our luxury accommodation has gas, electricity, wc, shower and colour tv. Sporting facilities, riding, tennis and golf are all provided locally. For free colour brochure, write or telephone, (Department A):

St David's Estate, Red Wharf Bay, Anglesey, Gwynedd LL75 8RJ telephone 0248 852334 (24-hours).

DRAGON AWARD



GORS FARM HOLIDAY ACCOMMODATION and COARSE FISHING CENTRE

OWNERS: Mr. & Mrs. W.A. FREER

tel: (std 0248) 713410

(LOCATION ONE AND A HALF MILES FROM BEAUMARIS)

Three S/C Cottages and Two Lakes Containing Carp, Roach, Rudd, Tench and Perch, Set in 14 Acres of Picturesque Countryside with views to the whole Snowdonia Range (Day Permits available no Closed Season)

GOLDEN SANDS APARTOL, BENLLECH

telephone 0248 852384

Please send SAE to Mrs M Littlemore, Golden Sands, Benllech, Isle of Anglesey. Family self-catering in our Luxury Apartment Hotel sixty yards from the golden sands of Benllech beach. Apartments are fully equipped, including linen, to sleep two to seven plus a cot.

Luxury bungalow to sleep six plus a cot.
All with colour tv, fridge and electric cooker.

MINFFORDD LLIGWY CARAVANS

Send SAE for details to:

Hughes-Roberts, Minffordd, Penrhos Lligwy, Dulas, Isle of Anglesey
telephone Moelfre (0248) 88 678 or 88 717

Holiday caravans to let on small secluded garden site among flower tubs and lawn areas, with ample parking alongside each caravan. The site is within close proximity of a sandy, safe beach (½ mile), and shops. Most of the caravans are new, luxury models complete with shower, wc and washbasin, electricity, colour tv and fridge, and are fully equipped. The only item required is linen. Sports centres, fishing, golf, riding, and more, are all available locally.

BULL BAY GOLF CLUB

Bull Bay, Amlwch, Isle of Anglesey.

Telephone Amlwch 830960.

An eighteen-hole golf course in a beautiful hilly coastal location.

Full facilities on the course and in the clubhouse.

Visiting golfers are welcome.

make a stop at the
ABC SHOP
Also in our Boatyard
HAULING OUT
STORAGE & REPAIRS
HYDRAULIC BOAT LIFT
BROKERAGE
OPEN ALL DAY SEVEN DAYS A WEEK
LEE-COOPER JAVLIN GUERNSEYS HENRI-LLOYD
FISHING TACKLE CALOR GAS FRESH BAIT
Anglesey Boat Co
GALLOW'S POINT
BEAUMARIS 810359

Why not have a Holiday!! On a Working Farm, in a self Catering Cottage.

CAE'R MYNYDD COTTAGE, CAE'R MYNYDD FARM, TALWRN, Nr. LLANGFNI, ISLE OF ANGLESEY, GWYNEDD.

- ★ Sleeps 6
- ★ All Mod. Cons
- ★ Colour T.V.
- ★ Cot Available
- ★ Ample Car Park
- ★ No Pets
- ★ Children Welcomed Around Farm.
- ★ Pleasant Surroundings Within Easy Reach of Benllech and Red Wharf Bay.

For further details send S.A.E. or phone
Tel: Llangfni 722882 (Std 0248).

NOW!

MIN-Y-FFRWD CARAVAN PARK

Brynteg, Isle of Anglesey LL78 7JQ
telephone 0248 852607

Small select family site. Benllech bay two miles. Eight caravans with tv, fridge, flush toilets, bath-shower. Golf, rambling, swimming, sailing horse-riding and fishing are some of the activities to enjoy.

Touring caravan pitches available.

TANRALLT FARM

Mrs J Roberts, Penyrsedd, Llanfachraeth
Isle of Anglesey
telephone 0407 730354

Attractive farmhouse, pleasantly situated on the village's outskirts. Private. Large lawn with patio. Parking. Close to lovely sandy beaches. Accommodates six to nine, and a cot. Fully fitted large kitchen. Lounge with open fireplace. Four bedrooms. Central heating. 50p electric meters.

FARMHOUSE

Mrs Williams, Bwlchyfen Bentir, Bodffordd,
Llangefni, Isle of Anglesey
telephone 0407 720300

Bed and breakfast (evening meal optional) on working farm.

Panoramic views of Snowdonia.

Conveniently situated for Anglesey's magnificent beaches. Three miles from Llangefni, with facilities for golf, tennis, fishing, leisure centre. Guests have their own lounge/diner with tv.

PLAS TREFARTHEN

Brynsiencyn, Isle of Anglesey
telephone 0248 73379

Plas Trefarth stands in two hundred acres of parkland overlooking the Menai Strait and Snowdonia. Owned by Jack and Marian Roberts. Five bedrooms with en-suite bathrooms. Large tv lounge. Tea making facilities. Wales Tourist Board Farmhouse Award Winner.
A real Welsh welcome!

SELF-CATERING FARMHOUSE

Mrs C Roberts, Tryfil Mawr, Llandrygarn,
Llannerch-y-medd, Isle of Anglesey
telephone 0248 76 281

Spacious farmhouse of character in half-acre garden. Centrally situated for beaches and sporting facilities. House sleeps ten (+ cot). Lounge with tv, sitting room, kitchen diner, utility bathroom. Fridge, dishwasher, laundry facilities. Bedlinen provided.

TY'R ARDD HOLIDAY FLATS

Red Wharf Bay, Pentraeth, Isle of Anglesey
telephone 0248 70 550

Attractive self-contained purpose built flats sleeping four. All 'mod cons' including colour tv. Set in two acres of woodland and play area - ideal for children. Panoramic views of Red Wharf Bay.

Beach 700yds.

Ample parking.

Boats welcome.

PLAS COCH

Caravan & Leisure Park, Llanedwen
Llanfairpwllgwyngyllgogerychwyrndrobwill-
llantysiliogogogoch
telephone 0248 714272 or 714346

Caravan park. Transit or holiday pitches. Caravans for hire nightly or weekly. Centered around medieval manor house. Convenient for Irish ferry. Bar food, showers, launderette, swimming pool, discotheque, slipway.

Call even if you cannot stay.

VICTORIA HOTEL

Menai Bridge, Isle of Anglesey
telephone 0248 712309

Family hotel situated in elevated position overlooking Menai Strait. Magnificent views reaching from famous suspension bridge to Great Orme. Ideal for Anglesey beaches. Snowdonia.

Large garden, two bars serving traditional ale, a good selection of meals.

Homely atmosphere.

FARMHOUSE BED & BREAKFAST

In Llanfairpwllgwyngyllgogerychwyrndrobwilllantysiliogogogoch.

Four double and one single bedrooms, tv lounge, bathroom, shower. Full breakfast. Panoramic views. Peaceful surroundings. Convenient for beaches and all of North Wales.

Mrs Cox, Sarn Faban, Llanfairpwll
Isle of Anglesey
telephone 0248 712410

PLAS HEN STABLES

Llanddaniel, Isle of Anglesey
telephone 0248 77 414

Self-catering accommodation in charming converted coach-house, sleeps four. Double room, twin room, lounge, kitchen, bathroom. Traditional farmhouse sleeps 12. Three doubles, two twin, one single room, bathroom, kitchen (wood burning stove), lounge, dining room. Extensive grounds and ample parking. Stabling and riding by arrangement.

THE COTTAGE RESTAURANT

Beaumaris, Isle of Anglesey
telephone 0248 810319

Open daily for traditional lunches, 12 noon to 3.30pm. A la carte menu served each evening, 6.30 until last orders at 10pm.

Coach parties by appointment.

Half portions available.

Good food with pleasant service in warm surroundings.

LASTRA FARM

RESTAURANT AND TEA ROOM
Amlwch, Isle of Anglesey
telephone 0407 830906

Converted from traditional Welsh farmhouse and outbuildings into comfortable, homely establishment.

Wide variety of freshly cooked meals from morning coffee to an exclusive à la carte evening menu.

Although off the beaten track, a Welsh welcome awaits you all year round.

OLD TOLL GATE, GWALCHMAI

Mrs Parry, 6 South View, Heighington,
Darlington, Co Durham
telephone (after 6) 0325 313807

Built by Thomas Telford.

Fully modernised. Five miles from beaches. Secured garden. Sleeps four (+ cot). Ground floor bedroom. Pets welcome, open fire. Central heating, tv. Linen provided.

£50 to £110.

HOLYHEAD GOLF CLUB

Trearddur Bay, Isle of Anglesey
telephone 0407 3279

Often called the Gleneagles of Wales. Excellent 18-hole course. SSS70, always in good condition, each hole different in character.

High standard of catering facilities provided in large, spacious clubhouse.

Burton Dormy House provides excellent accommodation for those wishing to stay.

HAFOD

Amlwch Road, Benllech, Isle of Anglesey
telephone 0248 853373

Ground floor flat and cottage bungalow. Fully self contained and well furnished. Flat sleeps four. Bungalow sleeps 4/5. Electric cooker, fridge, colour tv. Ironing facilities. 50p slot meter. Ample parking space. Near sandy beach and shops. Children welcome.

Local amenities include riding, tennis, bowls.

SELF-CATERING COTTAGES

details from

Mrs Clarke, Min-y-Garth, Glyn Garth
Menai Bridge, Isle of Anglesey
telephone 0248 713358

Two self catering holiday cottages to sleep six and four. Half a mile from the lovely sandy bay at Maltreth. Children and family pet welcome. Terms on application.

BARON HILL GOLF CLUB

Beaumaris, Isle of Anglesey
telephone 0248 810231

The course overlooks the Menai Strait and Liverpool Bay and is approximately 1 mile from Beaumaris town centre. It is a 9-hole course, SSS67. Bar and snacks available.

Professional - Peter Maton.
Golf shop, clubs for hire.
Visiting golfers are welcome!

ANGLESEY GOLF CLUB

Rhosneigr, Isle of Anglesey
telephone 0407 810219

A seaside links 18-hole course (SSS69), located four miles off the A5. Laid out to offer a variety of shots the course's relative flatness makes it most enjoyable. Full catering available.

Reasonable green fees, including by the week.
Special rates for parties.

BENLLECH

29 Twrcelyn, Benllech, Isle of Anglesey

Enquiries: Mr P Holliday, Ladybrook House, 262 Bramhall Lane South, Bramhall, Cheshire
telephone 061 439 2612

Self-catering three bedroom bungalow sleeping six. Central heating, ironing facilities, fridge, tv, radio. Sea views, garden front and rear.

Pets by arrangement. Parking.
Extra charge for gas/electricity.
Convenient for the shops,
and close to sandy beaches.

GOLDEN SUNSET HOLIDAYS

(Proprietor: John A Hewitt)

Benllech Bay, Isle of Anglesey

telephone Tyn-y-Gangl (0248) 852345

Modern furnished caravans for hire.

Farmhouse and bungalow to rent.

Shop on site. Separate camping fields.

Miles of beautiful sands and safe bathing, and donkey-rides for children.

Pony rides for adults and children.

BODWINA FARM, GWALCHMAI

Isle of Anglesey

telephone 0407 720233

Self-catering holiday farm annexe.

Sleeps five (+ cot). Lounge, gas fire, tv. Kitchen with electric cooker and fridge. Bathroom. Small bedroom (bunk beds), large (single and double bed). Own linen. Central heating. Garden.

Village half-mile. Central for all beaches.

Children welcome - free baby sitter.

TREFOLLWYN

Rhosmeirch, Llangefni, Isle of Anglesey

telephone 0248 723129

Bed and breakfast in modern farmhouse in secluded quiet surroundings close to Cefni reservoir. Sleeps five. One single and two double rooms.

Own sitting room with colour tv. Fishing, bowling, golf, tennis and sports centre facilities nearby. Market day Thursday. No pets.

Ample car parking.

TY NEWYDD, BRYNSIENCYN

Isle of Anglesey

telephone Mrs Helen Williams 0248 73 617

Six-berth caravan on private site near beaches with panoramic views of Snowdonia.

Bathroom with flush toilet, H&C water, kitchen with fridge, lounge with colour tv and bed settee, end bedroom with double bed, second bedroom with bunk beds. All electric.

DOLMEINIR FARM

Mrs Owen, Dolmeinir Farm

Llangefni, Isle of Anglesey

telephone 0248 722217

Bed and breakfast in 18th century farmhouse. All modern amenities. Sleeps six, two bedrooms. Cot available. Own lounge/diner, tv. Large garden.

Ideal for beaches, walking and fishing.

Special rates for children. No pets.

Also 27' six-berth caravan

BROOKFIELD

Beach Road, Benllech, Isle of Anglesey
telephone 0248 88613 for details

Luxury apartments

within 75 yards of Benllech beach.

Each self-contained apartment consists of two or three bedrooms, sleeping six or eight. Lounge-diner with colour tv, well-equipped kitchen, bathroom with electric shower. Ample parking.

Well-trained dogs welcome.

BEAUMARIS

enquiries to: Mrs Chamberlain, Old Port Office,
Port Penrhyn, Bangor, Gwynedd

telephone 0248 362254 or 351055

Only 200 yards from this neat, comfortable, self-contained flat on the front at Beaumaris and you are paddling in the sea.

Ideal for yachtsmen.

Spectacular views. Close to shops.

Sleeps four. Colour tv.

TY'N FFRWD HOLIDAY CARAVANS

Lligwy Bay, Isle of Anglesey

telephone Moelfre 514

A small site on a quiet lane a half-mile from Lligwy Beach. Each caravan sleeps six in comfort, and is on full mains services, with shower, refrigerator and colour television.

Holiday cottage with private garden also available.

BRYN TAWEL, MARIANGLAS

Isle of Anglesey LL73 8PE

telephone Mrs D Wilkins, 0248 853600

Bed and breakfast, optional evening dinner. Delightful country position between Benllech and Moelfre close to beaches. Home cooking, tv lounge, ample parking, reduced price for children, under fours free.

Open from Easter to November

SEALANDS HOTEL

Station Road, Rhosneigr

telephone Mrs M Woodruff, 0407 810834

Comfortable small hotel close to sandy beaches. Colour tv. Lounge with well stocked bar. Reduced rates for children. All rooms centrally heated. Bar snacks available. Ideally situated for windsurfing, golf, fishing and horseriding.

Open throughout the year.

MENAI BRIDGE

Glan-y-Don, St George's Road,

Menai Bridge, Isle of Anglesey

telephone 0248 713087

Pamper yourself at Pam's waterside guesthouse.

Homely atmosphere backed by first-class service.

Try scrambled eggs with chives on wholemeal toast, a fish dish or 'full fried', with fresh coffee.

£7.50/£8.75 nightly. Fire certificate.

SELF-CATERING BUNGALOW

Mrs Lewis, Cellar Farm,

Aberffraw, Isle of Anglesey

telephone 0407 840257

Superior bungalow pleasantly situated on village outskirts. Private, well furnished, garage, large lawn, close to lovely sandy beaches.

All electric, colour tv. Sleeps six (+ cot).

Available April to October.

Y GARNEDD

Lon Bryn Mair, Brynteg

near Benllech, Isle of Anglesey

This fully equipped cottage sleeps four (+ cot)

A caravan, sleeping four, is also available.

Open throughout the year.

£50 to £90 per week. No pets.

Please telephone

Mrs M V Bean, Tynygongl (0248) 853240

SELF CATERING

Detached house, Tŷ Croes

Midway between Aberffraw and Rhosneigr.
Sleeps nine (+ cot).
Five minutes to sandy beaches.
All electric, colour tv, garage and parking space.
For enquiries, telephone, in the evening
Mrs D Foord, Rhosneigr (0407) 810207

DETACHED, SELF-CATERING

telephone 0407 860205

Comfortably furnished bungalow,
sleeps five (+ cot).
Quiet, private location overlooking Irish Sea with
views over open countryside to Snowdonia.
Near sandy beaches.
Six miles from A5, near village of Llanfaethlu.

BENLLECH

Mrs J Bywater, Ty'n Ffrwd
Ffordd Cynlas, Benllech
telephone 0248 852840 and 852614

Annexe self-contained holiday flat sleeps two to
three. Ground floor. Bedroom, lounge/kitchen,
shower, tv, radio. Cot, high chair. Central heating.
Garden. Sandy beach five minutes. Parking.
Dogs accepted. Scenic drives and walks.
Open all year.

BREATHTAKING VIEW

of sea and mountains from lovely countryside
house two miles from Beaumaris. We offer a
beautifully fitted double room and small single
room for £7.50 pp/pn, including a refreshing
shower and delicious breakfast.
Comfortable lounge (colour tv, open fire)
— welcoming waterside pub nearby.
telephone Menai Bridge (0248) 713108

TYDDYN GOBLET

Brynsiencyn, Isle of Anglesey
telephone 024 873 296

Character farmhouse 200 yards from New-
borough road. Bed and breakfast, or dinner, bed
and breakfast. High standard of home cooking.
H&C, shaver points, central heating throughout.
Also self-catering secluded farmhouse and mod-
ern six-berth caravan.
Privately positioned.
Brochure from Mrs M Williams

MORANEDD GUEST HOUSE

Trearddur Bay, Isle of Anglesey
telephone Trearddur Bay 860324

Situated in 3 acre garden in quiet cul-de-sac but
only five minutes walk to beach,
sailing club and golf course.
There is a sun patio and a residents' lounge with
colour tv. The bedrooms are large and centrally
heated with H&C.

ARGRAIG, LLANGRISTIOLUS

Bodorgan, Isle of Anglesey
telephone Mrs D M Griffiths 0248 724390

Six-berth caravan:
Gas electricity, water, flush toilet, fridge, tv.
£50 to £75 per week.
Bed and breakfast:
Family and double room with H&C, tea/coffee
making facilities, tv, lounge/diner. Children
welcome. No pets. £8 pp/pn or £50pp/pw.

SIX-BERTH CARAVAN ON FARM

Mrs Evans, Pen-y-Bryn Uchaf,
Gwalchmai, Isle of Anglesey
telephone Gwalchmai 720378

Lovely view across open countryside towards the
sea. Beach five minutes by car. Two bedrooms,
lounge, b&w tv. Separate kitchen, cooker, fridge,
mains water, flush toilet, all electric.
Separate shower, washing facilities available.
£45 to £60.

HOLYHEAD

14 Walthew Avenue, Holyhead,
Isle of Anglesey
telephone 0407 4535

Sea views.
Hot and cold water in all rooms, showers in some.
Colour tv. Central heating. Near to car ferry. Chil-
dren up to 12 half price. Two double rooms, one
twin, one single.
Bed and breakfast £7.50 per person per night.
Evening meal, bed and breakfast £11.

FRON DEG ISAF

Llangaffo, Isle of Anglesey
telephone Wyn Jones, 0248 79 696

Four self-catering cottages on small farm. Sleeps
two to seven. 41 miles Llanddwynd beach, island
nature reserve, forest walks. Panoramic views of
Snowdonia from the site. Children's play area. No
passing traffic. Peaceful, relaxing. Colour tv.
Hoffem groesawu mw y Gymry.

VISITING WINDSURFERS

Glan Neigr Hotel is geared to your needs. Shower
room, drying room, tv lounge, two bars.
Snacks, restaurant and beer garden.
Bunkhouse accommodation £4.50.
Weekend breaks from £14.50 + VAT B&B.
One week holiday from £40 + VAT B&B.
For detailed brochure:
Glan Neigr Hotel, Rhosneigr, Isle of Anglesey
telephone 0407 810516

TY'N-Y-CAE, HEDSOR IDAN

Brynsiencyn, Isle of Anglesey
telephone 0248 73 219

Attractive cottage in quiet position on edge of
Menai Strait with views to Snowdonia. Ideal for
fishing, walking, boating. Near to sandy beaches.
All electric. Sleeps five. Parking.
Linen not provided.
Available May to October.
Terms £60 to £100 per week.

HOLIDAY FLATS, restaurant & bar overlooking vast sandy beach

in area of outstanding natural beauty.
Wern y Wylan, near Beaumaris
Gwynedd LL58 8TR

Dial-a-brochure 0248 810398

SELF-CATERING HOLIDAY FLATS

GOLEUFRYN GUEST HOUSE

Cemaes Bay, Isle of Anglesey
telephone 0407 710349

Family run guest house.
Quiet location. Beach and shops within walking
distance. Four ground floor en suite patio rooms.
Two first floor family rooms with H&C.
Residential licence and bar. tv lounge.
Pool table, organ, patio. Weekly barbecue.
Open all year; centrally heated.

CEMAES BAY HOLIDAY COTTAGE

for brochure telephone 0407 830958

Spacious modernised terraced cottage.
Sleeps eight (+ cot). three double bedrooms,
lounge, colour tv, dining room. Sea view. Fifty
yards from headland, two minutes to the beach
and five minutes to the shops.
Pleasant rural aspect. Pet by arrangement.

B & S HOLIDAY LETTING

Strandbo, High Street, Rhosneigr,
Isle of Anglesey LL64 5UX
telephone (0407) 810731 or 810688

We deal in the letting of holiday
accommodation in the Rhosneigr and
surrounding area of Anglesey.
Rhosneigr is Anglesey's main west coast resort,
offering magnificent beaches, an inshore lake,
and excellent facilities for riding, sailing,
windsurfing and fishing.

GROESLON YR ODYN

Brynsiencyn, Isle of Anglesey
telephone Mrs Lambert, 0248 73304

A peaceful 'get away from it all' country bungalow.

Ideal base for touring Anglesey, Snowdonia and North Wales. Beautiful sandy beaches. Comfortable double or single rooms. tv lounge. Parking. Bed and breakfast £7.

AWELON, LLANDDANIEL

Gaerwen, Isle of Anglesey
telephone Mrs Gillian Morris, 0286 76075

Semi-detached house in pleasant surroundings. Fully equipped. Sleeps five (+ cot). High chair. Colour tv. Parking and large garden. Panoramic. Mountain and countryside views. Pets by arrangement. Centrally situated for beaches, leisure centres and places of interest.

CLWCHDERNOG FARM

Llanddeusant, Isle of Anglesey
telephone (0407) 730287 or 831420

Self-catering farmhouse accommodation to let. Self contained. Sleeps seven to eight (+ cot). Three bedrooms, bathroom, kitchen, living room. Bedding supplied. Parking space. Pets welcomed. Ideally situated for beaches, walking and fishing at Lake Alaw.

BRON-Y-GAER

Brynsiencyn, Isle of Anglesey
telephone Mrs Rushton, 0248 73 338

Bed and breakfast in pleasant rural surroundings near beaches in a comfortable family home. Lounge, tv, dining room, two double rooms, one twin. Tea making facilities. Also self-catering cottage sleeping four to five. Double and twin bedrooms, bathroom, lounge, a&w tv, kitchen, private garden.

FRON FARM

CARAVAN & CAMPING PARK
Brynsiencyn, Isle of Anglesey
telephone 0248 73 310

Beautiful site for family holidays with superb mountain views. Ideal for touring. Personal service, modern, clean toilet facilities, hot showers. Laundry room. Shop with home cooked food. Children's play area. Static holiday caravan for hire. Telephone or send SAE for brochure.

BED AND BREAKFAST

The Old School, Rhoscolyn,
Holyhead, Isle of Anglesey
telephone 0407 741593

Renovated seventeenth century school with breathtaking views. Two double rooms and one room with bunk beds. Central heating in bedrooms. Magnificent lounge. Beach, golf, fishing, walking. Rydyn ni'n siarad Cymraeg! Wij spreken Hollands! Carol and Peter van't Wout.

BEAUMARIS

brochure on request from:
Glendale, Llangod,
Beaumaris, Isle of Anglesey
telephone 0248 78 294

BUNGALOW

Twin bedded room, cot, high chair, large kitchen, lounge. All electric, fridge, tv, metered. Ample parking space, garden. Pets welcome.

HOUSE

Twin bedded room, double bedroom, cot fridge, tv, all electric.

3 EFAIL NEWYDD

Benllech, Isle of Anglesey

enquiries to Mr J Irvine, 141 Wilmslow Road,
Cheadle, Cheshire.

telephone 061 437 3286

Detached bungalow to sleep six. Garage and ample parking. Metered electricity. Iron, fridge a&w tv, open fires and electric radiators.

STRAND CARAVAN SITE

Benllech, Isle of Anglesey LL74 8SN
telephone 0248 852181

Choice of twenty two new and little-used caravans. Private site overlooking Benllech beach, near sea, main road, shops, sea fishing and riding school.

All modern conveniences and personal attendance.

Send stamped, self-addressed envelope to
L M Williams

PLAS BODAFON

near Moelfre, Isle of Anglesey
telephone 0248 88 786

Bed and breakfast in former sixteenth century manor below Bodafon mountain.

Two miles to Lligwy beach. Three double bedrooms, one with en suite shower. Lounge with colour tv. Large garden surrounded by farmland. Evening meal by arrangement.

TON-Y-MÔR**HOLIDAY FLATS**

Enquiries to Mrs D Moore
Beach Terrace, Rhosneigr,
Isle of Anglesey LL64 5QD
telephone 0407 810649

Attractive well equipped self-contained sea front flats. Two bedrooms sleep four or five. Superb view over Rhosneigr Bay. Private parking. Sorry, no pets. Please send SAE.

MARIAN FARM

Llanddeusant, Holyhead,
Isle of Anglesey

telephone (0407) 730770 and 860103

Touring caravan and camping site.

Flush toilets. H&c shower. 15 minutes by car to sandy bays. Eight minutes to public houses, five minutes to Alaw fishing lake and bird sanctuary. 15 minutes away from windmill and shop.

FARMHOUSE TO LET

Eugrad, Brynteg,
Benllech, Isle of Anglesey
telephone Mrs Enfy Hughes
Tynyngongl (0248) 853372

Two miles from Benllech beach. Sleeps four (+ cot). Fridge. a&w tv. Large garden.

CEMAES BAY

Self-catering farmhouse.

Brochure from K Jones,
Ty Mawr Farm, Llanrhuddlad.

Holyhead, Isle of Anglesey
telephone 0407 730408

One mile from the sea. Self contained. Five bedrooms. Garden.

Nearby freshwater fishing, bird sanctuary, walks, leisure centre. Convenient for Irish ferry.

MUSEUM OF CHILDHOOD

1 Castle Street, Beaumaris,
Isle of Anglesey
telephone (0248) 810448 and 712498

A visit to the Museum of Childhood opposite the castle is a memorable experience. Hundreds of toys and family items span one hundred years. Coach parties are welcomed at reduced rates.

NANT NEWYDD

CARAVAN PARK
Brynteg, near Benllech,
Isle of Anglesey

telephone (0248) 852842 and 852268

New luxury caravans for hire on small select country site with the following facilities: Games room, large play area, heated swimming pool, washers and dryers, superb toilet facilities with hot and cold water 24 hours a day.

MOELFRE

Mrs Jones, Ty'n Llan, Tregaiian, Llangefni
telephone 0248 722248

Delightful secluded four bedroom period farmhouse sleeping six to eight, on two hundred acres overlooking rolling countryside. Tastefully furnished with spacious dining and sitting room. Setting caters for all tastes, providing seclusion but still within easy reach of shops, resorts, etc.

Birdwatcher's Guide to Anglesey	£1.80
Guide to Walks on Anglesey	£1.75
Ordnance Survey Map of Anglesey	£2.50
Anglesey by Car	95p
Ancient Monuments on Anglesey	60p

These are just some of the publications available from:

The Tourism Unit (Publications)
Isle of Anglesey Borough Council
Penyrrorsedd
Llangefni
Isle of Anglesey LL77 7JA

When ordering please enclose either cheque or postal order for the correct amount made payable to the Isle of Anglesey Borough Council.

The following pages present a selection of the accommodation, attractions, facilities and services available on the Isle of Anglesey.

All prices quoted are correct for 1986 at the time of going to press (in autumn 1985). As changes may occur at any time, it is advisable to confirm the information by telephoning or writing to the establishments you choose.

SERVICED ACCOMMODATION

- 34 Hotels
- 35 Guesthouses
- 35 Farmhouses
- 35 Bed & breakfast

SELF CATERING

- 36 Houses, flats and cottages
- 37 Farmhouses

CARAVANS & CAMPING

- 37 Static caravans
- 38 Touring caravans and camping

ATTRACTIONS, FACILITIES & SERVICES

- 39 Places to see
- 39 Things to do
- 40 Where to eat
- 40 Shops and galleries

ALL CHECKED OUT

All accommodation listed participates in the Wales Tourist Board verification programme for 1986. This means that all addresses will have been visited in due course by a Board inspector, and the standards checked.

FOR DETAILS
SEE PAGE

HOTELS. Serviced accommodation

The price range quoted is for bed & breakfast, per person per night, sharing a double/twin room.

Amlwch	The Lord Dinorben Hotel, Salem Street, Amlwch. (0407) 830358	£10	12
Beaumaris	The Bulkeley Arms Hotel, Castle Street, Beaumaris. (0248) 810415	from £21	13
Beaumaris	Henllys Hall Hotel, Beaumaris. (0248) 810412	£20-£22	12
Beaumaris	Liverpool Arms Hotel, Beaumaris. (0248) 810362	from £22.50	7
Beaumaris	White Lion Hotel, Castle Square, Beaumaris. (0248) 810589	£12-£14	18
Benllech	Bay Court Hotel, Beach Road, Benllech. (0248) 852573	£12.50-£14	10
Benllech	Hafod Wyn Hotel, Benllech. (0248) 852357	£12	20
Benllech	Rhostrefor Hotel, Benllech. (0248) 852347	£15-£16	6
Benllech	Traeth Arian, Fern Hill, Benllech. (0248) 852635	£10.50-£11	21
Benllech	Wilma Lodge, Benllech. (0248) 852367	£10.50-£13	14
Bodedern	Crown Hotel, Bodedern. (0407) 740734	£8	
Brynsiencyn	Mermaid Inn, Foel, Brynsiencyn. (0248) 73292	£14-£17	5
Bull Bay	Bull Bay Hotel, Bull Bay, Amlwch. (0407) 830223	£15	
Bull Bay	Trecastell Hotel, Bull Bay, Amlwch. (0407) 830651	£12-£16	15
Cemaes Bay	Harbour Hotel, Cemaes Bay. (0407) 710273	£10	2
Four Mile Bridge	Anchorage Hotel, Four Mile Bridge, Holyhead. (0407) 740168	£18	
Holyhead	Scimitar Hotel, Porth y Felin, Holyhead. (0407) 2094	£12.50	
Llanfairpwll	Tŷ Mawr Hotel, Llanfairpwllgwyngyll. (0248) 712366	£10	19
Llannerch-y-medd	Old Kings Head, Llannerch-y-medd. (0248) 76482	£7-£10	18
Marianglas	Glyn Lliffon Private Hotel, Marianglas, Moelfre. (0248) 852427	£9.50-£13.50	16
Menai Bridge	Gazelle Hotel, Menai Bridge. (0248) 713364	£16.10-£21	22
Menai Bridge	Liverpool Arms Hotel, Menai Bridge. (0248) 712453	£18	17
Menai Bridge	Victoria Hotel, Menai Bridge. (0248) 712309	from £9	24
Red Wharf Bay	Bryntirion Hotel, Red Wharf Bay. (0248) 852366	£15	
Red Wharf Bay	Min-y-Don Hotel, Red Wharf Bay. (0248) 852596	£14-£17	16
Rhosneigr	Glan Neigr Hotel, Rhosneigr. (0407) 810516	£9.75-£12	29
Rhosneigr	Sealands Hotel, Station Road, Rhosneigr. (0407) 810834	£8.50	27
Trearddur Bay	Beach Hotel, Trearddur Bay. (0407) 860332	from £19.50	15
Trearddur Bay	Trearddur Bay Hotel, Trearddur Bay. (0407) 860301	£14.50-£21.50	20
Valley	Bull Hotel, Valley. (0407) 740351	£13.75	
Valley	Valley Hotel, Valley. (0407) 740203	£12.50-£20	10

When you write to any of the Anglesey addresses please use the full postal address by adding ISLE OF ANGLESEY, GWYNEDD.

GUEST HOUSES. Serviced accommodation

The price range quoted is for bed & breakfast, per person per night, sharing a double/twin room.

Benllech	The Woodlands, Bangor Road, Benllech. (0248) 852735	£9.50-£11	17
Cemaes Bay	Goleufryn Guest House, Cemaes Bay. (0407) 710349	£8.50-£10	29
Cemaes Bay	Tredolphin Guest House, Cemaes Bay. (0407) 710388	£7	30
Holyhead	Mrs Simms, Oakleigh, 4 Walthew Avenue, Holyhead. (0407) 2941	£7-£8	
Holyhead	Mrs Hughes, Graceland, 6 London Road, Holyhead. (0407) 3772	£7-£8	
Llanfairpwll	Mrs Cox, Sarn Faban, Ffordd Penmynydd, Llanfairpwll. (0248) 712410	£8	25
Llanfairynghornwy	The Old Rectory, Llanfairynghornwy, near Holyhead. (0407) 730741	£11	11
Llangristiolus	Mrs Griffiths, Argraig, Llangristiolus, Bodorgan. (0248) 724390	£7.50-£8	28
Marianglas	Mrs Wilkins, Bryn Tawel, Marianglas, Moelfre. (0248) 853600	£7	27
Menai Bridge	Mrs Charker-Pearson, St George's Rd, Menai Bridge. (0248) 713087	£7.50-£8.50	27
Rhoscolyn	The Old Rectory, Rhoscolyn, Holyhead. (0407) 860214	£12-£13.50	19
Rhoscolyn	The Old School, Rhoscolyn, Holyhead. (0407) 741593	£8.50-£10	30
Trearddur Bay	Moranedd Guest House, Trearddur Bay. (0407) 860324	£7	28

FARMHOUSES. Serviced accommodation

The price range quoted is for bed & breakfast, per person per night, sharing a double/twin room.

Bodffordd	J Williams, Bwlchyfen Bentir, Bodffordd, Llangefni. (0248) 720300	£7.50	24
Brynsiencyn	Mrs Roberts, Plas Trefarthen, Brynsiencyn. (0248) 73379	£8-£10	24
Brynsiencyn	M Williams, Tyddyn Goblet, Brynsiencyn. (0248) 73296	£6.50-£7.50	28
Dwyran	Mrs Naylor, Bryn Tirion Farm, Dwyran. (0248) 73232	£7.50-£8.50	
Llanddaniel	S M Bean, Plas Hen Stables, Llanddaniel Fab. (0248) 77414	£7.50	25
Llangefni	Mrs Owen, Dolmeir, Tregaian, Llangefni. (0248) 722217	£7-£7.50	26
Llangefni	G Rowlands, Trefollwyn, Rhosmeirch, Llangefni. (0248) 723129	£7.50-£8	26
Llannerch-y-medd	Mrs Hughes, Llwydiarth Fawr, Llannerch-y-medd. (0248) 76321	£9-£10	13
Llannerch-y-medd	Mrs Astley, Tre'r Ddôl Farm, Llannerch-y-medd. (0248) 76278	£8-£9	19

BED & BREAKFAST. Serviced accommodation

The price range quoted is for bed & breakfast, per person, per night, sharing a double/twin room

Brynsiencyn	Mrs Rushton, Bron-y-gaer, Brynsiencyn. (0248) 73338	£7	30
Brynsiencyn	D Lambert, Groeslon yr Odyn, Brynsiencyn. (0248) 73304	£7	30
Holyhead	Mrs Jones, Bryn Awel, Edmund Street, Holyhead. (0407) 2948	£8	
Holyhead	Mrs Boylin, Homelea, 14 Walthew Avenue, Holyhead. (0407) 4535	£7.50	29
Llandegfan	Mrs R Abas, Greenbank, Llandegfan. (0248) 713108	£7.50	28
Moelfre	Mrs England, Plas Bodafon, Moelfre. (0248) 88786	£7.50-£8.25	31

When you write to any of the Anglesey addresses please use the full postal address by adding ISLE OF ANGLESEY, GWYNEDD.

HOUSES, FLATS, COTTAGES. Self catering

The price range quoted is for a self-contained unit, per week.

The address given is the contact address, not necessarily the address of the property offered for rental.

Aberffraw	Mrs Lewis, Cellar Farm, Aberffraw. (0407) 840257	£70-£140
Amlwch Port	Mrs Hawkswell, Bryn Ednyfed, Amlwch Port. (0407) 831317	£30-£120
Beumaris	Henllys Hall, Beumaris. (0248) 810412	£150-£250
Beumaris	Wern-y-Wylan, near Beumaris. (0248) 810398	£55-£165
Beumaris	Glendale, Llangoed, Beumaris. (0248) 78294	£70-£160
Beumaris	Menai Holidays, Old Port Office, Port Penrhyn, Bangor. (0248) 362254	
Benllech	Mrs Bywater, Ty'n Ffrwd, Ffordd Cynlas, Benllech. (0248) 852840	£40-£70
Benllech	Mrs Williams, Llysfryn, Tynyngogl, Benllech. (0248) 852918	£60-£80
Benllech	Mrs Russum, Shepherds Hill, Tynyngogl, Benllech. (0248) 853320	£50-£85
Benllech	Mr Rowlands, Hafod, Amlwch Road, Benllech. (0248) 853373	£50-£100
Benllech	Mr J H Irvine, 141 Wimslow Road, Cheadle, Cheshire. (061) 4373286	£45-£150
Benllech	Mr P Holliday, 262 Bramhall Lane South, Cheshire. (061) 4392612	£80-£155
Benllech	Mr J Barratt, 18 Meadow Road, Aldridge, Walsall. (0922) 52687	£42-£160
Benllech	Mrs Pentith, Brookfield, Beach Road, Benllech. (0248) 88613	£90-£170
Benllech	Mrs Littlemore, Golden Sands Hotel, Benllech. (0248) 852354	£60-£200
Bodorgan	Mrs Grundy, Bodorgan Estate, Bodorgan. (0407) 840235	£35-£110
Brynsiencyn	Mrs Burroughs, Hedsor Idan, Brynsiencyn. (0248) 73219	£60-£100
Brynsiencyn	Mrs Atkinson, Plas Siencyn, Brynsiencyn. (0248) 73353	£50-£110
Brynsiencyn	Mrs M Roberts, Plas Trefarthen, Brynsiencyn. (0248) 73379	£30-£130
Brynteg	Mrs Bean, Y Garnedd, Brynteg, near Benllech. (0248) 853240	£65-£100
Bull Bay	Mr Hill, Rhianfa Holiday Flats, Bull Bay, Amlwch. (0407) 830557	£34-£108
Cemaes Bay	Mr Hirst, Bay View, Bull Bay, Amlwch. (0407) 830958	£50-£140
Church Bay	Mrs Ledingham, 83 South Barcombe Road, Liverpool. (051) 7227414	£55-£100
Gaerwen	Mrs B Jones, 34 Cae Cnyciog, Llanfairpwllgwyngyll. (0248) 714824	£40-£140
Gwalchmai	Mrs Williams, Bodwina Farm, Gwalchmai. (0407) 720233	£55-£80
Gwalchmai	Mrs Parry, 6 South View, Heighington, Co Durham. (0325) 313807	£50-£110
Holyhead Mt	Mrs Ceen, Celyn, Mountain, Holyhead. (0407) 3761	£40-£85
Llanbedrgoch	Mrs Lazarus, 1 Lôn y Ffrwd, Bangor. (0248) 364098	£65-£95
Llanddaniel	Mrs Morris, Anedd Wen, Talybont, Llanrug, Caernarfon. (0286) 76075	£60-£120
Llanddaniel	Ms Bean, Plas Hen Stables, Llanddaniel Fab. (0248) 77414	£85-£150
Llandegfan	Mrs Fancett, The Mount, 1 Cae Mair, Beumaris. (0248) 810031	£100-£160
Llandegfan	Mr Freer, Gors Farm, Llandegfan, Menai Bridge. (0248) 713410	£60-£170
Llandegfan	Mrs Jones, Haulfryn, Llandegfan. (0248) 712372	£100
Llanfaethlu	Mrs Williams, Caefron, Four Mile Bridge, Holyhead. (0407) 860205	£60-£100
Llangaffo	Mrs B Jones, 34 Cae Cnyciog, Llanfairpwllgwyngyll. (0248) 714824	£40-£140
Llangaffo	Mr R Wyn Jones, Fron Deg Isaf, Llangaffo. (0248) 79696	£30-£145

When you write to any of the Anglesey addresses please use the full postal address by adding ISLE OF ANGLESEY, GWYNEDD.

Llannerch-y-medd	Mrs M Hughes, Llwydiarth Fawr, Llannerch-y-medd. (0248) 76321	£55-£200
Llansadwrn	Mrs P Irons, Bryn Hyfryd, Llansadwrn, Menai Bridge. (0248) 810239	£32-£110
Lligwy Bay	Mrs Stott, Ty'n Ffrwd, Lligwy Bay, Moelfre. (0248) 88514	£80-£80
Llynfaes	Mrs Evans, Bryn Twrog Isaf, Ty'n Lôn P.O., Holyhead. (0407) 720560	£60-£100
Malltraeth	Mrs Clarke, Min-y-Garth, Glyn Garth, Menai Bridge. (0248) 713358	£60-£120
Malltraeth	Mr Jenkins, 18 Arthog Road, Hale, Cheshire. (061) 9803253	£100-£140
Marianglas	Mr J H Owens, Plas Coch, Aberffraw. (0407) 840304	£60-£140
Menai Bridge	Mrs Tatlow, Plas Rhianfa, Glyn Garth, Menai Bridge. (0248) 713355	£66-£220
Moelfre	Mrs A Jones, Bryn Awelon, Moelfre. (0248) 88247	£55-£100
Moelfre	Mrs Jones, Ty'n Llan, Tregain, Llangefni. (0248) 722248	from £90
Red Wharf Bay	Mrs Boyle, Ty'r Ardd, Red Wharf Bay. (0248) 70550	£40-£85
Rhosneigr	Mrs Gundry, Bodorgan Estate, Bodorgan. (0407) 840235	
Rhosneigr	Mrs Cooper, Three Lanterns, 50 Ger-y-môr, Rhosneigr. (0407) 810677	£60-£80
Rhosneigr	Mrs Foord, Bodlondeb, Ty Croes, Aberffraw. (0407) 810207	£70-£130
Rhosneigr	Mrs Stanier, 44 Cherry Tree Lane, Colwyn Bay, Clwyd. (0492) 2374	£75-£130
Rhosneigr	Mrs Moore, Ton-y-Môr, Beach Terrace, Rhosneigr. (0407) 810649	£70-£170
Talwrn	Mr A Owen, Cae'r Mynydd Farm, Talwrn, Llangefni. (0248) 722882	£60-£90
Trearddur Bay	Mrs Wathan, Moranedd, Trearddur Rd, Trearddur Bay. (0407) 860324	£80-£120
Trearddur Bay	Mrs Stanier, 44 Cherry Tree Lane, Colwyn Bay, Clwyd. (0492) 2374	£80-£140
Trearddur Bay	Cliff Cottages, Trearddur Bay. (0407) 860789	£47-£197

FARMHOUSES. Self catering

The price range quoted is for a self-contained unit, per week.

The address given is the contact address, not necessarily the address of the property offered for rental.

Brynteg	Mrs Hughes, Eugrad, Brynteg, Benllech. (0248) 853372	£85-£110
Cemaes Bay	Mrs Jones, Ty Mawr, Llanrhuddlad, Holyhead. (0407) 730408	£75-£140
Llanddeusant	Mrs Jones, Clwchdermogn Farm, Llanddeusant, Holyhead. (0407) 730287	£70-£90
Llandrygarn	Mrs Roberts, Tryfil Mawr, Llandrygarn, Llannerch-y-medd. (0248) 76281	£40-£150
Llanfachraeth	J Roberts, Pen yr Orsedd, Llanfachraeth, Holyhead. (0407) 730354	£130-£170
Llannerch-y-medd	Mrs Riley, 34 Redland Crescent, Chorlton-cum-Hardy. (061) 8818045	

STATIC CARAVANS

The price range quoted is per caravan, per week.

Benllech	Golden Sunset Holidays, Benllech Bay. (0248) 852345	£80-£140
Benllech	Nant Newydd Caravan Park, Brynteg, near Benllech. (0248) 852842	£60-£130
Benllech	Strand Caravan Site, Benllech. (0248) 852181	£50-£100
Brynsiencyn	H Williams, Ty Newydd, Brynsiencyn. (0248) 73617	£60-£70
Brynteg	Ad Astra Caravan Park, Brynteg, near Benllech. (0248) 853283	£50-£100
Brynteg	Glan Gors Caravan Park, Brynteg, near Benllech. (0248) 852334	£48-£200

When you write to any of the Anglesey addresses please use the full postal address by adding ISLE OF ANGLESEY, GWYNEDD.

Brynteg	Min-y-ffrwd Caravan Park, Brynteg, near Benllech. (0248) 852607	£45-£110
Brynteg	Mrs Bean, Y Garnedd, Lôn Bryn Mair, Brynteg. (0248) 853240	£50-£90
Gwalchmai	Mrs Evans, Penybryn Uchaf, Gwalchmai. (0407) 720378	£45-£60
Llanbedrgoch	Tŷ Newydd Caravan Park, Llanbedrgoch, near Benllech. (0248) 70677	£80-£130
Llanfairpwll	Plas Coch Caravan Park, Llanedwen, Llanfairpwll. (0248) 714272	£100-£150
Llangefni	Mrs Owen, Dolmeir, Tregaian, Llangefni. (0248) 722217	£50-£65
Llangristiolus	Mrs Griffiths, Argraig, Llangristiolus. (0248) 724390	£50-£75
Llannerch-y-medd	Mrs M Hughes, Llwydiarth Fawr, Llannerch-y-medd. (0248) 76321	£50-£65
Lligwy	Capel Elen Caravan Park, Lligwy, Moelfre. (0248) 88524	£70-£110
Lligwy	Minffordd Caravan Park, Lligwy, Moelfre. (0248) 88678	£60-£125
Lligwy	Tyddyn Isaf Caravan Park, Lligwy, Moelfre. (0248) 88203	£75-£155
Lligwy	Ty'n Ffrwd Caravan Park, Lligwy, Moelfre. (0248) 88514	£80-£120
Red Wharf Bay	St David's Estate, Red Wharf Bay. (0248) 852334	£45-£250
Trearddur Bay	Cliff Caravan Park, Trearddur Bay. (0407) 860634	£35-£115
Trearddur Bay	Valley of the Rocks Caravan Park, Holyhead. (0407) 3284	£60-£120

TOURING CARAVANS AND CAMPING

The price range quoted is per pitch, per night. Some of the sites may not offer facilities for both touring caravans and camping; you are advised to check before booking.

Benllech	Mr Hewitt, Golden Sunset Holidays, Benllech. (0248) 852345	£2-£6
Benllech	Nant Newydd Caravan Park, Brynteg, Benllech. (0248) 852842	£3.50-£5.25
Bodorgan	Mr Davies, Tregof Caravan Pk, Cerrigeinwen, Bodorgan. (0407) 720315	£1.25-£3.50
Brynsiencyn	Fron Farm Caravan and Camping Park, Brynsiencyn. (0248) 73310	£2.50
Brynteg	Ad Astra Caravan Park, Brynteg, near Benllech. (0248) 853283	£2.50-£4
Brynteg	Glan Gors Caravan Park, Lôn Bryn Mair, Brynteg. (0248) 852334	£2.50-£4.50
Brynteg	Min-y-ffrwd Caravan Park, Brynteg, Benllech. (0248) 852607	£3
Cemaes Bay	Park Lodge, Caravan and Camp Site, Cemaes Bay. (0407) 710103	£2-£4
Llanbedrgoch	Tŷ Newydd Caravan Park, Llanbedrgoch, Benllech. (0248) 70677	£4.50-£6
Llanddeusant	A O Williams, Marian Farm, Llanddeusant, Holyhead. (0407) 730770	£1.50-£3
Llanfairpwll	Plas Coch Caravan Park, Llanedwen, Llanfairpwll. (0248) 714272	£5
Lligwy Bay	Minffordd Caravan Site, Lligwy Bay, Dulas, Moelfre. (0248) 88678	£1.50-£2.50
Lligwy Bay	Tyddyn Isaf Caravan & Camping Park, Lligwy, Moelfre. (0248) 88203	£3.50-£5
Marianglas	E J Pierce-Jones, Home Farm Caravan Park, Marianglas. (0248) 88237	£2.50-£4
Red Wharf Bay	St David's Estate, Red Wharf Bay. (0248) 852334	£3-£5
Trearddur Bay	Valley of the Rocks Caravan Park, Holyhead. (0407) 3284	£3-£5

PLACES TO SEE

Sea zoo	The Oyster Hatchery, Brynsiencyn. (0248) 73411. (see page 4)
Butterfly farm	Pili-Palas, Ffordd Penmynydd, Menai Bridge. (0248) 712474. (see page 3)
Farm trail	Rhuddlan Fawr, Brynteg, Benllech. (0248) 852216. (see page 14)
Museum	Museum of Childhood, 1 Castle Street, Beaumaris. (0248) 810448. (see page 32)
'Dickensian' court	Beaumaris Courthouse, Castle Square, Beaumaris. (0248) 723262 ext 269
Victorian prison	Beaumaris Gaol, Bunkers Hill, Beaumaris. (0248) 723262 ext 269
Medieval castle	Beaumaris Castle, Beaumaris.
Tudor house	The Tudor Rose, 32 Castle Street, Beaumaris. (0248) 810203
Pilots cottages	Llanddwyn Island, Newborough. (0248) 722920 ext 315
Restored windmill	Llynion Mill, Llanddeusant. (0248) 722920 ext 303
National Trust property	Plas Newydd, Llanfairpwllgwyngyll. (0248) 714795

THINGS TO DO

GOLF COURSES

Anglesey Golf Club	Rhosneigr. (0407) 810219. (see page 26)
Baron Hill Golf Club	Beaumaris. (0248) 810231. (see page 26)
Bull Bay Golf Club	Bull Bay, Amlwch. (0407) 830960. (see page 23)
Public Golf Course	Llangefni. (0248) 722193. (see page 1)
Holyhead Golf Club	Trearddur Bay. (0407) 3279. (see page 25)

LEISURE CENTRES & INDOOR SWIMMING POOLS

Amlwch Leisure Centre	Amlwch, Isle of Anglesey. (0407) 830060
Holyhead Leisure Centre	Holyhead, Isle of Anglesey. (0407) 4112
Plas Arthur Leisure Centre	Llangefni, Isle of Anglesey. (0248) 722966

SEA FISHING TRIPS

Starida	74 Maes Hyfryd, Beaumaris. (0248) 810251. (see page 11)
L B Hawkswell	Bryn Ednyfed, Amlwch Port. (0407) 831317

FISHING

Gors Farm	Llandegfan, Menai Bridge. (0248) 713410
Llyn Coron	Bodorgan. (0407) 840253

FISHING TACKLE & BAIT

Anglesey Boat Company	Gallows Point, Beaumaris. (0248) 810359
-----------------------	---

CYCLE HIRE

Star Cycle Hire	Bryn Awel, Star, Gaerwen. (0248) 714233
-----------------	---

GROUP ACTIVITY HOLIDAYS

Outdoor Alternative	Cerrig-yr-Adar, Rhoscolyn, Holyhead. (0407) 860469
---------------------	--

EXCURSIONS & SAFARIS

Island Ranger	Fresh Winds, Penrth. (0248) 70604
---------------	-----------------------------------

ROCK CLIMBING, HILL WALKS & MOUNTAINEERING (all year round)

Polaris Mountaineering	For details of the year-round programme telephone (0407) 830069
------------------------	---

WINDSURFING

Surfwind High Street, Rhosneigr. (0407) 810731 or 810317

M Webb Sanmarino, Trearddur Road, Trearddur Bay. (0407) 860642

WATERSKIING

M Webb Sanmarino, Trearddur Road, Trearddur Bay. (0407) 860642

Anglesey Diving & Watersports Centre, Soldiers Point, Holyhead. (0407) 50440

DIVING

Anglesey Diving & Watersports Centre Soldiers Point, Holyhead. (0407) 50440

SAILING & NAVIGATION

Scimitar Sailing & Navigation School Porth-y-Felin, Holyhead. (0407) 3178

Anglesey Boat Company Gallows Point, Beaumaris. (0248) 810359

WHERE TO EAT

In addition to the selection below, most hotels listed on pages 33 & 34 welcome non-residents to their restaurants.

Amlwch	Lastra Farm, Restaurant and Tea Room, Amlwch. (0407) 830906
Beaumaris	Cottage Restaurant, Beaumaris. (0248) 810319
Holyhead	Scimitar Hotel, Porth-y-Felin, Holyhead. (0407) 2094
Pentraeth	Baby Bull Eating House, Bull Hotel, Pentraeth. (0248) 70232
Rhoscolyn	White Eagle Inn (Bar Meals), Rhoscolyn. (0407) 860267
Rhosneigr	Bee Bee's Ice Cream and Coffee Bar, High Street, Rhosneigr. (0407) 810295
Valley	Bull Bach Eating House, Bull Inn, Valley. (0407) 740351

SHOPS AND GALLERIES

ANTIQUÉ SHOPS

Mona Antiqua 31 Castle Street, Beaumaris. (0248) 810203

Adam & Eve Antiques Greenway, Benllech. (0248) 852676

Steven Tiesteel 14 High Street, Llannerch-y-medd. (0248) 76745

GALLERIES

Llewelyn Gallery 7 Min-y-Don, Holyhead Road, Llanfairpwll. (0248) 715898

Tudor Rose 32 Castle Street, Beaumaris. (0248) 810203

CRAFTS

Rhoscolyn Knitwear Country Workshop, Ty'n Rhos, Rhoscolyn, Holyhead. (0407) 860861. (see page 18)

Pieces of Eight Trearddur Craft Centre, Lon St Ffraid, Trearddur Bay. (0407) 860991. (see page 21)

Brynsiencyn Pottery Old Primary School, Brynsiencyn. (0248) 73584

BOARDING FOR PETS

Bodgadfa Boarding Kennels and Cattery Penrhyd, Amlwch. (0407) 830115

SELF-CATERING LETTING AGENCIES

Roberts Holidays Bryn-y-Don, Benllech. (0248) 853838. (see page 8)

B & S Holiday Letting Strandbo, High Street, Rhosneigr. (0407) 810688 or 810731. (see page 29)

Menai Holidays Old Port Office, Port Penrhyn, Bangor. (0248) 362254. (see page 27)

Across the Menai Bridge lie the mountains of Snowdonia. Anglesey provides an ideal base for walking and climbing holidays.

Creigiau Eryri, noddfa Cymru erioed, Cadernid Gwynedd a'i bythol obaith hi.

Explorers

THE Isle of Anglesey is the perfect base for exploring the spectacular scenery of North Wales.

The Romans came to Snowdonia in search of gold, and during the last century copper and slate brought prosperity. Slate quarries are open to the public at Llanberis and at Blaenau Ffestiniog – and train enthusiasts will want to travel the little steam railways.

A day trip abroad is another of the more exciting adventures open to Anglesey's holiday-makers.

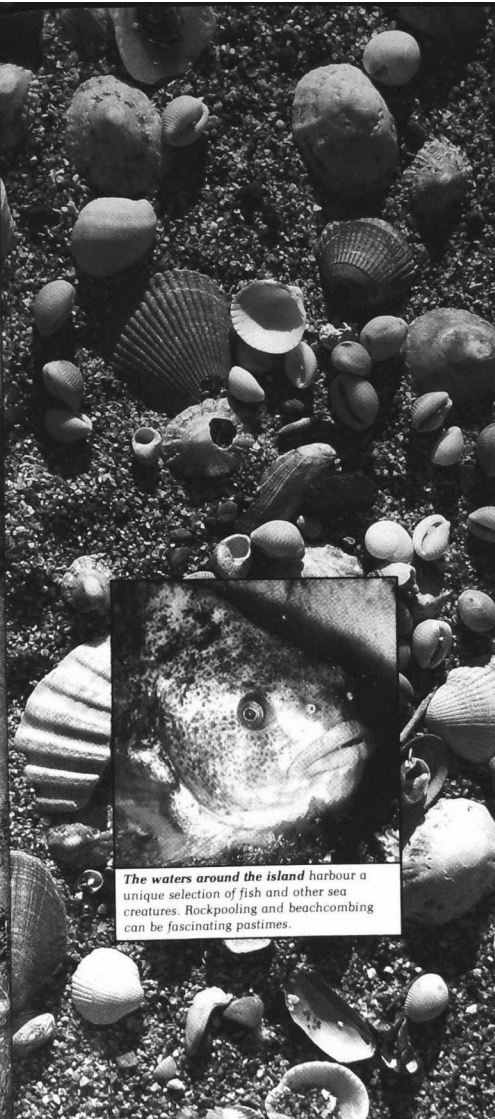
The ferry crossing to the Republic of Ireland takes less than four hours. Why not take a 24 hour excursion to the Emerald Isle?



The Snowdon mountain railway carries passengers on a breathtaking ride to the summit of the highest peak in England and Wales.

A mountain adventure ...
At daybreak retrace your path, past column and gullion, until at the end of 4419 you wade into the water and swim the narrow to the river's mouth.
Its banks wind inland to a mighty lake, where you remove, initially, An Ancient Royal Name.
What's left is shared with the rest.

(9) (10) (11) (12) (13) (14)



Gwylanod gwynion yno'n dal
I segur-droi uwch melyn draeth.



The thrift, or sea-pink, clings to rocks and
cliffs all around the Anglesey coast.

Nature's Riches

STANDING on the cliffs of Holy Island in early summer you can see puffins, guillemots, razorbills, gulls, cormorants, choughs and kestrels. Far below, the rocky shore is a breeding ground for seals. South Stack is one of the many reserves that have been created to safeguard the flora and fauna of Anglesey, and the marine life of the Menai Strait is of worldwide importance.

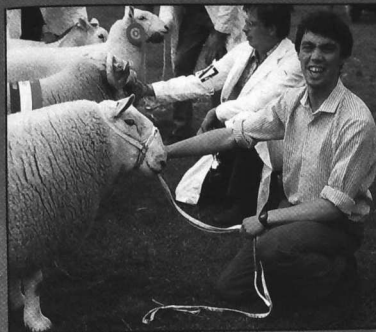
Inland there are lakes, streams, and meadowlands with rare wild flowers.

The waters around the island harbour a unique selection of fish and other sea creatures. Rockpooling and beachcombing can be fascinating pastimes.

A mid-day sea voyage ...
From river's mouth sail northeast before
You anchor off an ancient rocky shore.
Many tongues have uttered its three names.
The Welsh, the English and the Dane's.
For place of signals, saints and birds.
Our hunters need the English words.
It's very loud within these bounds you'll see.
A symbol taken for our cryptic key.



The traditional Anglesey cottage is still to be seen in all parts of the island, with its low roof of rendered slate and its whitewashed walls.



Wales is famous for its sheep farming, and competition is fierce at the Anglesey Show, held each August. 1986 will see the one hundredth agricultural show held on the island. Away from the heat of the judging ring a Welsh Black bull wears coveted awards.



Pwy a rif dywod Lliffon?
Pwy rydd i lawr wyr mawr Môn?



Môn Mam Cymru

AT Llanddeusant stands a mill: symbol of Anglesey's agricultural traditions. To the Welsh the island is the mother of Wales – 'Môn Mam Cymru' – and for centuries the harvest of her farms has nourished the mainland.

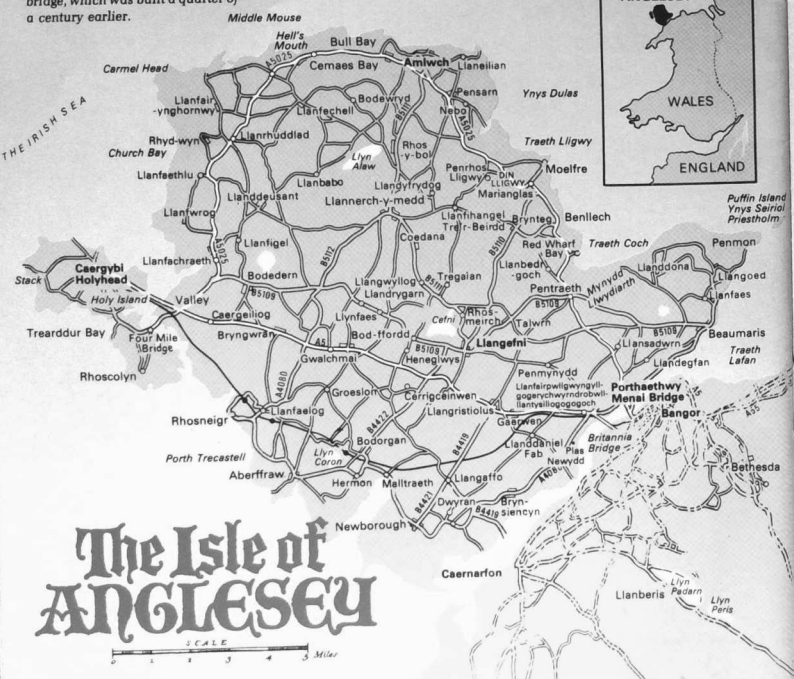
Today the island is little changed. It is still a land of villages and farms, of poetry and music, where the greater part of its people are proud to speak the Welsh language.

Croeso i Ynys Môn!
Welcome to Anglesey!

A shipwreck! ...
19 19 12 14 15 18 20 8 23 5 19 20 1
18 15 21 14 4 20 8 5 9 19 12 5 23 18
5 3 11 5 4 15 14 20 5 5 20 8 15 6
1 8 21 14 7 18 25 4 5 13 15 14 12 21
18 11 9 14 7 2 5 12 15 23 1 2 5 1
19 20 6 18 15 13 20 8 5 18 15 4 5 14
20 19 14 1 13 5 20 1 11 5 20 8 5 20
8 9 18 4 1 14 4 19 9 24 20 8



Stephenson's Britannia Bridge, opened in 1850, stands to the west of Telford's famous suspension bridge, which was built a quarter of a century earlier.



More information about holidays on Anglesey is readily available. Please write to
**Tourism Unit,
Penyrsedd House,
Llangefni,
Isle of Anglesey, LL77 7JA.**
or telephone 0248 724666
(24 hour message recording service).

Visitors to the island can obtain advice from the tourist information centre opposite the police station in Menai Bridge town. It opens every day between Easter and September, 10am-1pm and 2pm-5pm, and its telephone number is Menai Bridge (0248) 712626.



Dau lew tew heb ddim blew -
Dau 'rochr yma, dau 'rochr drew.

'Britain's Treasure Island'
is published by
Cyngor Bwrdeistref Ynys Môn
Isle of Anglesey Borough Council



We gratefully acknowledge the assistance of:
Richard Price
Cruddydd Aled Williams
Alwyn Elis
Philip Evans
National Museum of Wales
Mona Flying Club
Eileen Bradbury
Tudor Rose Antiques, Beaumaris
Jim Greenfield
Anglesey Sea Zoo
Snowdon Mountain Railway
and Philip Steele

Welsh quotations are from:
Goronwy Owen
R R Thomas
Ialwyn Ffowc Elis
Thomas Parry
Goronwy Prys Jones
Sion Pritsard Prys
and Y Bardd Cocos

Devised and produced
on Anglesey by
©MAGMA Beaumaris

Washed ashore ...
... and now, in the dimming light of
the setting sun at the end of your
pursuit, sort out your hoard and meet
your quest!

Upon this patchwork, dark and light,
Two royal hoards can stand in sight:

(13)	(4)	C	E
(1)	(5)	F	T
(11)	(12)	E	L
(8)	(3)	R	H
(17)	(6)	(2)	S
(7)	(18)	I	E
(14)	(13)	(9)	H
(16)	(10)	N	W

Fill them in from left to right.
But make quite sure they're just as white.
Read oriental style there comes to sight,
An ancient hero, a noble knight.

For the fainthearted who fell by the wayside
on their quest, a detailed solution to the hunt
can be obtained by sending a stamped
self-addressed envelope to Treasure Hunt,
Penyrsedd House, Llangefni,
Isle of Anglesey LL77 7JA.

Croeso!

