

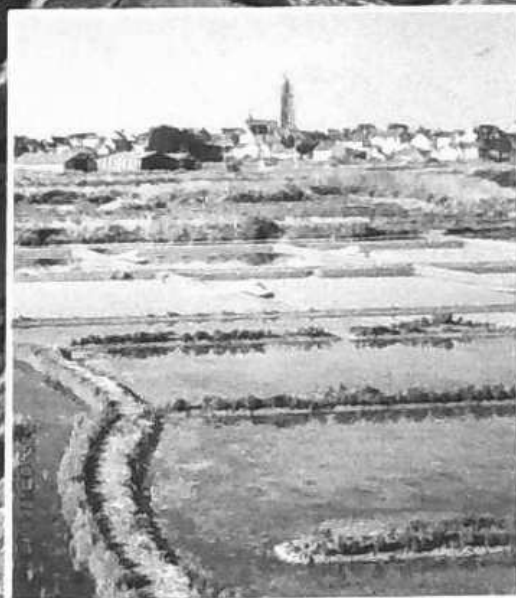
LA CÔTE D'AMOUR

AU MIDI DE LA BRETAGNE
FRANCE



ASSOCIATION TOURISTIQUE DE LA COTE-D'AMOUR ET DE LA PRESQU'ILE GUÉRANDAISE.



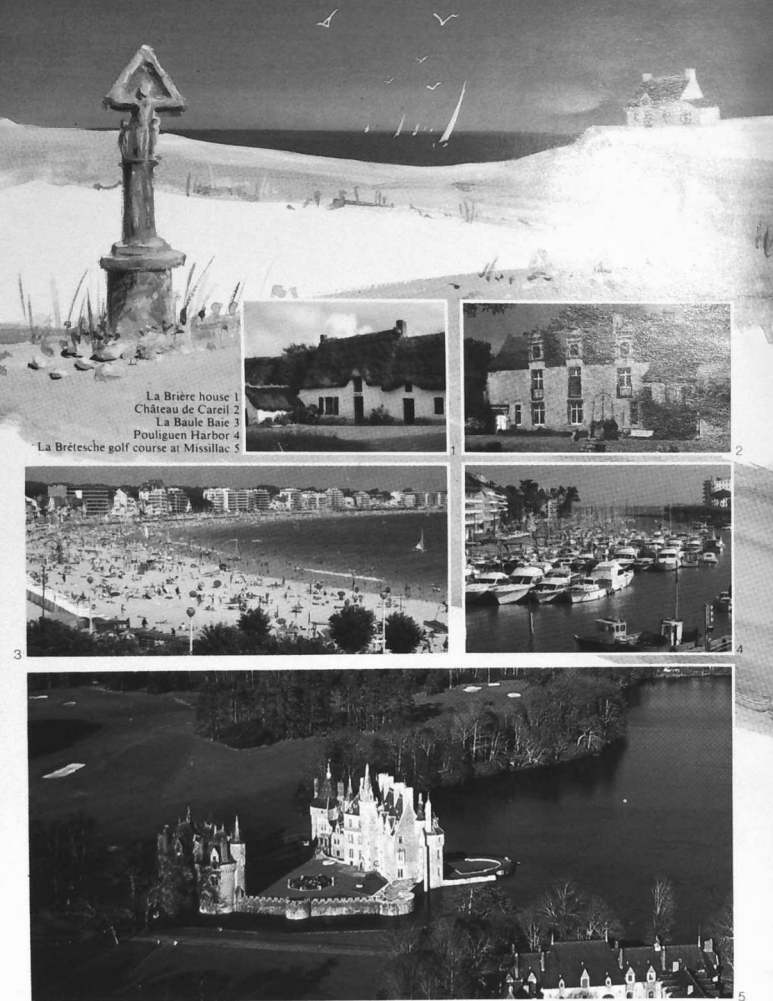


SALT MARSHES

They form an enormous grid of clay banks, the sea water decants into increasingly shallow reservoirs and is finally captured in "œillets." It's here that the water evaporates causing the salt to crystallize. The "paludiers" maintain and cultivate this fragile environment.

BATZ-SUR-MER, between ocean and marsh, founded in 945, its chapel N.-D.-du-Murié, XVth century ruins, its St-Guénolé church pinpoint the villages from a very long way off : Kervalet, Kermoisan, Roffiat.

On the COTE-D'AMOUR coast, fine sand beaches, rocky coastlines, fishing and leisure ports galore. Nearby, verdant countryside highlighted by old windmills, dotted with charming villages and manors surrounded by salt and La Brière marshes.



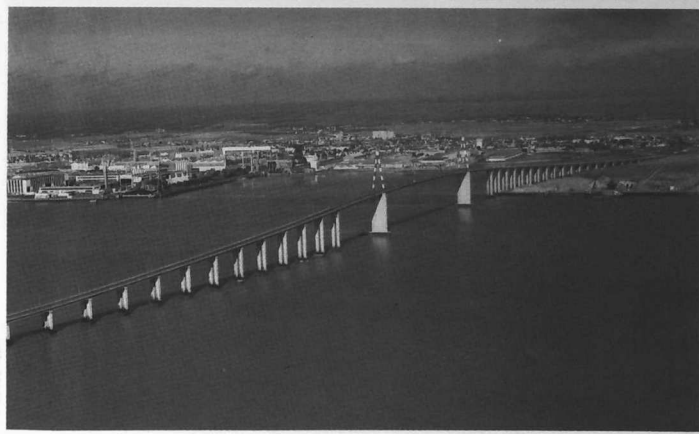
Privileged site at the estuary of the Loire

Saint-Nazaire

What to see :

- the harbour and the panoramic terrace (former submarine base),
- the monument to the commandos (1942 Anglo-Canadian raid),
- the Loire bridge (3356 m long, most imposing in Europe),
- the tropical garden (at the ocean's edge),
- the landscaped park (verdant oasis with artificial lake, tennis courts, swimming pools, omnisports room),
- Bois Joalland pond (nautical sports and fishing),
- megalithic monuments (dolmen, menhir, tumulus),
- walks (custom officers tracks),
- and numerous beaches including that of St-Marc.

OFFICE DE TOURISME. Place F-Blanchon. Tél. (40) 22.40.65



ECOMUSEE

PHOTOS ECOMUSEE

LECOSSIC

Guérande

On a plateau at the center of the peninsula of which it is the capital, the town dominates an area of salt marshes ; surrounded by ramparts surmounted by 10 towers ; one enters through four fortified gates. Part of the moat has been made into a pleasant walk. The Saint-Michel gate, dating from the XVth century, the most imposing, includes a museum ; the St-Aubin church, previously a college church was built in the XIIth and XIIIth centuries.

SYNDICAT D'INITIATIVE, Tour St-Michel
44350 GUÉRENDE. Tél. (40) 24.96.71



5 km into the sea

Le Croisic

Historical, touristic and gastronomic town.
Fishing and leisure port.

OFFICE DE TOURISME : Place de la Gare. 44490 LE CROISIC. Téléphone (40) 23.00.70



Walk along the picturesque quays in the narrow streets lined with XVth, XVIth, and XVIIth century houses or in the beautiful greenery of the parks. On the Trehic jetty, facing the open sea, watch the fishing boats leave for the open sea and each day the shellfish, lobster, crayfish, crab and shrimp boats return to port. But perhaps, you would prefer to go line-fishing (bass, pollack, bream) before you visit the aquarium and marine museum or enjoy a delicious meal of shellfish or Brittany pancakes.



La Turballe

OFFICE DE TOURISME, Place Charles-de-Gaulle
B.P. 40, 44420 LA TURBALLE. Tél. (40) 23.32.01



Join in the fun
at the ~~at~~ leading sardine port
on the Atlantic coast,
leisure or seaports on 8 km of beaches.



Piriac

Artisan fishing port, heritage of successive civilisations ; its
architecture still lends its personality to these privileged locations :
XVIIIth century wood framed houses, vestiges of a Protestant temple."

OFFICE DE TOURISME, 44420 PRIAC. Tél. (40) 23.51.42



PHOTO LENORI

Natural havens, the ports of Piriac-sur-Mer and Lerat offer holiday-makers all necessary facilities for mooring.
Standing or fly fishermen will find a wide variety of shellfish and fish along more than 10 km of coastline.

LA BAULE *International beach, family and sporting resort.*

Loire Atlantique



OFFICE DE TOURISME

Télex 710 050. B.P. 161. 44504 La Baule. Téléphone (40) 24.34.44.

Pornichet

OFFICE DE TOURISME. Tél. (40) 61.08.92



- floral gardens,
- horse racing track (16 day or evening meets),
- its large deep water harbour providing a welcome all year round for holiday makers and their boats (from 6 to 12 meters) where Marc Pajot moors his boat, as do many other champions. (Read : from 6 to 25 meters)



PHOTO LECOSSIC

Le Pouliguen

This is the port of La Baule and the Cote d'Amour, a fishing and leisure port which welcomes a veritable fleet each season.

OFFICE DE TOURISME : Port Sternitz. 44510 LE POULIGUEN. Téléphone (40) 42.31.05.



DOREY AFAP



DERUELLE

- its fine sand BEACH,
- its incomparable BAY, the bay of love,
- its fishing and leisure PORT with the promenade and shops,
- its 6 hectare WOOD in the heart of the country,
- its WILD COASTLINE, grottos, creeks, rocks that you can visit along the "Sentier des Douaniers",
- its Penchâteau SAILING SCHOOL.



La Brière

SYNDICAT D'INITIATIVE BRIERON, Maison du Sabotier, rue des Ecluses.
44410 LA CHAPELLE-DES-MARAIS. Tél. (40) 66.85.01

Intermingled water and land ; if you wish to get away from the beaches and discover another dimension to the country where you are staying, visit La Brière. Outstanding ecological area (7000 ha of marshes, undivided since 1461) ; come

simply and openly and visit this area and its inhabitants. We shall be pleased to welcome you and hope you will share and have your friends share the love we feel for our country.



Cliche ARTAUD Freres Editeurs

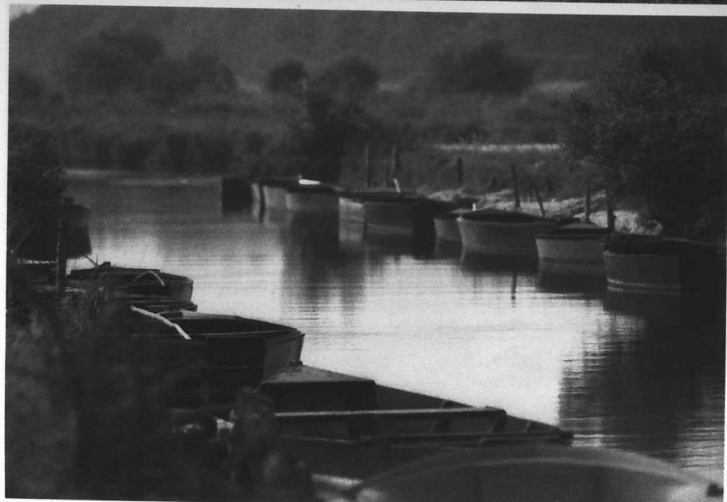


PHOTO LECOSSEC

Les Musées

- Brière : the village of Kerhinet, the animal park, the "Maison de l'Eclusier," the brierronne thatched cottage and the "Maison de la Mariée."
- Saillé : The "Maison des Paludiers" (salt marsh workers' house).
- Le Croisic : Marine aquarium and naval museum.
- Guérande : Regional Museum of the Porte Saint-Michel.



PHOTOS B. VOISIN



Les sports

La Côte-d'Amour, a meeting place for sportsmen.

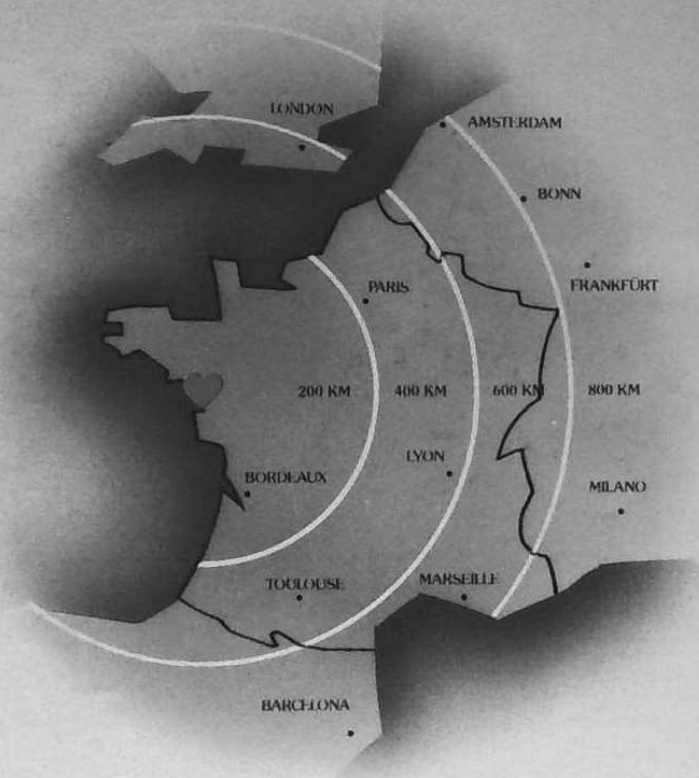


- More than 100 tennis courts.
- 4 horse riding clubs.
- 2 18-hole golf courses.
- Numerous sailing schools.
- But also, firing ranges, squash courts, aqualung diving and deep sea fishing.

Major international get-togethers :

- La Baule-Dakar.
- Multicup.
- Catamaran and windsurfer festival.
- 83 tennis national, 78 French golf open.
- International show jumping.
- Car rallies, etc.

LA CÔTE D'AMOUR



BY ROAD

4 to 5 hours from Paris, 35 minutes from Nantes.

BY RAIL

4 to 5 hours from Paris on the Paris-Le Croisic line.
Lyon-Le Croisic link.

BY AIR

Regular flights to Montoir/St-Nazaire
and Nantes/Château-Bougon airports.