
Welcome to

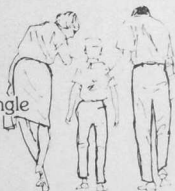
SCHULL Co. Cork



A visitor's guide to Schull, Ballydehob, Goleen & the Mizen

Barnett's of Schull

— For Ladies, Gents & Kids —

- Finest Choice Best Prices**
- | | | |
|---|---|--|
| <ul style="list-style-type: none"> ■ Levi's ■ Ecco ■ Broga ■ Tailteann ■ Bermuda Triangle ■ Nike ■ Santorini ■ Speedo |  | <ul style="list-style-type: none"> ■ Casualwear ■ Knitwear ■ Footwear ■ Rainwear ■ Beachwear ■ Household |
|---|---|--|

OUR SHOP IS WORTH A VISIT!

Established over 50 years.
Daily Laundry & Ironing Service
Hot Showers, Ice per Bag

Open Mon. - Sat. (7 days June, July & Aug.) Tel: 028-28286

THE BLACK SHEEP INN



FULLY LICENCED GUESTHOUSE

B/B Full Board Partial Board

RESTAURANT: Fully Licenced Open Easter - 30th September
A La Carte Menu. Full Wine List

Fillet Steaks and Seafood our speciality

LOUNGE BAR: Soups, Sandwiches and Salads

Seafood Specials Served 11 a.m.—6 p.m.

Entertainment — Spontaneous & Organised

MAIN STREET, SCHULL

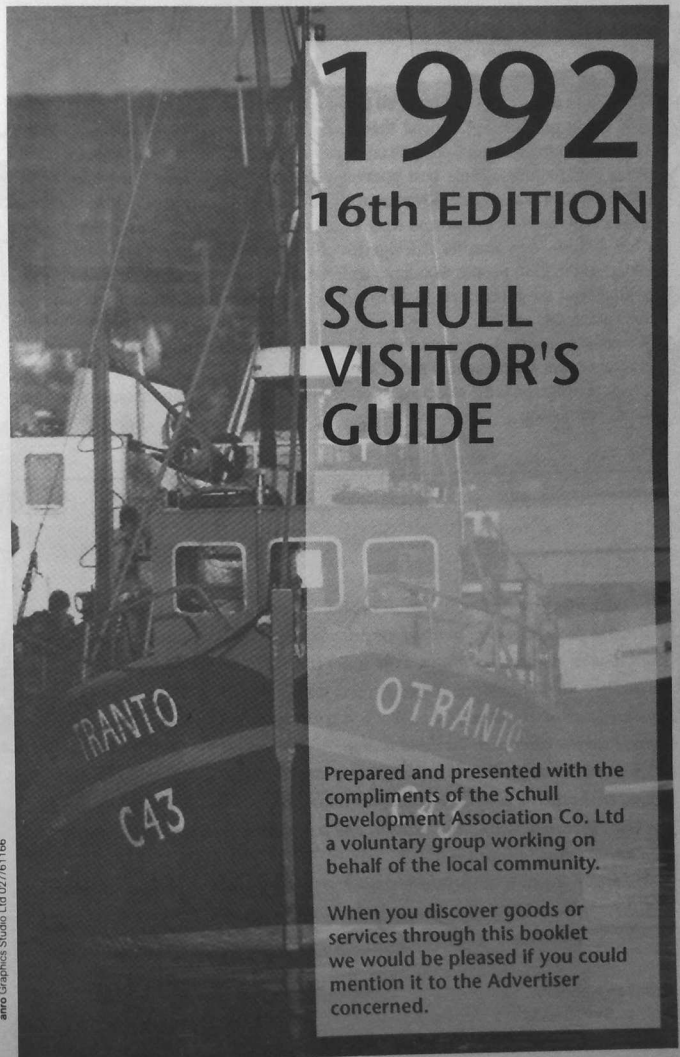
Deep Sea Angling Trips Arranged

☎ 028/28203

1992

16th EDITION

SCHULL VISITOR'S GUIDE



Prepared and presented with the compliments of the Schull Development Association Co. Ltd a voluntary group working on behalf of the local community.

When you discover goods or services through this booklet we would be pleased if you could mention it to the Advertiser concerned.

ACKNOWLEDGEMENT

We wish to thank most sincerely all those whose efforts have made the publication of this guide possible. A special thanks to the advertisers who made the funding available: the kind visitors who have taken the time to give Schull and its neighbouring villages and countryside the best possible references: the Sailing Club who helped sponsor the Schools' Regatta advertisement; to Martin O'Sullivan who kindly gave us a selection of his photographs and who helped organise the space sales; Mary England for her assistance; to Jennifer Attridge for all her help during the publication of the booklet; to the kind people who have undertaken distribution of the booklet beyond the villages of the Mizen: and to Anro Graphics who designed, printed and generally nursed along this project.

We cannot accept any responsibility for mis-statements or changes in information that might occur subsequent to publication.

Cover photograph is the sole possession of Martin O'Sullivan, and should not be used without permission.

I had a wonderful time in Schull in August, and now in the cold of November I can still feel the warm glow of my friends' hospitality. Something I really enjoyed was wandering through the town itself: it's a delightful place, with a distinctive identity marked by good food, good drink and good talk. It's very 'modern', in the best sense, yet there is a sense of leisure, of easy-goingness, that represents the essence of civilised living.

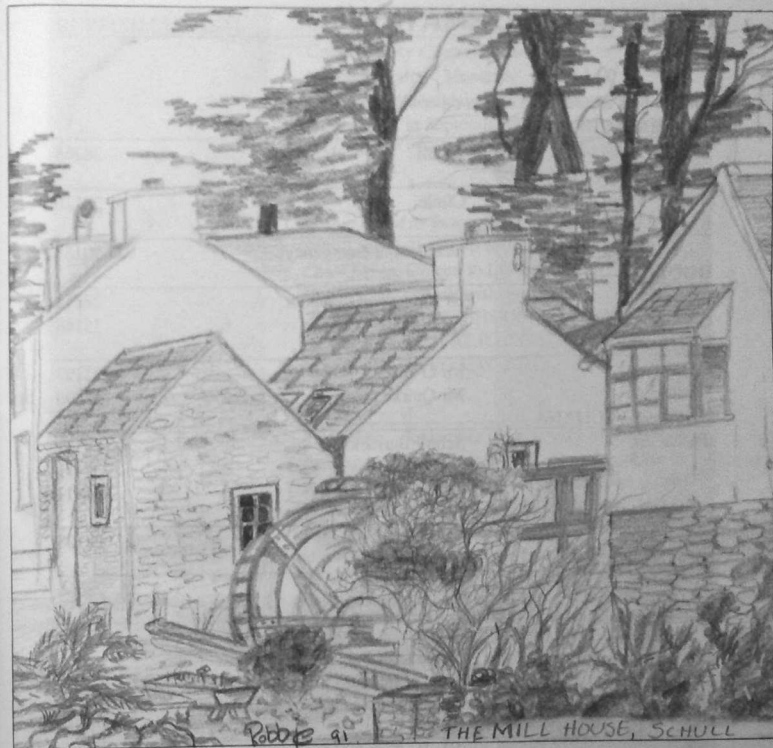
I was in Schull during the sailing races, and my mind is still full of beautiful boats, enthusiastic people, a helicopter taking the young and the young-at-heart for trips between Schull and heaven, and a wonderfully happy atmosphere. Do you know what? I loved it.

My best to you - and to Schull.

Sincerely,

Brendan Kennelly

Brendan Kennelly



A pencil drawing of "The Mill House" by Robbie Krawczyk, Student at the VEC College here. Printed from the 1992 'Faroige' Calendar.

Having arrived in Schull after a very busy week with the duties as the Calor Housewife, I must say it was the most relaxing time I've spent in a long while. The peace, quietness and no telephone added to the charm and beauty of Schull.

Elaine Murphy

Elaine Murphy, Calor Housewife '91

GENERAL INFORMATION

All numbers are 028 area unless otherwise stated.

FIRE BRIGADE	Schull	28268
SCHULL HOSPITAL	Clinic	28120
BANTRY HOSPITAL	(accident & emergency)	027 50133
DOCTORS		
Schull	Dr Laurence O'Connor	28311
Goleen	Dr Brian O'Connell	35148
DENTISTS		
Skibbereen	Mr O'Brien	21197
Skibbereen	Mr Quirke	21690
GARDA SIOCHANA (POLICE)		
	Schull Barracks	28111
	Ballydehob	37111
	Goleen	35111
PHARMACY	Main Street, Schull	28108
CREDIT UNION	East End, Schull	28666
BANKS		
	Allied Irish Bank - Schull	28132
	Allied Irish Bank - Ballydehob	
	Bank of Ireland - Skibbereen	
	Trustee Savings Bank - Skibbereen	
EARLY CLOSINGS		
	Schull - Tuesday	
	Bantry and Ballydehob - Wednesday	
	Skibbereen - Thursday	
TAXI SERVICE	George Swanton	37127
LIBRARY		
	Opposite the AIB Bank	
	Open Tues to Thurs 4-6 pm	
	Friday 6 - 8 pm	
	Sunday 11.30am - 1.30pm	
POST OFFICE	Newman's - Open Mon.-Sat. <i>half day Tues.</i>	

RUBBISH DISPOSAL

Cork County Council Dump

Opening Hours: Mondays 9.00 - 1.00

(except Bank Holidays - then Tuesdays)

From June 1 to September 30 at 9.00 - 4.00

Charges: None for private cars

£3 for car and trailer

£5 for tractor trailer -

but could be more, according to volume

Schull and Ballydehob collection THURSDAY

Crookhaven, Goleen to Lowertown MONDAY

House renters check with agents for Saturday disposal.

ON NO ACCOUNT SHOULD ANYONE

DUMP RUBBISH AT ILLEGAL DUMP

SITES, CROSS ROADS, ETC.

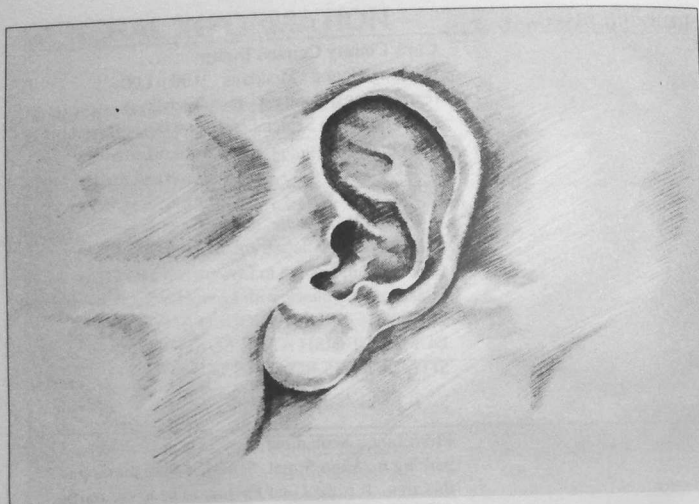
PARKING

From June - September there is very limited parking in Main Street, Schull. Avoid parking in this area. It is the Guard's duty to keep the traffic flowing and they will TICKET OFFENDERS. Park at the East End Car Park, some approach roads and areas devoid of yellow lines.

THE RESIDENTS AND THE DEVELOPMENT ASSOCIATIONS WORK HARD AT KEEPING THEIR AREA TIDY. WE ASK OUR VISITORS WHO ENJOY THE VILLAGES AND COUNTRYSIDE OF WEST CORK TO KEEP IT TIDY AS WELL.

CHURCH SERVICES

	Sat	Sun	Extra Sunday Service
CATHOLIC SERVICES:			
SCHULL	8.00p.m.	10.30a.m.	12.00 noon June-Aug
BALLYDEHOB		8.30a.m. & 11.30a.m.	
DUNBEACON		9.30a.m.	
LOWERTOWN		10.30a.m.	
GOLEEN	8.00p.m.	12 noon	9.00 a.m. June - Aug
CHURCH OF IRELAND:			
SCHULL		10.00a.m.	
THE ALTAR, TOORMORE		11.30a.m.	
BALLYDEHOB		11.30a.m.	8.00a.m. April - Sept
	only Compline		9 p.m. July - Aug
CROOKHAVEN	July & Aug.	8.30p.m.	



JUST ONE OF OUR FINELY TUNED PARTS

The ability to listen. It's what makes a success stay successful. To produce a quality product, you need to be flexible, you need to be able to adapt to a constantly changing environment. You need to listen.

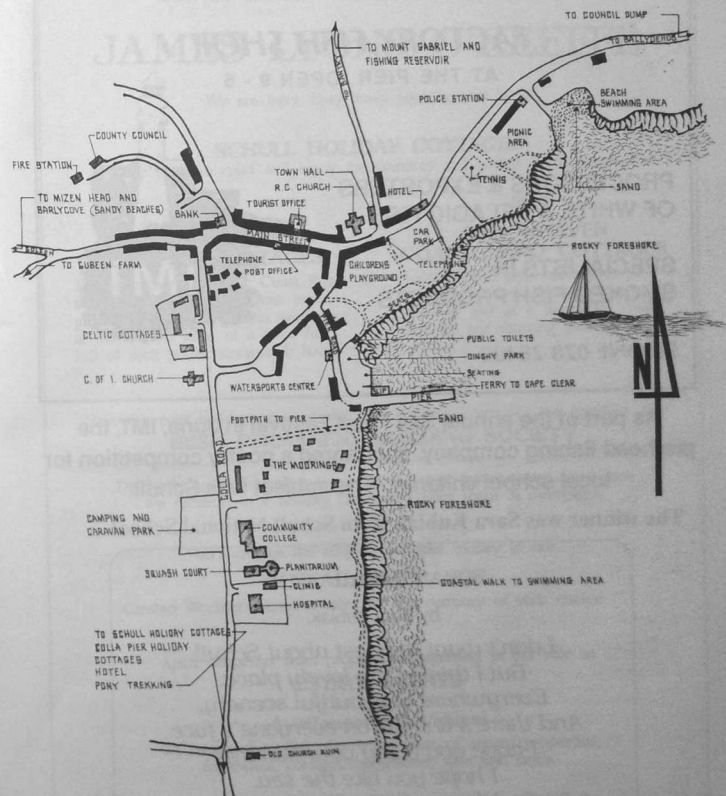
It's all about finding out what customers want - not telling them what they need. Catering to today's tastes while anticipating tomorrow's trends. Listening.

1992 sees Ford celebrate its 75th birthday in Ireland. We've spent the time well, the range of products you demand, the dealer network and after-sales care you expect. Because we're tuned in.



Everything we do is driven by you.

SCHULL VILLAGE



THE RESIDENTS AND THE DEVELOPMENT ASSOCIATIONS WORK HARD AT KEEPING THEIR AREA TIDY. WE ASK OUR VISITORS WHO ENJOY THE VILLAGES AND COUNTRYSIDE OF WEST CORK TO KEEP IT TIDY AS WELL.

International Marine Trading (Waterford) Ltd.

FACTORY FISH SHOP

AT THE PIER, OPEN 9 - 6

PROCESSORS & EXPORTERS
OF WHITE & PELAGIC FISH

SPECIALISTS IN
SMOKED FISH PRODUCTS

PHONE 028 28400



As part of the annual Sea Food Festival in June, IMT, the pierhead fishing company, sponsored a poetry competition for local school children. The subject was Schull.

The winner was Sara Kubiak from Schull National School.

Schull

by Sara Kubiak.

*I don't want to boast about Schull,
But I think it's a lovely place.
Everywhere is beautiful scenery,
And there's a smile on everyone's face.
I hope you enjoy your summer,
I hope you like the sea,
I wish you all the best of luck,
Schull is a brilliant place to be.
When the summer is over,
I hope you will come back next year.
I hope you'll take lots of memories home,
Remember that Schull will always be here.*

At 48 Main St. in the sunny West Cork village of Schull
under the umbrella - metaphorically speaking! - of

JAMES LYONS O'KEEFFE

We are busy, busy, busy booking you in at

SCHULL HOLIDAY COTTAGES

Where you can relax and enjoy the comings and goings in the harbour

or at

or at

COLLA PIER COTTAGES

Toddle further along the Coast Road
and you will happen on this other
grouping of holiday homes snuggling
at the water's edge in a cove full
full of rock pools, streams & boats.

**CROOKHAVEN
COASTGUARD COTTAGES**

located on a promontory in that
harbour renowned for it's sandy
beaches and as a haven for trans-
atlantic and cruising yaughtsmen.

However, your holidays are not our only concern - you see we represent the

IRISH PERMANENT BUILDING SOCIETY

- the biggest in this small Isle of ours -

Discreetly and efficiently we can handle your investments - and dare
we mention in a holiday brochure - your loans & mortgages!

Let's change the subject and your money in our

BUREAU DE CHANGE

Cambio Wechsel - keenest rates for the currency of your choice.

Apart altogether from property management in our role as

ESTATE AGENTS

as

Auctioneers & Valuers

We handle the sales of a wide range of coastal properties,
farmhouses, cottages, bungalows, sites and lands.

Having secured your dreamed of property we can call the

ROYAL INSURANCE GROUP

and keep you covered!

pop in or 'phone us on 028 28122

The advantages are numerous.

ARUNDEL'S BAR

Phone 028-28112

Two Swallows Outside,
More Inside!

We also sell Coal, Turf, Heat Logs and Briquettes

GERARD MINIHADE

ELECTRICAL CONTRACTOR

All types of Installation & Maintenance
INDUSTRIAL DOMESTIC
COMMERCIAL & AGRICULTURAL

SCHULL, WEST CORK.

TEL.: 028/28149

On The Sunny Side of the Street



Griffin's Bar

☎ 028-28133

Call in for a Pint and game of Darts * Occasional Ballad Sessions
Bus Eireann Depot

CALL FOR A STYLE AND GO WITH A SMILE
CALL TO MARY'S



HIS'N HERS Hair Stylist, Pier Road

Hours of Business - Tues, Wed, Thurs & Sat 9.30 a.m.-6 p.m.
Fri 9.30 -7.30 p.m.
House calls by Appointment

PHONE 28113



PLANETARIUM

Located half a mile down the Colla Road in the grounds of the Community College.

With its usual enthusiasm Schull has achieved singularity in its boast of being the first place in the Republic of Ireland to harbour a planetarium. To see the star studded skies of South West Ireland is more than a delight. Recognising the outline of well known constellations such as Orion or the Plough, waiting for shooting stars or satellites moving overhead brings pleasure to a late night out. No expensive equipment is needed at all. The unaided eye and sometimes a pair of binoculars is all that is necessary to explore the night sky with full pleasure. At a visit to the planetarium, the same delightful night sky can be enjoyed from a comfortable chair in a heated room rather than in the cold outside. The starshows guide you through the universe and show you the mysteries of the cosmos around us, so that later on you still know what to look for on a late night out.

In summer time, the planetarium is open five days a week, from 11 am till 1 pm and 2 pm till 8 pm. Everyone can come and have a look around. Demonstration programmes and simulations are shown all day and general information is readily available, from the first space rockets to the Space Shuttle, from the Babylonians to the science of astronomy as we know it today.

Public shows take place on Tuesday, Thursday and Saturday at 7 pm and special shows are advertised. Any party can book its own private show for £25. Join with a few friends together and you will find this a good deal. The planetarium is open most of the year. Days of opening and times of shows vary according to the seasons. Check local publicity or telephone the Planetarium (028/28552).

The silence that surrounds me penetrates my inner eye from where my most personal questions find momentary answers on canvas. In Schull's surroundings, I'm in touch, as never before, with work and the best of friends.

Morton Lichter

Morton Lichter, Painter and Playwright

SCHULL COMMUNITY COLLEGE



SUMMER PROGRAMME

July 6 - 10: FASTNET INTERNATIONAL SCHOOLS REGATTA

An international youth dinghy sailing event.

July 13 - Aug. 28: Summer Sailing School.

Planetarium - Hours of Opening

March 1 - Easter: Open Saturdays - 11 am - 1 pm & 2 pm - 5 pm
Star Show - 4 pm

April 22 - June 20 incl:
Open Wednesday, Friday, Saturday - 11 am - 1 pm & 2 pm - 5 pm
Star Show Saturday - 4 pm

June 23 - August incl:
Open Tuesday thru Saturday - 11 am - 1 pm & 2 pm - 8 pm
Star shows Tuesday, Thursday, Saturday - 7 pm

September 2 - October 3 incl:
Open Wednesday & Saturday - 11 am - 1 pm & 2 pm - 5 pm
Star Show Saturday - 4 pm

October 10 - November 14 incl:
Open Saturday - 11 am - 1 pm & 2 pm - 5 pm
Star Show - 4 pm

November 15 - December 26 - Closed

Open on December 27, 29, 31 & January 2:
2 pm - 5 pm
Star Show each day - 4 pm

Visitors are welcome to visit the Planetarium free of charge during opening hours.

Star Show Admission Charges: Adults: £2.50
Children: £1.50

Special shows and private party bookings by arrangement with the Director.

Schull Community College -

Phone: 028/28315
Fax: 028/28467

Planetarium -

Phone: 028/28552



MODERN LUXURY, SELF CATERING
SPACIOUS HOUSES & APARTMENTS
ON MATURE GROUNDS
TO THE SEA, ADJACENT TO
SCHULL PIER OVERLOOKING OWN

SECURE MOORINGS.
DETACHED HOUSES,
FEATURE CONSERVATORIES
AND ALL MODERN
CONVENIENCES.

OPEN ALL YEAR ROUND.

TELEPHONE 027/50525
FAX 027/50525



**West Cork Natural
Cheese Ltd.**

Makers of Gabriel - Desmond
& Raclette and
Old Fashioned Butter

GOURMET FONDUE
We cater on request

Our Farmhouse Plant is
located in Dereenatra between
the Creamery & the Pier

Visitors welcome
May thru Sept. 10a.m. til 2p.m.

BILL HOGAN
Tel. 028/28593 Fax: 028/28573

MICHAEL LEVIS
Furniture Manufacturer

Specialists in
**QUALITY
FITTED KITCHENS
ALCOVES
BEDROOM FURNITURE
AND JOINERY.**

YOU NAME IT - IF IT'S TIMBER

WE MAKE IT!

MEENVANE SCHULL
PHONE (028) 28373

**NEW EXERCISE
TO MUSIC
CLASSES**

Take time
out for yourself

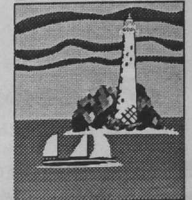
FOR AGES - 12 to 101!
Beginners Welcome &
Bring a Friend!

HAVE FUN! GET FIT!
A NIGHT OUT! MEET FRIENDS!
WORK AT YOUR LEVEL

For Details -
CALL JACKI FLYNN 028-35357

MAIN ST. SCHULL TEL: 028-28393

THE FASTNET



RESIDENCE

MODERN
self-catering
1, 2 & 3 bedroom
maisonettes & apartments
with fully fitted kitchens,
bathrooms, heat & TV for
year round holidays.

PHYLLIS O' MEARA



**FASHION
TRADITION**

MAIN STREET, SCHULL
for original designs
in superb knitwear.

FACTORY SHOP
at Lissacaha, Schull
for discontinued lines
& great bargains.

TEL: 028-28356 FAX: 028-28508

**TRAG
KNITWEAR LTD.**
TRAGUMNA, SKIBBEREEN.

FASHION ■ CRAFT ■ KNITWEAR

FACTORY OUTLET SHOP

Hand & Machine Knit Aran Sweaters.

Fashion Department

Childrens Department

LARGE BARGAIN BASEMENT

SHOP NOW OPEN AT

Main Street, Schull
Phone (028) 21750

**MOUNTAIN
& TOURING
BIKES**

For Hire

From 10 - 12 a.m.

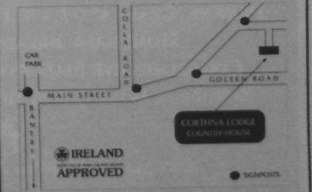
Cotter's Yard
Main St., Schull
Phone 028-28165

CORTHNA LODGE
COUNTRY HOUSE

Schull, Co. Cork. Phone 028 28517



All Rooms En Suite
Private Car Park
Large Surrounding Gardens

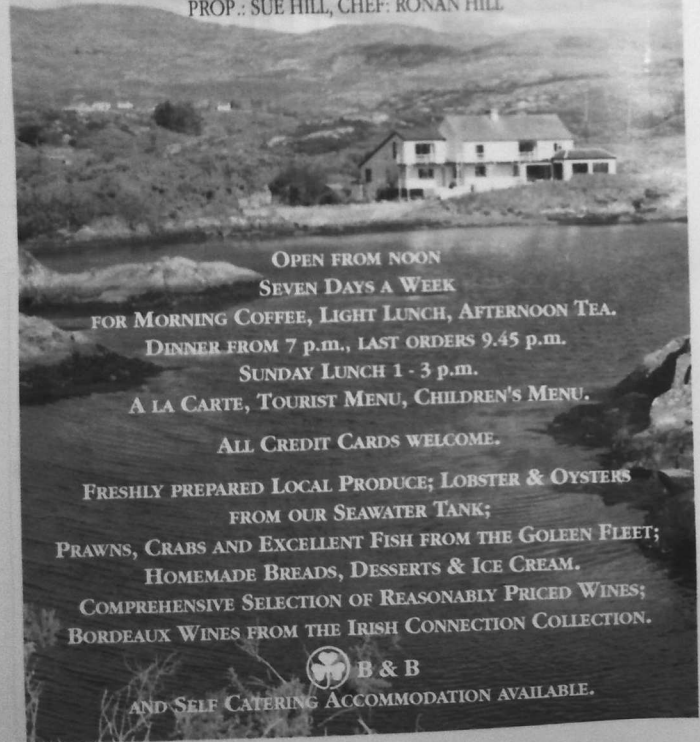


IRELAND
APPROVED



Heron's Cove
RESTAURANT

GOLEEN HARBOUR, WEST CORK. PHONE 028 35225 FAX 028 35422
PROP.: SUE HILL, CHEF: RONAN HILL



OPEN FROM NOON
SEVEN DAYS A WEEK

FOR MORNING COFFEE, LIGHT LUNCH, AFTERNOON TEA.

DINNER FROM 7 p.m., LAST ORDERS 9.45 p.m.

SUNDAY LUNCH 1 - 3 p.m.

A LA CARTE, TOURIST MENU, CHILDREN'S MENU.

ALL CREDIT CARDS WELCOME.

FRESHLY PREPARED LOCAL PRODUCE; LOBSTER & OYSTERS
FROM OUR SEAWATER TANK;

PRAWNS, CRABS AND EXCELLENT FISH FROM THE GOLEEN FLEET;
HOMEMADE BREADS, DESSERTS & ICE CREAM.

COMPREHENSIVE SELECTION OF REASONABLY PRICED WINES;
BORDEAUX WINES FROM THE IRISH CONNECTION COLLECTION.



AND SELF CATERING ACCOMMODATION AVAILABLE.

WHERE TO DINE

- | | |
|-------------------------------------|--|
| Adele's Coffeeshop | Main Street, Schull
All Day menu |
| The Altar Restaurant | Toomore Tel: 35254
Lunch/A la Carte |
| Andy's | Main Street, Schull Tel: 28597
All Day Menu |
| Annie's | Main Street, Ballydehob Tel: 37292
Lunch/Dinner/A la Carte |
| Ard na Greine | 1 mile west Schull Tel: 28181
Lunch/Dinner/A la Carte |
| Ard na Phuca | Toomore Tel: 35107
Vegetarian, local seafood |
| Barley Cove Beach Hotel | Barley Cove Tel: 35234
Bar Food/Dinner/A la Carte |
| Black Sheep Bar/Restaurant | Main St., Schull Tel: 28203
Seafood/A la Carte |
| Blair's Cove | Durrus Tel: 027 61127
Dinner/ Sunday Lunch |
| Bunratty Inn | Main St., Schull Tel: 28341
Lunch/Extensive Bar food menu |
| Colla House Hotel | Colla Road Tel: 28105
Dinner/ A la Carte |
| The Courtyard Bar/Restaurant | Main St., Schull Tel: 28209
All Day Menu/Dinner/A la Carte |
| East End Hotel | Main St., Schull Tel: 28101
All Day/Dinner/A la Carte |
| Eats | Main St., Schull
Pizza Take-Away |
| Greyhound Inn | Main St., Schull Tel: 28320
Bar Food |
| Heron's Cove | Goleen Tel: 35225
All Day Menu/Children's/Dinner/A la Carte |
| Irish Cottage | Heir Island Tel: 38102
Dinner (now with wine licence) |
| Journey's End | Crookhaven Tel: 35183
A la Carte |
| Marconi House | Crookhaven Tel: 35168
A la Carte |
| O'Driscoll's Restaurant | Crookhaven Tel: 35201
Dinners |
| Teach Dearg | Ballydehob Tel: 37282
A la Carte (vegetarian specialities) |
| Welcome Inn Restaurant | Crookhaven Tel: 35319
A la Carte |

One mile to the west of SCHULL

Ard na Greine Inn

BAR



Beer Garden
Bedrooms with Bathrooms en Suite
No Parking Problem
Props.: Frank & Rhona O'Sullivan · Phone 028 28181

GUBBEEN

GUBBEEN HOUSE / DAIRY

1 mile from Schull on the Ard na Greine Hotel Road.

Home of the well known Farmhouse Cheese
'GUBBEEN'.

Visitors are welcome during the mornings
at Cheese Making. Times 10.30 - 12.30.
If parties of more than 4 please call for appointment.

ALL INQUIRIES: TOM & CIANA FERGUSON 028-28231

RENT A CAR

DAILY FROM £ 21.94

BARRY'S OF BANTRY

That's
PRACTICAL
car & van rental

phone 027 - 50589

H EGARTY O M B E U I L D E R S BARNETT LTD.



GENERAL BUILDING CONTRACTOR
RENOVATIONS AND EXTENSIONS

SCHULL CO. CORK
PHONE: 028 - 28446 / 28153

WHERE TO STAY

Bed & Breakfast

The Altar	Toormore, Schull	35254
Ard na gCrann (Helen Robson)	Lowertown, Schull	28676
Ard na Greine Inn	1 mile west of Schull	28181
Barley Cove Beach Hotel	Barleycove	35234
Beacon View (Nora Norris)	Meenvane, Schull	28348
Black Sheep Inn	Main St., Schull	28203
Blair's Cove	Durrus	027 61127
Cape View (Marion Hegarty)	Corrydorrigan, Schull	28446
Central (O'Donovans)	Main Street, Schull	28227
Cluain Mara (Mary O'Driscoll)	North Harbour, Cape Clear	39153
Colla House Hotel	Colla, Schull	28105
Corthna Lodge	Schull, Co. Cork	28517
Dun an Oir (Mary Coughlan)	Ballydehob	37272
East End Hotel	Schull	28101
Fortview Farmhouse (Violet Connell)	Toormore, Schull	35324
Greyhound Bar	Main Street, Schull	28320
Heron's Cove	Goleen	35225
Hillside (Marie Macfarlane)	Meenvane, Schull	28248
Jenny's Bed & Breakfast	Lowertown, Schull	28205
Kitty Kingston's	Main St., Ballydehob	37474
Marconi House	Crookhaven	35168
Pinegrove Farm (Margaret O'Donovan)	Leamcon	28261
Radharc na Mara (Mary O'Callaghan)	Beakeen, Schull	28368
Sea View (Noreen Levis)	Coorydorigan, Schull	28373
Stanley House (Nancy Brosnan)	South Schull	28425
Station House (Jim Mc Carthy)	Schull	28546
Sunnybank (Helen Hurley)	Corrydorrigan	28174
Tra an mBad (Frances Bedwell)	Derreenatra, Schull	28329
The Variety (Ted O'Regan)	Main St., Schull	28334
White Castle Cottage (Dorothy Holt)	Ardintenant, Schull	28528

Self-catering complex

Barley Cove Villas	Barley Cove	35234
Bijoux Holiday Apartments	Schull	28201
Blair's Cove Apartments	Durrus	027 61127
The Bungalow	Barleycove	35265
Celtic Holiday Cottages	Schull	28594
		01 691000
		28122
Colla Pier Cottages	Schull	28219
Crewe Bay Farm (Mary Kingston)	Schull	28393
Fastnet Residence	Schull (Main Street)	37353
Forge Apartments	Ballydehob	35225
Heron's Cove	Goleen	35344
Les Mouettes (Crookhaven Apts.)	Crookhaven	027 50525
The Moorings	Schull	28122
Schull Holiday Cottages	Schull	35319
Welcome Inn	Crookhaven	

Celtic Cottages

Colla Road, Schull Tel: 028-28594

Bookings: Nora M. Wycherley
Camp Hill, Kinsale, Co. Cork
Tel: 021-772370 Fax: 021-774482

OPEN ALL YEAR

Located in Village - 200 meters from Schull pier.
4 Different styles - 2, 3 & 4 bed roomed Cottages
equipped for 5, 7 & 8 people respectively.

Detailed Price List 1992.

4 Jan - 9 May 3 Oct - 19 Dec	W'End/ M'Wk IRE	Week IRE	Weekly (Sat. to Sat.)				
			2 bed Village	3 bed Village	3 bed Fisherman	4 bed Captain	
1-2 people	55	70	May 9 - May 23	85	100	110	135
3-4 people	65	80	May 23 - May 30	150	170	200	220
5-6 people	75	90	May 30 - June 20	185	210	230	255
7-8 people	85	100	June 20 - June 27	250	270	285	320
			June 27 - July 4	280	300	330	375
			July 4 - Aug 29	330	350	390	450
			Aug 29 - Sept 5	170	200	235	285
			Sept 5 - Oct 3	110	140	165	180

Easter 1-3 nights £170.
Each additional night £25
Captains Cottage 25% extra
October Holiday & Christmas/New Yr.
1-3 Nights £130. Add. nights £15/night
Captains Cottage 25% extra

1992 Prices include V.A.T. @ 10%

SHOP AT
**BROSNAN'S
SPAR SUPERMARKET**

**BEST SELECTION OF
FRESH FRUIT & VEGETABLES
COOKED MEATS GROCERIES CONFECTIONERY**

PARKING
FACILITIES

Now with
**In-Store
BAKERY &
FRESH MEATS**

Tel: 028/28236

NEWSAGENT

English & Irish newspapers

SWEETS - SOUVENIRS - CARDS & STATIONERY

MAIN ST., SCHULL

TEL: 028 28236



**STANLEY
HOUSE B & B**

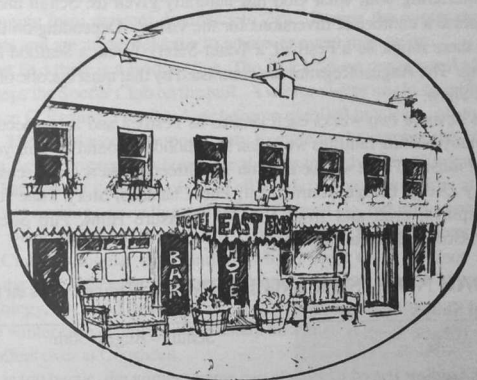
Select Accomodation
Full facilities
in all rooms

View overlooking
Harbour

Conveniently located
1km from Schull.

Prop. Nancy Brosnan
Tel. 028 28425

East End Hotel



Schull

Tel: 028-28101 / 28274

Open All Year Round

Accommodation, Breakfast, Barfood, Dinner
Sunday Lunch, Special Events, Meetings
Non-Residents Welcome

Props: Derry & Dorothy Roche

Classic Touch

EAST END HOTEL

LADIES AND GENTS HAIRDRESSING

**OPEN — TUESDAY - SATURDAY 9.30 - 6.00 p.m.
LATE NIGHT BY APPOINTMENT TEL.: 028/28506**

THE SUMMERTIME

Without interfering with what God has naturally given us, Schull and the Mizen villages organise a number of diversions for the visitor. Depending on the month of the summer there might be a Festival, a Water-Safety Week, a Seafood Festival or a Race Meeting. The August Regattas are contrasted by that most bucolic of events - the Agricultural Show.

Schull has devoted two weeks each year to its Festival and it has become a major feature for many visiting families who plan their holiday around it. This year it will be two weeks of music. There will be Beat on The Street, Buskers and discos and a silver band. Fancy Dress, Bridge Tournament, Pub Charades, Story Time for Children, juggling displays, crab and trout fishing, Treasure Hunt, Pub Soccer, Tennis Tournament, Golf and much much more.

CALENDAR NON - SAILING EVENTS (Sailing events on fixture list)

Agricultural Shows

Ballydehob, (Check locally) Schull, August 30th

Fishing and Angling Dates:

May 3rd	Barnett Drapery Cup
May 24th	Dan O'Mahony Cup
June 7th	College Trophy
June 21st	Cahier Cup
July 5th	Gabe's Cup
Aug. 23rd	Ann O'Connor Cup
Sept. 13th	Black Sheep Inn Cup
Oct. 4th	Cork Crystal Trophy
Oct. 18th	New Ground Competition

Festivals

Schull	July 7th - 14th
Ballydehob	August 10th - 16th

Ballydehob Halloween Festival

Check locally

The Wintertime

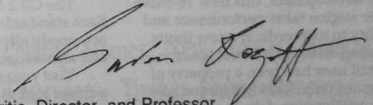
It has to be said that life does not cease here once the last summer visitor departs. From the Mizen Head to the Crooked Bridge there is a small but lively populace with interests ranging from amateur dramatics to Zen. During the winter months visitors still call to us and are made welcome to whatever event may be on.

At the East End there is a Bridge Club, The Black Sheep organises Angling and The Bunratty keeps the Soccer Club on the ball. A winter visitor might stumble onto a night of charades in O'Regans, Pier Road, or become enrolled in a team, off to Ballydehob, for a quiz. There's always the opportunity to stare at the stars in the comfort of the Planetarium, or if time permits, choose a nightclass to study at the Community College. The I.C.A. has a lively group involved at all levels of community life, and students at the College are running a recycling campaign. Gabriel Og, our hurlers and footballers, play every week and the Squash Club is both instructive and competitive. The Gardening Club has regular trips, and the Mizen Field Club continue their outings throughout the year with talks on a range of topics, not just historic but encompassing geology, ecology, flora and fauna.

There are winter race meetings and Sunday bowling. A good day will always find a group of golfers over at Coosheen.

If all this is too hectic, the winter visitor can always sit by a warm fire and sip a slow pint and come back to us when it quietsens down for the summer.

Schull and Dunmanus Bay country mean the gorse Samuel Beckett called 'ling and furze, hot yellow bells.' For me, the splendid isolation means much more - friends at the ready, long, unpressured days, the punctuation of silence with sounds of wind, gull, and the best confluence of vocabulary and imagination in the world.

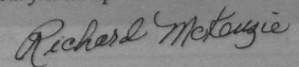


Gordon Rogoff, Theatre Critic, Director, and Professor

'No matter what you've written or the pictures you've sent, nothing prepared us for this beautiful place.'

That testimony from some visiting, much travelled friends sums up the area far better than I can.

Thank you Schull for that and your friendship.



Richard McKenzie, Artist.

**THE NEW SAAB CD 2.3i.
PROGRESSIVE TECHNOLOGY
REFLECTED IN
TRUE SAAB TRADITION.**



Distinctively Saab, deceptively innovative, the CD 2.3i heralds the arrival of a new generation in high-performance engines.

The result of over five years of intensive development, this new 16-valve 4 cylinder engine takes performance and driveability to extraordinary new limits. It's equipped with Saab Direct Ignition, which until now had been a property of turbo engines only. Uniform torque and sensitive acceleration deliver a smoother, more relaxed ride.

Designed for unleaded fuel, the CD 2.3i

features a catalytic converter and a system which can reduce the emission of harmful exhaust gases by up to 80 per cent. Evidence of Saab's commitment in the drive for a cleaner environment.

The CD 2.3i is equipped to a typical Saab standard: Front-wheel drive, orthopedically-designed heated front seats and an aeronautically-inspired cockpit.

Visit your nearest Saab dealer and take a closer look at the car that achieves the optimum balance between performance and practicality. You'll witness progress in the true Saab tradition.



SAAB

SOLE IMPORTERS: SCANVECO LTD. PO BOX 1419,
LONG MILE ROAD, DUBLIN 12. TELEPHONE: (01) 504243.
A MEMBER OF THE OHM GROUP.

The Altar Restaurant
Spectacular Seafood - Organic Produce

B & B
en suite

Charlie's Wine Bar

Irish Night
Wednesdays
Live Music



A La Carte Weekdays
Wine Bar Menu
All Day Sundays

Proprietors
Family Ryan

Toomore, West Cork
Phone 028-35254

Megalithic
Wedge Grave

B.F.E. Reg. Still Welcome to **Bring your own wine**

MICHAEL O'REGAN
Building Contractor

Builders of: Quality Homes, New Houses, Bungalows,
Extensions, Timber Frame Housing,
Extensions & General Repairs.

- SERVING ALL OF WEST CORK -

Traditional Stone Houses &
Fireplaces and Patios
are our Specialities.

Showhouses for Inspection.
Also - see our range of
FASTNET HOMES, plans available.

Corelacka, Goleen, Co. Cork

Tel & Fax: (028) 35318.

GOLEEN, CROOKHAVEN & BARLEY COVE

Whether cycling, walking or driving, there is a magic of a kind in the places of the Mizen: Knocknamadree, Knockaphuca, Corran Hill, Heron's Cove.

A drive to the sleepy village of Goleen will take you past mountain and bog. A turning at Ballydevlin will take you on one of the most scenic routes Ireland has to offer. Eventually it will bring you to the stunning beaches at Barley Cove. The long golden strands and sheltered sandy coves are ringed by mountains and fringed by lakes, and it is here you will find a hotel, literally perched above the beach. With its small golf course, tennis court and swimming pool, it is a pleasant place to stay before continuing a little further on to where Ireland ends with a radio-signal station at the Mizen Head. Soaring cliffs and an infinite variety of sea-birds, then nothing but Atlantic between you and America, and a reminder that the first Atlantic signal was sent from the Mizen by Marconi. A visit to his old house in Crookhaven will tell you his story and solve the puzzle of why he chose to move his experimental station elsewhere.

Swim at Barley Cove, Galley Cove, Cockle Shell Strand or Ballyrisode. Launch a boat in Goleen or Crookhaven. And there's plenty of fine fishing from the rocks and piers around the coast.

Journey's End is the aptly named restaurant in the quayside hamlet of Crookhaven. Once here, the only way out is to back-track or take to the water, but there is plenty to keep you charmed in idleness. A couple of pubs, several restaurants and an exclusive little gift shop. In July and August, the Church of Ireland holds regular services in the pretty cliffside church named St. Brendan the Navigator. The natural harbour hosts an annual Regatta and provides many visitors with happy memories of sitting, glass in hand, watching the sails of the many yachts moving against one of the most peaceful and breathtaking backdrops in the world.

I first fell in love with Crookhaven on a 'soft' October day 25 years ago. Even under rain that was coming down like stair-rods, it was as pretty as a picture; and to my mind still is as lovely a harbour-side village as you'll find anywhere in Ireland. Here is the perfect horse-shoe haven for fishermen, yachtsmen and wind-surfers alike, friendly villagers and a dinky quayside beach for children. But what 'Crook' has most of all is its own special indefinable charisma. Let the world rush about its business, get ulcers, blow itself up, but just let me sit on that sea wall on a sunny day, sipping a pint from Billy's pub and watching the seagulls over the tide. Ah, now there's the very essence of bliss!

Colin Reid, retired Daily Mail columnist and feature writer

Farm Fresh Veg. - Fresh & Frozen Meats - Groceries

DERMOT SHEEHAN FOODSTORE

Main Street, Goleen.

Fishing Tackle - Camera Films - Ice-cream

Cooked Meats - Chilled minerals

Best Quality Coal-Heat Logs-Briquettes

EXPLORING THE WEST - STOP FOR A REST
OPEN 7 DAYS TILL LATE. TEL 028 35236.

LOOKING FOR PROPERTY? Contact the specialists.

SHEEHAN & HANLEY

AUCTIONEERS - VALUERS - ESTATE AGENTS

Main Street, Goleen.

Listings of property in all areas in West Cork.

For a personal service contact:

DERMOT SHEEHAN Tel: (028) 35236. Day or Night.

Joe Hanley: (021) 771574. Day or Night.

Ballinloughy, Ballinhaslig.

Journeys End Crookhaven

RELAX BY THE TURF FIRE AT OUR
COTTAGE ON THE EDGE OF THE SEA
AND ENJOY THE BEST OF FOOD

Reservations Please

Major Credit Cards Accepted

☎ (028) 35183

BARLEYCOVE BEACH HOTEL & VILLAS

All rooms En-Suite
with Colour T.V. & Direct Dial Telephone
SELF CATERING VILLAS TO SLEEP SIX

Come and enjoy our
Excellent Food ◦ Indoor Heated Swimming Pool
Nine Hole Par 3 Golf Links ◦ Tennis Court
Night Entertainment

PHONE. 028 35234/35101 FAX. 028 35100

Sylvia Connell DESIGNS

NEW FACTORY OUTLET **NEW**
at Ballyrisode.

Wide range of
knitwear & Crafts

Relax and enjoy the
scenic view with a
cup of coffee from our

NEW COFFEE SHOP **NEW**



Tel & Fax: 028-35159

FINBARR & ANNE COUGHLAN'S LOBSTER POT BAR

IS NOTED FOR ITS BEERS, SPIRITS & WINES
PROFESSIONAL SERVICE

SPORTING CHAT, THE OCCASIONAL BLAST OF A SONG
AND GREAT CRAIC ALL THE TIME!

MAIN STREET, GOLEEN.

Satellite Television for Sports Events. Off licence sales. Telephone 028 35366

MARY McARTHY'S BAR

Best Drinks, Darts & Spontaneous Singing!

Unleaded and Premium Petrol - Diesel

The last Filling Station before America!

MAIN STREET, GOLEEN.

Telephone: 028 35146

BARLEY COVE HOLIDAY PARK BARLEY COVE (PH 028 35302)

Mobile Homes for hire.

Pitches for Touring Caravans & Tents.

Available to the public -

* SHOP * TAKE-AWAY * LAUNDRY *
* CRAZY GOLF * TOILETS * TELEPHONE *

ALWAYS AT YOUR SERVICE

O'Reilly Courier Services

West Cork - Limerick & Galway Mon., Wed. & Fri.

West Cork - Cork - West Cork Daily

Dublin - Cork - Dublin 5 Days



Prop: Eoghan O'Reilly

GOLEEN, CO. CORK
Tel: (028) 35455, (088) 591206



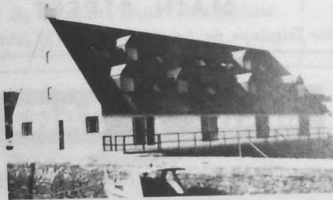
Les Mouettes

(The Seagulls)

Crookhaven, Co. Cork.

Self Catering Apartments.

Located in the village of Crookhaven. Walking distance to bars & restaurants, sandy beaches, wind-surfing. Approx. 1 mile to 9 hole golf links, and indoor swimming pool.



For bookings & brochures:

Phone Ray & Joan McCrum 028 35344 or Fax 028 35392

Highland & Harbour

PONY TREKKING

GOLEEN

Visit the Hidden Mizen on Horseback.

Rates: IR£8.00 per hour, including equipment. Concessions for groups and accompanied children. Proprietor and Guide in Charge: Michael Goggin.

☎ 028 35416 ☎

Follow signs at East end of Goleen village.

Insured by British Equestrian Insurance Brokers

It's hard to top a day of solitude walking along the coast at Rossbrin and a gossip evening begun in the convivial atmosphere of Levis pub, eventually winding up two steps across the road at Annie's. There's really no need to ever leave Ballydehob, except perhaps for the magic of a meal on Hare Island.

Frances Ruane

Frances Ruane, Art Historian and Critic

O'SULLIVAN'S BAR

CROOKHAVEN



Tel: 028-35319

THE WELCOME INN
On Darle Français

BAR FOOD
MUSIC NIGHTLY
* * *
GENERAL STORE
&
POST OFFICE
* * *
SELF CATERING
ACCOMMODATION
* * *
WELCOME INN
RESTAURANT

MARCONI GUEST HOUSE AND RESTAURANT CROOKHAVEN

SELF CATERING
ACCOMMODATION

LICENSED
RESTAURANT

B & B
PARTIAL &
FULL BOARD



Claire Barrett

Phone 028-35168

WALKS

There are many short strolls around the coastal area of Schull Village for easy perambulations in sight and sound of the sea. For serious walkers there are the hills and mountains and the excellent Ordnance Survey Maps to guide you on longer treks. For the keen but inexperienced walker a series of walks have been listed. Colour coded and of different lengths, they are meant as an introduction to areas on the periphery of the village. They are circular routes with crosses and turns marked with the relevant colour pegs for direction. As you walk these various paths and lanes you will come to see other opportunities to branch from the set routes and explore the countryside on your own.

ARDMANAGH LOOP - Green Route Approximately 2 miles.

Start between the bank and Griffins Bar and continue up the hill past the enterprise centre. Upon reaching T junction, after 1 mile, keep taking right turns until the loop is completed. Once completed, turn left and return to Schull down the hill.

COLLA RING ROAD - Red Route Approximately 4.5 miles.

Start at the Bank. Head along Colla Road, past Schull Community College and Planetarium. Continue along coast road past Colla pier. Upon reaching T in road, turn right. Follow road up and over the hill and back down onto Colla Road.

DEREENATRA RING - Blue Route Approximately 9 miles.

Leave Schull on Ballydehob road, turn right at 1st 'Golf Links' sign and follow road for 2 miles before turning right at Drinagh Co-op store, down to Dereenatra pier. Turn through pillars, turn right and carry on along road for 2 miles before a sharp right and left at pink house at top of hill. Follow road down to main road and turn left back towards Schull. Take first right and reach Schull/Bantry road at foot of Mount Gabriel. Turn left again at fork. Follow hill down past old work house, reaching main Schull/Ballydehob road. Turn right to bring you back to Schull.

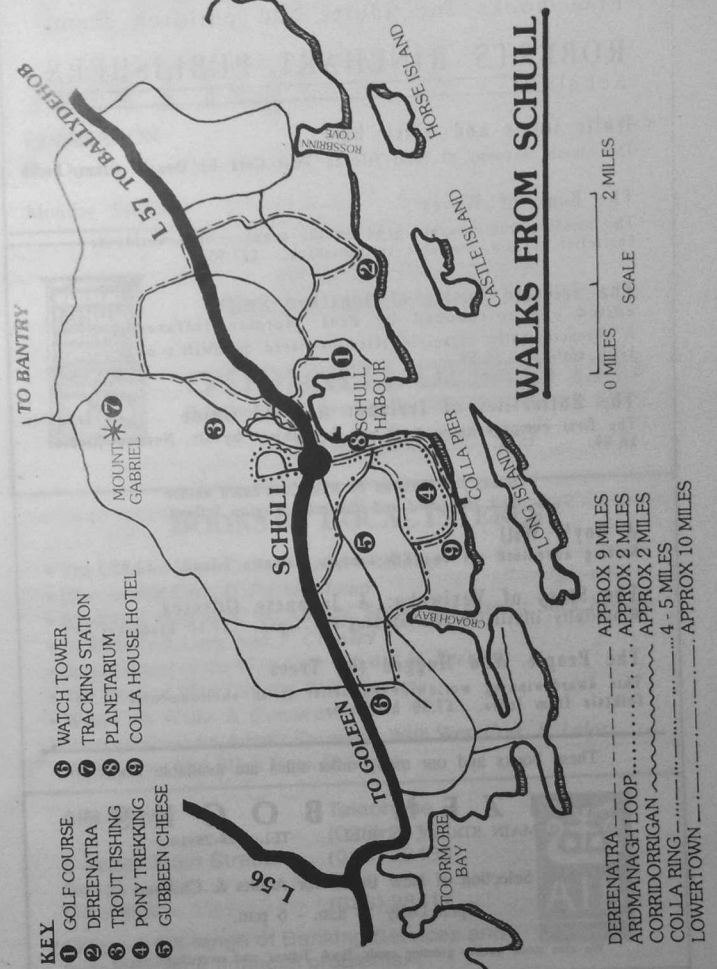
COORYDORIGAN RING - Yellow Route Approximately 2 miles.

Start at the Church, going up hill along the Bantry road. Take the 3rd turn right. At the T junction turn right: at next junction turn left. At main road turn right and back into Schull.

LOWERTOWN RING - Approximately 10 miles.

Start as in Colla Ring route. At T junction turn left, down to Croagh Bay. Take right turn along shore to '5 crosses' junction. Turn left up the hill. At the top turn sharp right past Lemcon watch tower to Lowertown church. Turn right along main road, then right again at the 'Ard na Greine' sign. At junction turn left back towards Schull. Take arrowed route right, turning down Bill Barrys road, back to Colla road and Schull.

General directions: Arrows may be placed to help at some junctions. Continue straight ahead, unless otherwise advised by directions.



Fine books for adults and children from
ROBERTS RINEHART PUBLISHERS
Schull

White Goats and Black Bees

The classic account of rural life in West Cork by Donald Grant. £6.99

The Book of Waves

The amazing photographic book on the ocean. This worldwide bestseller is now available in paperback. £17.95

The Selected Poems of Jonathan Swift

edited and introduced by Prof. Norman Jeffares
A chronologically organised selection based on Swift's own 1735 edition. £9.99

The Butterflies of Ireland: A Field Guide

The first comprehensive work on the subject by Dr. Norman Hickin. £8.99

Books for Children by West Cork-based author Erik Haugaard and illustrator Birgitta Saftlund.

A Boy's Will

Sailing adventure set on 18th century Valentia Island. £2.95

The Story of Yuriwaka: A Japanese Odyssey

Beautifully illustrated tale of long-ago Japan. £7.50 hardcover

The People Who Hugged the Trees

This award-winning worldwide bestseller is an environmental folktale from India. £7.50 hardcover

These books and our many other titles are available from

M I Z E N B O O K S
MAIN STREET, SCHULL TEL: 028-28414

Fine Selection of New Books for Adults & Children
Open Daily 10 a.m. - 6 p.m.

We also stock quality greeting cards, Book Tokens, and secondhand books

COTTAGE ANTIQUES

China
Brass
Copper
Boxes
Prints
Collectables

DUNBEACON

On Durrus - Mizzen Head Road three miles from Durrus

Monday - Saturday From 10.30 a.m. Phone 027-61045

**PAINTED FURNITURE
IN THE TRADITIONAL STYLE**



O'DONNELL DESIGN LTD

Baltimore Rd., Skibbereen, Tel 028 22274, Fax 028 22267

SHOWROOMS 9.00 - 5.00

BOOKS OF LOCAL INTEREST

- The Coast of West Cork, *P. SomervilleLarge*
- Discovering Cork, *D. Pochin Mould*
- Exploring West Cork: the Ancient, Sacred and Historic Sites, *J. Roberts*
- In West Cork Long Ago, *F. Crowley*
- Secret Places of the West Cork Coast, *J.M. Feehan*
- The Story of West Carbery, *W.L. Kingston*
- West Cork Walks, *K. Corcoran*
- West of West! An Artist's Encounter With West Cork, *B. Lalor*
- White Goats and Black Bees, *D. Grant*

AIB Bank

3 Upper Main Street
Schull
Co. Cork

Telephone
(028) 28132
(028) 28430
Fax
(028) 28417



Offers a full range of Banking Services and help with your financial problems.
Visit our "Bureau de Change"
Manager: Len Desmond

THE ARTS IN WEST CORK

West Cork probably has more artists and craftspeople per square mile than any other part of rural Ireland, and the range of work available is impressive - paintings, prints, ceramics, weaving, woodwork, jewellery, designer knitwear, toys Many of these artists are well-established, some are just beginning, but the thing they all have in common is that their work is produced to a high standard. Much of it is available direct from studio or workshop, and often at a fraction of the prices charged in big-city stores.

If you do not have time to go searching for the studios and workshops there are many craft shops and galleries in the area, and at the West Cork Arts Centre in Skibbereen there are monthly exhibitions of local and national artists' work, to which visitors are always welcome. The Centre has also produced a guide and map giving details of artists and craftspeople in the area who will sell from their studios.

In 1991, the Centre inaugurated the Sculpture Trail, which runs from Skibbereen to Schull. A number of sculptures have been placed in the landscape, and more will be added each year. A full catalogue and map are available from the Arts Centre.

If your interests lean more towards the written word, you are also well catered for. The works of Somerville & Ross are well known to many, and are based on life in West Cork around the turn of the century. There are many contemporary authors resident in the area, and their work is readily available. Subject range is comprehensive, and includes poetry, literature, history, travel and childrens' books, some of which are published in Schull. Secondhand, out of print and antiquarian books can also be bought locally.

Finally - music. Concerts of traditional and classical music take place at regular intervals throughout the summer - check local papers for details. And, of course, don't forget the "sessions" in the bars - a grand way to capture some of the atmosphere of West Cork, and enjoy a pint or two at the same time!

Jack O'Connell
Administrator,
West Cork Arts Centre

SCHULL BOOKS

WE SELL HIGH QUALITY SECONDHAND & ANTIQUARIAN BOOKS
ON ALL SUBJECTS FROM OUR BOOKROOM AT DERRYCONNELL
JUST OFF THE MAIN SCHULL/BALLYDEHOB RD.
WE ALSO ISSUE CATALOGUES AND OPERATE A BOOK SEARCH SERVICE.
PLEASE PHONE FIRST TO MAKE SURE WE ARE IN.

BARBARA & JACK O'CONNELL, PHONE: 028 - 37317

ARD NA PHUCA
WORLD-CLASS VEGETARIAN DINING
- LOCAL SEAFOOD -

"YOU WON'T MISS MEAT"

FOR RESERVATIONS & DIRECTIONS:
028-35107
TOORMORE WEST CORK

Barry O'Meara

Lissacaha, Schull, West Cork



Heating & Plumbing Contractor
WATER PUMPS - Sales & Service
WATER & AIR FILTERS - Sales & Service
Gas, Oil & Solid Fuel Heating
Fast, Efficient Repair Service

Tel: 028 28356
Fax: 028 28508

Andy's

RESTAURANT
Main Street, Schull

LUNCH
COFFEE/TEA
DINNER

Open 7 days
12 a.m. - 10 p.m.
Phone 028-28597

DURRUS
FARMHOUSE CHEESE
HANDMADE IN COOMGLEEN
DURRUS BANTAY CO. CO. CORK, IRELAND

2 1/2 Miles
AHAKISTA St. James DURRUS

Visitors welcome by appointment.
Please ring 027-61100

CAPE CLEAR ISLAND

Cape Clear is the largest island of Carbery's Hundred Isles. 3 miles long and 2 miles wide, the island huddles in the Atlantic Ocean, a great beast with an arched back lost in the flood. Although only 7 miles from the West Cork mainland, and a 45 minute boat journey from Schull, it is another world. The scenery is wild and romantic. Unspoiled by pollution, the water is crystal clear. Heathers, gorse and ferns cover the scraggy sheer hillsides. Bracken shines golden in the sun.

Before the Famine, in 1847, the population of Cape Clear was 1200. It is now only 150. Every holding was self-sufficient. All fields and gardens were tilled. Every house had it's hand-quern for grinding wheat. They raised sheep and grew flax. The menfolk ploughed the fishing grounds. The women ploughed the land. The ruins of the stone houses stand sentinel to that bygone age.

Time has slowed on Cape Clear. (The only time-keepers are the ferries!). Islanders are easy-going and friendly. They will happily sit on the ditch with you and entertain you with tales of myth and magic and the glories of old. The rush and tumble of the real world is forgotten. Cape Clear is a Gaeltacht. Most of the Islanders can speak Irish, so if you would like to practise your "cupla focail", they will willingly help you.

Not far from the harbour are the ruins of St Ciaran's church. It is reputed to be the first Christian Church in Ireland. At the south west point of the island are the ruins of Dun an Oir, which was an O'Driscoll castle. It is now inaccessible but can be viewed from the hill tops. In the south west of the island is a fresh water lake, Lough Errul. The water of the lake has cleaning powers. The women did their washing there - the wash stones along it's banks are evidence of this. The only Church on the Island is the Catholic Church. There was a Church of Ireland here, but in 1933, it was demolished. The Cornish Granite stones were taken to Schull and are now part of the AIB bank on Main Street. The original National School has now been converted into a Heritage Centre, and is well worth visiting. It is open every day in the Summer.

CAPE CLEAR - Irish style

Ait aoibhinn i Cléire. Tá ceol na dtonn le chloisint - measctha le ceol na néan agus ceol ár dteanga Gaeilge. Fásann plandaí annamha ildaite ar ar genoc is ar gelaóithe cloch. Is féidir seal a caitheamh ag féachaint ar na farraigí ársa, nó ag seanchas le muintir an Oileáin - daoine bróduil suimiúl cáirdúil - oile ón saol a chaitheann siad in a ndomhain féin anseo i lár an tAigéan Atlantic i gconaf ag iomrascáil le Cúmhacht na Mara.

Kevin P. O'Flynn, B.C.L.

P. Joseph McCarthy, B.A.

Helen M. Hoare, B.C.L.

J. Raymond Hennessy, B.C.L.

Phil O'Regan, B.C.L.

Maura O'Donovan, B.A.

Dermot O'Flaherty, B.C.L.

James L. O'Keeffe, Consultant.

WOLFE & COMPANY, SOLICITORS

Market St., Skibbereen, Co. Cork,
Tel. 028/21177

East End, Schull, Tel. 028/28551
(Mon & Thurs 2.15 - 4.30 p.m.)

Muintir Skibbereen Credit Union Ltd.

NORTH STREET, SKIBBEREEN,
PHONE (028) 21883

**NEW SUB OFFICE
EAST END, SCHULL
Tel: 028 28666**

*Save and borrow at your CREDIT UNION, and
see the power of local money working locally.*

SCHULL BUSINESS HOURS:

Tuesday 10 - 12.30 1.30 - 4.30
Saturday 10 - 12.30 3.30 - 6.30

BALLYDEHOB

One of life's best sights is to come around the curve of the main road and see the many and various colours of the village of Ballydehob, the first of the West Cork villages to slough the grey mantle and apply coats of colour to the walls.

The twelve arched bridge immediately identifies the village and shows the traveller one of the last and finest remnants of the old West Cork Railway. Near the bridge there is a childrens' playground and community hall with tennis and basketball courts, amenity and leisure walks.

Ballydehob is an excellent holiday centre with comprehensive shopping, excellent restaurants and pubs. In the main street, alongside the hardware and groceries, the visitor can find a health food shop, antique shop and cakery. Annie's is located mid-village and both restaurant and its eponymous owner are as identifiable with the place as the bridge itself.

Always known for its artistic community there are numerous working artists in and around the village where both art gallery and craft shop can be found. A visit is a must to its many quaint bars where one will readily find music and good "crack".

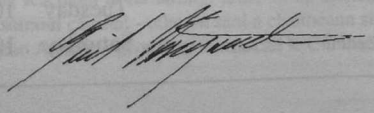
Hudson's Wholefoods Main Street, Ballydehob

ORGANIC WHOLEFOODS, VEGETABLES, YOGHURT,
BREAD, TOFU, TEMPEH, HOME BREWING, BOOKS,
HOMEOPATHIC REMEDIES, BULK DISCOUNTS,
GOOD SELECTION OF IRISH CHEESE

OPEN: MONDAY - SATURDAY 10.00 A.M. - 6.00 P.M.

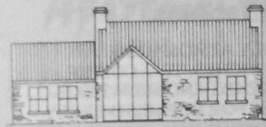
Ballydehob

Let them smile at the name in Dublin, to us it means something more. The wind that sweeps from the ocean in. The silent wingbeat of a heron. The bridge that spans our bay, the green green hills and at night the myriad of stars in a smogfree sky.

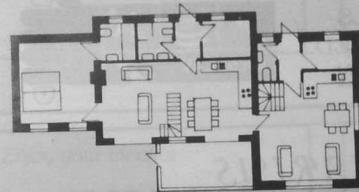


Erik Haugaard, Danish Writer

HILDEGARD and DIETRICH ECKARDT • ARCHITECTS



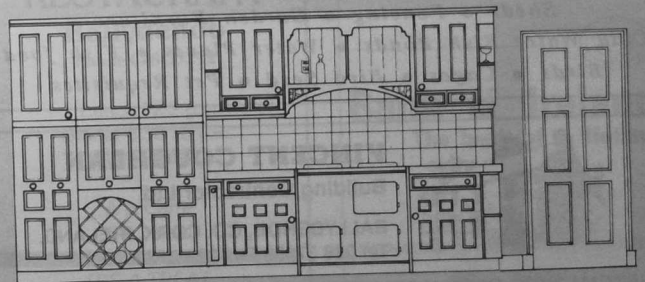
Home and Design Ltd
Cappaghglass, Ballydehob
Co. Cork, Ireland
Tel 028-37335
Fax 028-37335



We are designing,
constructing,
decorating
and furnishing
traditional
style houses.

TURN KEY READY.

We are designing and building traditional
old pine kitchens and furniture.





VINCENT COUGHLAN'S PUB

BALLYDEHOB

FRIENDLY ATMOSPHERE
SOUP, SANDWICHES, TEA, COFFEE
MUSIC WEEKENDS AND MIDWEEK —
SEE LOCAL PRESS FOR DETAILS WEEKLY

PROPS: Joe & Maria Standen

TOM HICKEY MOTOR ENGINEER

MAIN STREET, BALLYDEHOB, CO. CORK, TEL 028 37198

ALL MAKES OF CARS AND
LIGHT COMMERCIALS
SERVICED AND REPAIRED.
PERSONAL ATTENTION

DIESEL DIAGNOSTIC CENTRE



AQUARIUS

GARDEN CENTRE
Ballydehob (Schull Road)

Shrubs • Plants • Flowers • Seeds • Etc.
Sheds • Fencing • Garden Furniture
Cold Water Fish Ponds • Water Plants • Fish food
Birds • Cages • Bird Seed • Pet Requisites



VINCENT COUGHLAN

Building Contractor Ltd.

BALLYDEHOB, CO. CORK, IRELAND.
Tel 028 37230 Fax 028 37342

SPECIALISING IN QUALITY NEW BUILDINGS: RECONSTRUCTION
INCLUDING TRADITIONAL STONE-BUILT HOMES.
ALSO PROPERTIES FOR SALE
INCLUDES BUILDING PLOTS & FARMS ALONG THE COAST.

The Forge Apartments

BALLYDEHOB

2 LUXURY SELF CONTAINED
APARTMENTS
COURTYARD AND PATIO

COMPLETE PRIVACY
WITHIN WALKING DISTANCE
OF RESTAURANTS, BARS
ETC.

AIRPORT & FERRY PORT
APPROX. 1 HOUR

ENQUIRIES 028-37353

Barry O' Brien

The Irish Whip Bar

BALLYDEHOB

- For Good Drinks
- Light Snacks

- Served in a
Friendly Atmosphere

Irish Music Most Nights

A Call IS A MUST

Phone 028-37191

Prop. Barry & Caureen O' BRIEN

Enjoy your meal at

ANNIE'S RESTAURANT

Ballydehob

Phone 028-37292

Lunch 12-2 p.m.
Dinner 6.30-10 p.m.
(Please Book)

A-la-Carte
Set Meals

IT'S A TREAT

Your friend
for life



Bank of Ireland
The bank of a lifetime

BRIAN WILLIAMS
(MANAGER OF SKIBBEREEN BRANCH)

TEL: 21700

AREA SHORE ANGLING GUIDE

LEIGHILLAUN:

Bottom fishing for dogfish and occasional conger. Floatfishing for wrasse. Spinning for pollack and mackerel. Flood tide best.

TOUR PIER:

Spinning for pollack and mackerel. Floatfishing for wrasse. Bottom fishing for conger. High water best.

DUNLOUGH BAY:

Spinning from jetty for pollack and small coalfish. Bottom fishing for conger and wrasse. High water most productive.

VAUD CREEK:

Spinning from pier for coalfish, pollack and mackerel. Floatfishing for wrasse. Bottom fishing over mixed ground for codling, conger and occasional plaice, bass and ray.

BARLEY COVE:

Surf fishing from North and East beaches for codling, flounder and occasional bass, dab and plaice. Spinning from rocks for occasional seatrout and bass.

BARLEY LAKE:

Bottom fishing from road bridge for flounder, freshwater eel and mullet (ground baiting essential). High water best. Spinning in channel for occasional seatrout. Dusk on a flood tide most productive.

BROW HEAD:

Deep water close in. Steep climb down, can be dangerous in wet conditions. Spinning from rock platforms for pollack and coalfish. Float fishing for wrasse.

GALLEY COVE:

Spinning from outer rocks for pollack and coalfish. Bottom fishing from inner rocks over mixed ground for flounder, dogfish, bullhuss, conger, occasional codling, small turbot and ray.

COAST GUARD SLIPWAY:

Bottom fishing for flounder, dab, dogfish and occasional ray. Flood tide best.

BALLYRISODE POINT:

Deep fishing from rocks for wrasse, dogfish and pollack. Most productive at high tide.

TOORMORE:

Fishing from rocks on both sides of channel for wrasse, dogfish, bullhuss and flounder. Flood tide best.

BAIT-----

DUNMANUS HARBOUR:

Some lugworm on southern shore, east of quay. Crab around base of quay.

CROOKHAVEN:

Lugworm and occasional clam. Some crab around rocky outcrops.

GOLEEN:

Lugworm in harbour and some crab north of slipway and around rocks.

TOORMORE:

Crab amongst weeds on both sides of channel. Mussel.

ALTAR CHURCH:

Lugworm and occasional clam on banks of channel. Crab round rocks in middle of bay.

O'REILLY'S FOODMARKET

EAST END, SCHULL

GROCERIES & COOKED MEATS
FRUIT & VEGETABLES

FloGas
agent

Prop. Michael O'Reilly

Newsagents

DONAL NEWMAN

POST OFFICE

Tel: 028-28110

BUREAU DE CHANGE

NATIONAL LOTTERY

LOTTO

POSTCARDS & STATIONERY

FILMS & CAMERAS

WINES & GROCERIES



Telephone: 028 28573

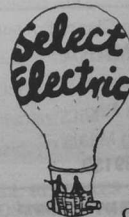
MIZEN COMPUTER SERVICES

Fax: 028 28573

Secretarial Bookkeeping Printing

Fax facilities, Photocopying, Wordprocessing & Business Accommodation

MAIN STREET, SCHULL (Entrance between newsagent & SPAR supermarket)



SUPPLYING:

A wide range of small domestic appliances, Walkman's, Clock Radios, Radios, Radio Cassettes, Batteries, Light Bulbs, Electric Accessories, Vacuum Cleaners, Dust Bags - All types.
REPAIRS - to all makes of washing machines & small appliances

PLEASE ENQUIRE
Prop: Joe Collins

Main Street, Schull
Co. Cork (028) 28581



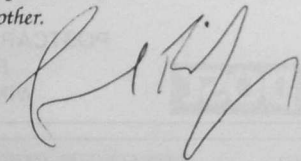
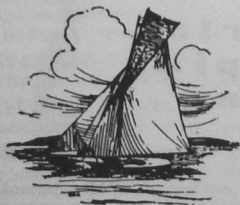
Rossbrin Boatyard

Edmund Krugel
Rossbrin/Schull, Co. Cork, Tel.: 028-37352

Winter Storage, 8 Tons, 12 ft Beams
Repairs, Maintenance, Conversions
Engine Repairs and Installations.

Schull is our favourite holiday place: it has everything. It offers relaxation for those who want a quiet life; a wide range of sporting activities for those who want to be energetic; and an active social life for those who want to be gregarious. All this in a friendly and relaxed environment, where visitors and residents relate easily to each other.

Garret FitzGerald, T.D.

COME SAILING

MAKE "DALUA", 15 TONS, AND HER SKIPPER YOURS FOR THE DAY OR LONGER, SEE THE

ISLANDS & SEALS

UP TO 5 PEOPLE

ROSSBRIN YACHT CHARTERS

028-37165

EST.
1972

FERRY TO CAPE CLEAR ISLAND "KARYCRAFT"

June 2.30

July 10.00 2.30 4.30

Aug. 10.00 2.30 4.30

KIERAN MOLLOY 28138

Stay on Cape Clear at
"CLUAIN MARA"

North Harbour
Bord Failte Reg.,
B/B, Evening Meals
Tel. 028 39153

All sailings subject to weather and other conditions.

SAILING FIXTURE LIST 1992

May

Saturdays League for Paul Murray Trophy S.H.S.C.
Saturday 30th First Commodores Trophy

June

Saturday 6th Haltone Cup
Saturday 13th Colla Clipper Race
Saturday 20th Barnett Cup (Fastnet Race)
Saturday 27th Ronans Long Island Cup

July

Saturday 4th Eurostyle Copper Kettle
Saturday 4th West Cork Clubs social outing in Cape Clear
Saturday 11th Yami Yami Crews Trophy
Monday 13th IYA Sailing Course (Monday 13th to Friday 24th)
Saturday 18th Dingy Day Olympic Series. Parents Mirror Race
Saturday 25th Pope Bros. Cup
Sunday 26th Gunter Bell *Special collection in aid of RNLI*

August

Sunday 2nd Schull - Baltimore B.S.C.
Monday 3rd Baltimore Regatta B.S.C.
Tuesday 4th Schull - Fastnet - Schull S.H.S.C. + S.H.R.C.
Wednesday 5th Cape Clear Regatta (Secret Committee)
Thursday 6th Stage Race S.H.R.C.
Friday 7th Around Cape Clear S.H.R.C.
Saturday 8th Baltimore - Schull S.H.R.C.
Sunday 9th Schull Regatta S.H.R.C.
Friday 14th S.H.S.C. -v- C.S.C. dinghy challenge in Crookhv'n
Saturday 15th Crookhaven Regatta C.S.C.
Saturday 22nd Vincent O'Farrell Trophy
Sunday 23rd Life Boat/Sherkin Regatta Race

ALL FIXTURES ARE SUBJECT TO WEATHER AND ANY CHANGES WILL BE POSTED ON THE CLUB NOTICEBOARD AS SOON AS DETAILS ARE AVAILABLE.



SCHULL WATERSPORTS CENTRE LTD.

Yacht Chandlery, Diving & Sea Angling Trips,
Sailing Dinghies & Windsurfers, Tuition and Hire

Contact Simon & Angela Nelson, The Pier, Schull, Phone 028-28554

CALVES WEEK SAILING PROGRAMME 1992

Friday 31st July	Crosshaven - Schull	R.C.Y.C.
Sunday 2nd August	Schull - Baltimore	B.S.C.
Monday 3rd August	Baltimore Regatta	B.S.C.
Tuesday 4th August	Schull - Fastnet	S.R.C.
Wednesday 5th August	Cape Clear Regatta	
Thursday 6th August	Stags Race	S.R.C.
Friday 7th August	Cape Clear Island Race	S.R.C.
Saturday 8th August	Baltimore - Schull	S.R.C.
Sunday 9th August	Schull Regatta	S.R.C.

Sailing Instructions and Full Programme from: Secretary, The Courtyard

The Harbour

The safe and sheltered harbour is home for many waterborn activities. Schull has a busy fishing fleet and a modern fish processing plant. Visiting sailing and motorboats are always made welcome by Jimmy O'Reilly, the harbourmaster, one of the longest serving in the country, and practically a West Cork landmark.

Boats can be hired from Schull Watersports Centre which also boasts a well-stocked chandlery. Sea Angling and diving trips can also be arranged on the various motorboats operating in the harbour.

At Rossbrin sailors can find the Rossbrin Boatyard with slipping and launching facilities of up to 8 tons. Winter storage and moorings are also on offer, and all repairs and maintenance work can be carried out; and there is Andy Stott's boat charter company.

Schull harbour is the home of an active sailing club which organises week-end races for both cruisers and dinghies throughout the summer season. Visiting yachtsmen are invited to take part in all events, including the Schull Harbour Regatta which has grown into a major event since its birth in 1884. The Regatta is now the high spot of a week of active racing in and beyond the harbour. Occurring shortly after Cowes Week it has become known affectionately as Calves Week and has become a major event in the Irish racing calendar, attracting many boats and crews and the attendant crowds who participate in the week's racing.

The newest addition to the harbour events is the Fastnet International Schools Regatta, an annual event held in early July, for young sailors from all over Europe. Now established, it is regarded as one of the best of its kind, and competitors enjoy the mixture of tough racing and friendly companionship during the week.

The Mizen Peninsula offers some of the best diving in N.W. Europe. The water is clear and unpolluted, allowing a huge variety of plant and animal life to thrive. The Fastnet Rock offers some of the best underwater scenery to be found anywhere in the world. Wreck divers are drawn to the towering cliffs at Mizen Head where many ships met their end at the turn of the century. For the marine biologist a trip to the long established Lough Hyne Marine Reserve is a must.

There is a thriving local diving club and it is usually possible for visiting divers to join them for an odd dive or two. Contact them through Schull Watersports Centre, who will also help with bottle filling, boat charter and general advice.

The Greyhound Inn

SCHULL, COUNTY CORK
Tel.: 028/28320

WINE & SPIRIT
STORE

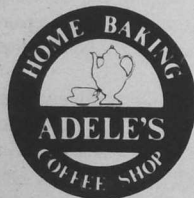
STOUT & ALES



BAR LUNCHES

TRY OUR
IRISH COFFEE

Your Hosts: John & Frances Reidy



ADELE'S

CAKES, BISCUITS, BREAD & CROISSANTS
QUICHE, PATE, PIES, SOUPS & SALADS
FRESH PASTA
HAVE AN ALL DAY MENU

NOW WITH WINE LICENCE

Adèle Connor * Main Street, Schull, Co. Cork * 028 28459

CENTRA CENTRA CENTRA

Hegarty's Foodmarket

SCHULL - Phone 028-28520

- General Groceries
- Deli Counter
- Wines
- Fruit & Veg
- Phone in Orders Taken
- Free Delivery Service
- Open 8 a.m. - 10 p.m. 7 Days
- Access - Visa Welcomed

CENTRA

JUST A WALK AWAY



DENIS COUGHLAN

JOINERY MANUFACTURERS



Outstanding hand-made
Conservatory and Garden Furniture
in the finest Quality Hard Woods.
Produced in our workshop
to meet your every requirement.
You can choose from our range of designs
or your own specification.

Real Traditional Craftmanship and
Old Fashioned Customer Care!

Phone or write for full details.

MAIN ST. · BALLYDEHOB · PHONE 028 37177

ARCHAEOLOGY

Neolithic Period 4000-2000 BC

The ruins of the only known Passage Tomb in Co Cork have recently been found on the highest hill on Cape Clear. There is a late Neolithic Portal Dolmen at Arderawinney, situated 200m north of the Schull-Goleen road, one mile east of Toomore Bay.

Bronze Age 2000-5000 BC

There are many Wedge Tombs in the area. A good example can be seen at Altar, on the edge of the sea, beside the road at the eastern side of Toomore Bay. Other examples are at Arduaslough near Crookhaven and in Kilbronoge, near Rossbrin. A newly re-discovered Wedge Tomb near Ryan's Restaurant in Toomore has been excavated. Among the finds were a bronze axe and some other bronze fragments which have been donated to the National Museum.

Boulder Tombs, a type peculiar to West Cork and Kerry, can be seen in Dunmanus East, Lisheen and Cooridorrigan, near Schull.

The late Dr John Jackson, a geologist, surveyed some probable mine shafts on the slopes of Mount Gabriel and suggested that they were of pre-historic date. That was in 1968; Dr Billy O'Brien, archaeologist of UCG, excavated the mines in 1985 and obtained dates of 1700 to 1550 BC, which puts them amongst the oldest in Northwest Europe. They are on the southeast slopes, south of the gap on the Schull-Durrus road.

There is a Stone Circle at Dunbeacon, two miles southwest of Durrus, on the Mine road. The most important Stone Circle in West Cork is at Drombeg, near Glandore, and should not be missed. It is orientated on the setting sun of the winter solstice and is in state care.

Iron Age 500 BC - 500 AD

There are a number of Coastal Promontory Forts on the peninsula. Two of the more spectacular are at Three Castle Head and Dooneen (Dunmanus Bay).

Early Christian Period 500-1100

The most numerous site-type of this period is the Ringfort (Rath or Lios), which was the farmstead of the time. The best examples are at Ratooragh, Lissacaha, Meenvane, and Rathruane. Meenvane is a half-mile from Schull on the Durrus road; the other three are marked on the Half-inch Roadmap no. 24.

There is a small number of monastic sites, notably at Croagh Bay (two miles west of Schull); Kilbrown (northwest of Goleen); and Coosheen (on the eastern side of Schull Harbour). A ninth century church ruin on West Skeam island was excavated in 1990 and a plinth built against its east end to protect it from further sea erosion.

Medieval Period post 1100 AD

At Kilmoe, near Barley Cove, is a ruined medieval church overlooking the lake. The east gable has a 12th century Romanesque window which has recently been conserved by grant from the County Council.

There are O'Mahony castles at Three Castle Head, Leamcon, Ardintenant, Rossbrin, Dunmanus and Dunbeacon. There is a McCarthy castle at Kilcoe, and there are O'Driscoll castles at Whitehall, Sherkin Island and Cape Clear Island. These would have been built in the 14th and 15th centuries.

The Mizen Field Club, based in Schull, particularly interested in the archaeology of the area, and with the history and ecology of the region, has monthly outings (first Sundays of the month). Since the opening of the Schull Planetarium, archaeologists and astronomers have been investigating the orientation of monuments in the area.

A Petra project, which signposted certain sites in the peninsula and produced a brochure, was run by the Community College, in 1990. The brochures are available at the library and the Tourist Information office in Main Street.

Paddy O'Leary



May we remind visitors to get landowners permission to enter their properties, beforehand, and to always close gates. Thank you.



TEACH DEARG RESTAURANT

Scarteenakillen · Ballydehob
Tel: 028 - 37282

OPENS JUNE 1st Tuesday to Sunday
SPECIALISING IN:
STEAKS, SALMON, GAME AND VEGETARIAN
DINNERS FROM 7.30p.m. LUNCHES FROM 12.30p.m.
Credit Cards

I'm not sure if it's possible to claim to 'come home' to a place in which you were neither born nor raised, were even unfamiliar with until a few years back. But if it is possible, then I've come home to West Cork.

It's people, it's peace, being able to shirug off all artifice and enjoy the luxury of just being yourself.

It's my idea of heaven!

David Puttnam, Film Producer



Lager beer at its best.

MAIN AGENTS
THE WEST CORK BOTTLING CO. LTD.

Skibbereen, Co. Cork

Tel. 028 21666 Fax 028 22328

OUTDOOR Challenge



FOR FURTHER INFORMATION

SCHULL
COMMUNITY
COLLEGE,
WEST CORK,
IRELAND
Telephone 028 28315
Facsimile 028 28467



HEGARTY BUTCHERS

Schull 028-28438 Ballydehob 028-37361

Prime Quality Beef/Lamb/Pork
Deep Freeze a Speciality

FRANK McCARTHY

Ardmanagh, Schull

Tel: 028-28474

Plumbing & Central Heating
All Type's Systems Installed & Serviced
GAS, OIL and Solid Fuel

Tim & Marie McCarthy

VICTUALLERS

Finest Quality
BEEF
LAMB
PORK
BACON
SELECT
FRUIT
VEG
&
POTATOES



Main St.,
Schull
Tel: 028-28571



Retail, Wholesale and deep freeze orders catered for
or your own stock slaughtered

FRANK WHELTON Ltd.

Sand & Gravel

Builders Supplier, Schull (028) 28102

BUILDING STONE - QUARRY FILL

Quotations for road making - Site clearance and all types
of materials supplied

the Bunratty Inn

AN AWARD WINNING PUB

**SUPERB BAR FOOD
SERVED DAILY**

Local Seafood Dishes A Speciality

Dine and Wine in Our Beer Garden.
Friendly and Efficient Service.
Entertainment.

Phone 028-28341

All Sporting Events Shown on GIANT Screen



F. & M. HURLEY PLANT HIRE (SCHULL) LTD.



Site Clearance ♦ Land Drainage ♦ Rockbreakers ♦ Rippers

We also specialise in supplying: Sand - Gravel - Hardcore

Rock fill and pit-run gravel at keen prices.

Tel: (028) 28161/28116 Fax: (028) 28116

SCHULL MOTOR WORKS

Motor and Tractor Sales

Batteries Servicing and Panel Beating
Tyres & Parts Electronic Tuning & Spraying

Tel: (028) 28116 Fax: (028) 28116

FAUNA OF THE MIZEN PENINSULA

The key to why the Mizen peninsula holds a spectacular array of wildlife species lies in its range and variety of intact habitats. In this area we have mountains and bogs, fields and hedgerows, moorlands and wetlands, coastal cliffs and heaths, islands and seashore; each containing a range of fascinating, and often easily seen, wildlife species. A brief survey of what is on offer would have to include such peculiarities as the Kerry Slug - found only in the extreme south west. The next nearest known location is Portugal - Draw your own conclusions from that mystery! Otters, getting increasingly scarce in Western Europe due to water pollution, recently have been shown to be abundant in all the streams and along the shoreline of the Mizen - as good an indication as you need to show the high quality of the local environment for wildlife.

Bats, badgers, foxes, stoats, rabbits and hares are just some of the mammals you may happen upon driving or walking the roads here after dark. A trip out of Schull harbour in one of the boats is recommended. If you're lucky you may spot some of the whales, dolphins, porpoises and basking sharks recorded regularly in the waters of Roaring Water Bay, if you don't see a whale you are guaranteed to see the grey seals - especially around Carthy's Rocks, south of the harbour. Bring your binoculars to see the gannets diving from a height to catch mackerel; other sea birds easily seen include guillemots, razorbills, shearwaters and terns. You could continue your sea journey to the bird observatory on Cape Clear, renowned internationally for its many and regular records of very rare migrant birds. Back on land a walk anywhere should result in the spotting of some of the full range of birds on the Irish list recorded for this area.

A trip to the cliffs of the Mizen Head should result in the sighting of choughs; birds that are very scarce in Britain and Europe but common here. Ravens, and if you are lucky, the peregrine falcon can be seen here also. The noisy breeding colony of guillemots and razorbills can be watched from the cliff 'path' to the right of the car park near the lighthouse. When you include the wide range of insects, especially butterflies and moths, you can see that whether you travel in a boat, car or pair of wellies you should come in contact with at least some of wildlife riches of this peninsula.

Declan O'Donnell
Wildlife Ranger

Famous visitors to the area have also made comments on time spent in the area.

Two items of interest were gleaned from the Guest Book from the old Grove House Hotel, now a nursing home for the elderly and infirm.

July 9th 1901 If you yearn for a hill
 In the woods that you love the which
 I will lead you to Schull
 And stay at the Grove
 M.C.S.
 G.B.S.

George Bernard Shaw initialled a short piece of rhyme

September 1901 Mr and Mrs Jack B. Yeats spent a month and
 three days at the Grove House and enjoyed to time
 greatly

and Mr and Mrs Jack B. Yeats also enjoyed an autumn break in Schull.

Every summer my family comes to Schull, one of my favourite things is fishing at the reservoir. The water is well stocked. The fish are a good size, and taste delicious, but even if you don't catch anything you can look at the mountain side, and the water. It is beautiful in any weather. You can make friends up there of all ages and from all over the place, and you can learn a lot about fishing from them. When I am away from Schull I think about it and really look forward to going back there.

Edward Hiscock

TIMOTHY COUGHLAN & Co. CHARTERED ACCOUNTANTS

Est. in Clonakilty in 1980, we now have a permanent office at Main St., Schull. (over SPAR Supermarket - entry by side entrance). Timothy Coughlan is in attendance each Wednesday and you are assured of personal attention on a one-to-one basis.
 Accounts • Taxation • Financial Investment • PAYE Reviews • etc.

Timothy Coughlan Financial Services Ltd. Insurance Brokers.

For all your insurance requirements.
 General Insurance • Life Assurance • Pensions
 Lump Sum Investments • Agents for the E.B.S.

"Best wishes to Schull Development Association"

Main Street, Schull. 028 28518
 Head office: 10 Rossa St., Clonakilty, 023 33763

M. BARNETT & CO. LTD.

Main Street, Phone 028 28124

**Builders Providers - General Hardware &
 Plumbing
 Glass Cutting - Floor Coverings
 Furniture & Bedding
 Wallpapers & Paints
 Fishing Tackle**

Bedding Plants & Everything for the Gardener

The firm that has satisfied it's customers for 90 years

East End

L Kay's

POUND STUFF MORE OR LESS
TOYS FANCY GOODS



BIJOUX Holiday apartments
(sleep 2-5 persons)
facing south, 1/2 mile east of Schull.
Daved sun terraces poised above the waves. Slipway. Reasonable Rentals.
Viewing: Saturdays by appointment.

028 - 28201

GROVE HOUSE NURSING HOME

Schull

24 Hour Nursing Care For Convalescent, Holiday Relief
Long and Short Stay
Physiotherapist, Chiropodist & Hairdresser Available
Tel.: Graham & Carol Harling ☎ 028/28114

COLLA HOUSE HOTEL

Ideally situated two miles out on coast road
with breathtaking views of sea and islands

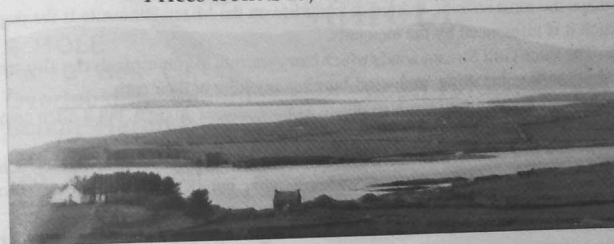
9 Hole Pitch & Putt Course
Bar & Restaurant
Select Accommodation

Centrally heated bedrooms with bathrooms en suite

Tel: (028) 28105



A selection of traditional farmhouses, stonebuilt cottages,
properties of character, sites with planning permission.
At the water's edge or with sea views.
Prices from £ 15,000 to £ 120,000.



Contact:

FEDORA PROPERTIES
Telephone: (01) 766616 or (028) 28615.

O'Donovan Murphy, Co.

Solicitors and Attorney at Law

Denis O'Donovan, BCL., Florence Murphy, BCL., Mary Jo Crowley, BCL.

Main St., Schull

Wednesday — 3 p.m. - 5 p.m. Tel.: 028/28362

Main Office at Bantry Tel.: 027/50808

Skibbereen: 028/22141

FOR BETTER QUALITY

TRACTOR & MARINE DIESEL
HEATING OIL • INDUSTRIAL FUELS
ROAD DIESEL • SHELL LUBRICATING OIL
SKIBBEREEN - BANTRY - CLONAKILTY



**SOUTH OF IRELAND
PETROLEUM
(WEST CORK)**

RING:
MICK MCCARTHY, SKIBBEREEN028-21024
.....028-21701
AIDEN CAHALANE, SKIBBEREEN028-21024
KEVIN MULLEN, CLONAKILTY023-33251

AFTER HOURS:
BRIAN CROWLEY 028-21024 OR 028-21701

MIZEN FLORA

Perhaps the most striking feature of plant life on the Mizen Peninsula is the degree to which it is influenced by the elements.

Air: The same Gulf Stream winds which carry warmth to young plants can also create havoc; uprooting, breaking, and wind-burning anything in their path.

Water: Our high rainfall tends to insure against serious drought, but it often creates the damp or boggy conditions which can prove fatal to many plants.

Earth: Much of the soil of the Mizen is a heavy, peaty loam tending toward the acidic and favouring ericaceous or acid loving plants, but occasionally the limestone substratum emerges to create alkaline conditions.

Fire: And we, with our profound need to rearrange our environments to serve everchanging ends, have altered the vegetation of the area forever. When forests were felled and fields created, shelters and watersheds were lost.

Yet, despite inimical conditions an amazing array of flowers, shrubs and trees have managed to take hold and flourish on these shores and mountains. They've used all sorts of tricks - waxy coating to protect themselves from salt, supple stems to move with the winds, and root systems that can survive extremes. It's this abundance of both native and exotic species that has created the colourful diversity of the flora of West Cork.

DEELISH GARDEN CENTRE
SKIBBEREEN, CO. CORK
TELEPHONE 028 21374



IN
ASSOCIATION
WITH


probably the most comprehensive selection of quality trees and shrubs in West Cork

- * Organic seeds and sundries
- * Pond liners, Fish and Aquatic Plants
- * Fruit Trees and Bushes
- * Alpines and Perennials
- * Fertilizers, Tools and Accessories
- * Unusual and Conservatory Plants

MIZEN LANDSCAPES
DEELISH, SKIBBEREEN, CO. CORK
TELEPHONE 028 22549

- Jungles Tamed....
Beauty Maintained....
- * Full Landscape Service
 - * Lawn Mowing
 - * Strimming and Clearing
 - * Patios, Stone Walls, Paths
 - * Holiday Property Inspections & Maintenance Service
 - * Brochure available

It is not just the scenery, wildlife and archaeology, but all our friends in Schull that make it such a special place. Time spent there is wonderful. Long may it remain so.

Frank Green

Frank Green, Archaeologist

COOSHEEN GOLF LINKS SCHULL

9 HOLE
Par 3 Golf Links
Overlooking Beautiful
Schull Harbour

CLUB HOUSE & BAR
open to the public.

Food served at bar.

Live music every Sat. night
Mid week music during summer season.

Large or small parties, 21sts,
etc. CATERED for.

Prop: Donal Morgan
Phone 028-28182

CENTRAL BED & BREAKFAST

MAIN ST., SCHULL

PHONE David McSweeney 28227

at
O'DONOVANS

CANDY & ICE CREAM STORE

BED & BREAKFAST CAPE VIEW

Corrydorigan, Schull, Co. Cork

1/2 mile from Village overlooking the Harbour

I.T.B. Approved — ☎ (028)28446



AMENITIES & FACILITIES IN THE SCHULL AREA

ARCHAEOLOGY

Outings: 1st Sunday of the month. Watch Library window for details.

ART GALLERY

Gurteenakilla, Ballydehob.

BABYSITTING

Fuchsia Gallery, above Fuchsia Books, Schull
See noticeboards/Tourist Information/
house rental agents

BICYCLE HIRE

Cotter's Yard, Main St., Schull 028 28165
Alan Murphy, Black Sheep Inn 028 28203
Schull Watersports Centre, The Pier
Tel: 028 28544

BOAT HIRE

Tommy Reidy, Greyhound Tel: 028 28320

BOAT TRIPS

Wintertime: East End Hotel Tel: 028 28101

BRIDGE

Celina O'Sullivan, Church Road 028 37232

CAMP SITE (Ballydehob)

CAMPING AND CARAVAN PARK

Colla Road, Schull Tel: 028 28303

CAR HIRE

Barry's of Bantry Tel: 027 50023

CAR PARKING

Limited in Summer.
AVOID DOUBLE YELLOW LINES
Car Park opposite East End Hotel

CHEESEMAKING

Gubbeen House Farm, Gubbeen
Bill Hogan, Dereenatra

CHILDREN'S PLAYGROUND

Adjacent to East Schull Car Park

COURIER SERVICE

O'Reilly Courier Services Tel: 028-35455

DEEP SEA ANGLING

Nick Dent Tel: 028 37406 &
Schull Watersports Centre, The Pier

DISCOS

(teenage & kiddies)

Watch for posters through the summer
Schull Watersports Centre, The Pier

DIVING TRIPS

Karycraft from pier.

FERRY TO CAPE CLEAR

Aquarius, Ballydehob &
Deelish Gardens, Skibbereen

GARDEN CENTRE

Coosheen Golf Club - 9 holes. Other
courses in Skibbereen, Bantry &
Glengariff.

GOLF

Information point only:
Richard Hudson Tel: 028 37211

HANG GLIDING

Mount Gabriel - Mount Kidd

HILL WALKING

Barnett's Drapery Tel: 028 28286

ICE MAKING FACILITY

Barnett's Drapery Tel: 028 28286

IRONING & LAUNDRY

INDOOR SWIMMING POOL

LAUNDRETTE

LIBRARY AND STORY READING

Barley Cove Hotel & West Lodge, Bantry
Schull Watersports Centre, The Pier

Located opposite the Bank. Check
publicity or with Librarian for story
reading.

PETRA PROJECT

Archaeological Drive. Leaflet available
from Library or Tourist Information office.

PICNIC AREAS

Around the harbour area

PITCH & PUTT

Colla House Hotel

PLANETARIUM

Community College, Colla Road 028 28552

PUBLIC LAVATORIES

Pier area

PUBLIC TELEPHONES

Car Park - Main Street - Outside Library

PUB MUSIC

Spontaneous. Also watch for posters
around town.

RIVER FISHING

Streams and lakes around Schull,
Ballydehob and Skibbereen.

ROCK CLIMBING

Mizen Head

SAILING CLUB

Schull Harbour Sailing Club.

SANDY BEACHES

Ballyrisode at Toormore - Barley Cove

SEA FISHING

Seasonal competitions

SHOWERS

Barnett's Drapery Tel: 028 28286,
Schull Watersports Centre, The Pier

SQUASH COURT

Community College, Colla Road.
Booking - Centra

SWIMMING

Safe bathing at Pier & Cadogans Strand.
East End approach to village.

TENNIS COURTS

TOURIST INFORMATION

Office located at The Courtyard, Main St.

TROUT ANGLING

Reservoir - licences from
Newman's Corner Bar.

WALKS

Many and various. (Check centre page)

WINDSURFING

Schull Watersports Centre, The Pier

YACHT CHARTER

Andy Stott, Rossbrin. Tel: 028 37165

Emergency Services

Goleen Coast & Cliff Rescue Services - 24 hrs. - 028/35318
Michael O'Regan, Area Officer

Further West... You'll find the Best!

WEST CORK'S LEADING
DESIGNERS, PRINTERS & SIGNMAKERS

anro graphics studio ltd
DUNBEACON, DURRUS/BANTRY, CO. CORK, TEL & FAX 027 61166



Blairs Cove House
Restaurant

IT'S SPECIAL
SELF CATERING APARTMENTS AVAILABLE

Durrus • Co. Cork

Phone 027-61127



The Courtyard

MAIN STREET, SCHULL,
WEST CORK
IRELAND

SHOP/BAR
Tel: 028-28390

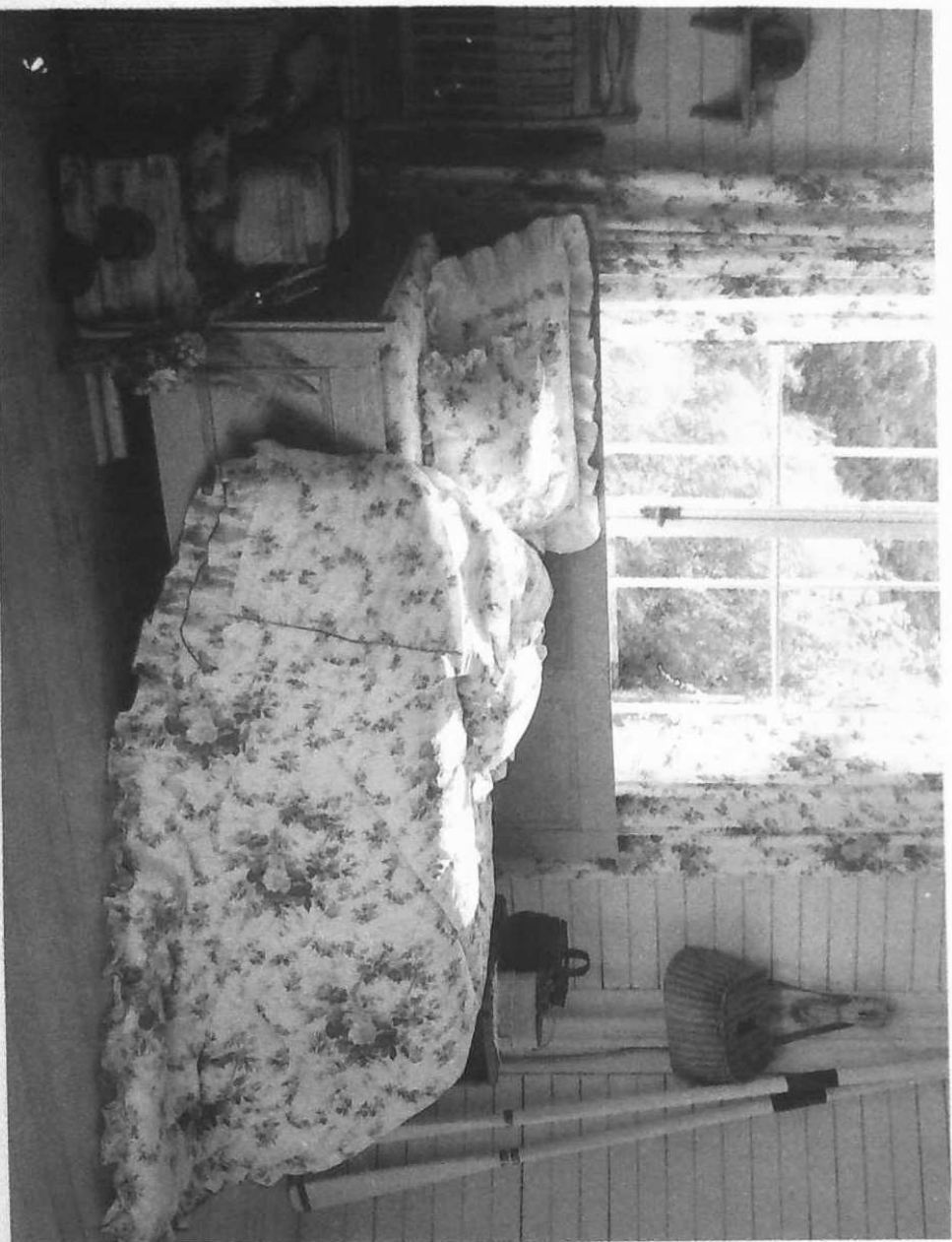
RESTAURANT • BAR • DELICATESSEN
OFF-LICENCE • CRAFTSHOP • BAKERY

Restaurant Reservations Tel: 028-28209 Open Nightly Mon - Sat from 7.30 p.m.

BURKES BANTRY LTD.

CURTAINS & BLINDS

GENERAL DRAPERY · DRY CLEANING · HABERDASHERY



- TERYLENE CURTAIN NETS, PRINTS, VELVETS, DUPIONS, MATCHING WALL-PAPER AND BEDLINEN, READYMADE CURTAINS, HOUSEHOLD LINENS, UPHOLSTERY MATERIALS AND ACCESSORIES
- SWAGS, FESTOONS AND AUSTRIAN BLINDS MADE TO MEASURE
- LARGE SELECTION OF CURTAIN TRACKS, RAILS, BRASS AND WOODEN POLES
- ROLLER, VERTICAL AND VENETIAN BLINDS
- PROFESSIONAL MAKE-UP AND FITTING SERVICE AND FULL CURTAIN & RAIL REPAIR SERVICE AVAILABLE
- FREE ESTIMATES AND FREE MEASURING

MAIN STREET, BANTRY, CO. CORK,

PHONE 027 · 50009 / 50519