





## FRENCH PROVINCIAL FAÏENCE QUIMPER



HB/Henriot Quimper, a name known wherever pottery is prized, is still made today in the town of Quimper in the province of Brittany, France. Each piece is fully and individually hand painted, initialed by the artist and signed *HB/HENRIOT* the factory mark.

Quimper designs are many and varied and reflect the diversity of Quimper artisans. Flowers, coqs, birds and particularly the peasant figures in their curious high lace coifs and baggy pantaloons capture the charm of life in Brittany. Today, we continue to paint over 30 decors 18 which are shown herein.

### DECORS OF QUIMPER

Our patterns are never discontinued. The nature of our product and the process of handpainting each piece allows us to paint for you any of our patterns on any form shown in our catalogue. If you do not see exactly what you are looking for, please call us. Chances are we have it in one of our shops or, if not, we will have it made especially for you at the factory. Although your pattern may not be shown in our catalogue, it will always remain part of our many decors of Quimper we continue to paint.

### HISTORY

Quimper, the quaint, old world, gray granite town is dominated by the ancient Cathedral of St. Corentin built in the 15th century. Bordering the Odet River and near the center of town stands the old pottery factory. Traditions of pottery making in Quimper go back as far as Gallo-Roman times. However, Jean Baptiste Bousquet is credited as being the founder of the pottery industry, since it was he who in 1690 first hired other artisans to form a factory. Two important surviving factories, Henriot and Grande Maison HB, merged in 1968 to form the HB/Henriot factory of today.

HB/Henriot Quimper faïence has been improved without losing its character. The texture of the finish is smoother and shapes more uniform, yet the brilliant colors are still hand mixed and hand painted, thus each piece is individual with slight differences in decoration. Even the glazing technique is done by hand creating an uneven finish, and small pinholes here and there, which is a characteristic of the peasantware.

The history, character, and alluring patterns of the HB/Henriot pottery make this a truly unique French country earthenware perfectly suited for formal or informal dining and decorating. Of the many patterns produced by this famous faïencerie, the traditional patterns have stood the test of time and have a charming, old world influence on the user. Quimper will bring joy to your home for many years.



Henriot  
White glaze  
pgs. 13-18



Fleuri Royal  
Blue glaze  
pgs. 25-29



Corbeille Rose  
Cream glaze  
see below



Mistral  
Blue glaze  
pgs. 19-23



Soleil  
Yellow glaze  
pgs. 19-23



Jardin d'été  
Blue glaze  
pgs. 9-10

### DECORS OF QUIMPER

	28 cm	25 cm	21 cm	8 cm
Ajoncs.....	386 F	311 F	273 F	227 F
Breton.....	232 F	183 F	157 F	136 F
Champêtre.....	256 F	217 F	179 F	140 F
Corbeille Rose.....	289 F	233 F	204 F	169 F
Fleuri Rose.....	240 F	198 F	175 F	144 F
Fleuri Royal.....	240 F	198 F	175 F	144 F
Jardin d'été.....	232 F	183 F	157 F	136 F
Le Coq Breton.....	256 F	212 F	175 F	161 F
Le Coq Prestigieux.....	240 F	198 F	175 F	144 F
Valencay.....	386 F	311 F	273 F	227 F

Our catalogue is entirely handpainted in watercolor by Quimper artist Philippe Lalys. These paintings are artistic renderings and are not to scale.

**HB/HENRIOT • QUIMPER**





Fleuri  
Ivory glaze  
pgs. 35-37



Fleuri Royal  
White glaze  
pg. 3



Fleuri Rose  
White glaze  
pg. 3



Le Coq Breton  
Blue glaze  
pg. 3



Breton  
White glaze  
pg. 3



Le Coq Prestigieux  
Blue glaze  
pg. 3



Campagne  
Ivory glaze  
pgs. 35-37



Paysan  
White glaze  
pg. 31



Tradition  
White glaze  
pgs. 5-7



Ajones  
Blue glaze  
pg. 3

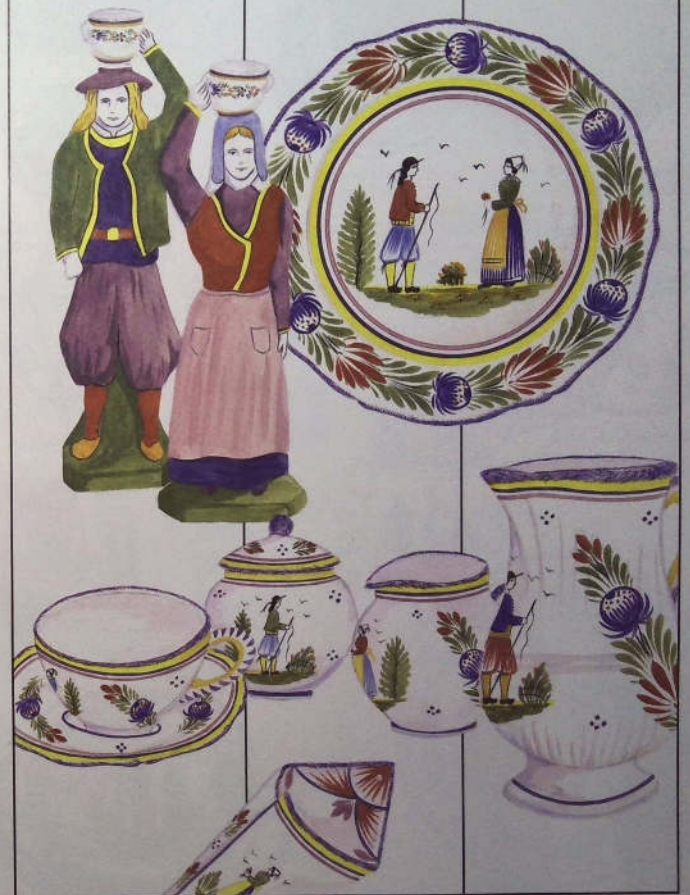


Valencay  
White glaze  
pg. 3



Champêtre  
White glaze  
pg. 3

## "Decor" TRADITION



HB/HENRIOT • QUIMPER



The Tradition decor captures early characteristics of Quimper artistry; varying colors in the Breton costume and more elaborate brush work in the floral border. The deep red and rich blue on a white background make this one of our most vibrant and lively patterns.



- 701 Dinner Plate 28 cm, 315 F
- 702 Luncheon Plate 25 cm, 259 F
- 704 Salad Plate 21 cm 229 F
- 705 Bread/Butter Plate 18 cm, 186 F

Round plates (page 4) and round saucers are also available.



715 Mug 30 cl, 209 F



767 Jam Jar/Spoon 17 cl, 236 F



279/8 Pair Breton Figurine Candlesticks 19 cm, 1292 F



735 Sugar, 267 F



736 Creamer 18 cl, 196 F



773 Salt & Pepper Set 8,5 cm, 258 F



778 Fish Plate 25 cm, 338 F



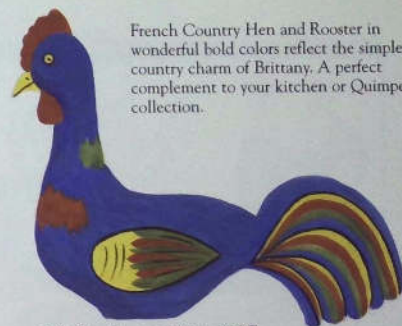
703 Mug Bowl 12 cm, 169 F



706 Coffee Cup & Scalloped Saucer 20 cl, 229 F



419 Yellow Hen 20 cm, 588 F



920 Blue Rooster 23 cm, 588 F

French Country Hen and Rooster in wonderful bold colors reflect the simple country charm of Brittany. A perfect complement to your kitchen or Quimper collection.



764 Fluted Pitcher 125 cl, 500 F



769 Butter Dish 18 cm x 12 cm, 198 F

770 Butter Knife 15 cm, 100 F



718 Set of 2 Napkin Rings, 156 F



729 Wall Pocket 20 cm, 171 F



739CP Covered Vegetable Bowl with 32 cm Platter, 1497 F

738 Platter 32 cm, 584 F



739C Covered Vegetable Bowl 175 cl, 913 F



Our full line of placesetting and accessory pieces are available in the Tradition decor, please call so that we may assist you.





1067D



1066D

1067D Sitting Baby 12 cm, 494 F  
 1067W Available in all white, 269 F  
 1066D Sitting Baby With Book 12 cm, 494 F  
 1066W Available in all white, 269 F

**VIRGIN MARY STATUE**  
 with baby very realistically modelled.  
 Available in four sizes:  
 470/1, 15 cm, 255 F  
 470/2, 22 cm, 315 F  
 470/3, 27 cm, 395 F  
 470/4, 31 cm, 455 F



**BRETON CROSS**  
 18 cm, 217 F  
 Available in:  
 Blue 109/B  
 Rose 109/R  
 Green 109/G



**Savigny Figurines** Some of the most popular figurines by the Quimper potters are those of the famous Berthe Savigny (1882-1958). She is well known for her baby figurines reflecting the naiveté of children. Choice pieces from these creations are the sitting baby and baby with book. Colors vary.



296WC Wall Clock 25 cm with accurate quartz battery movements, 373 F

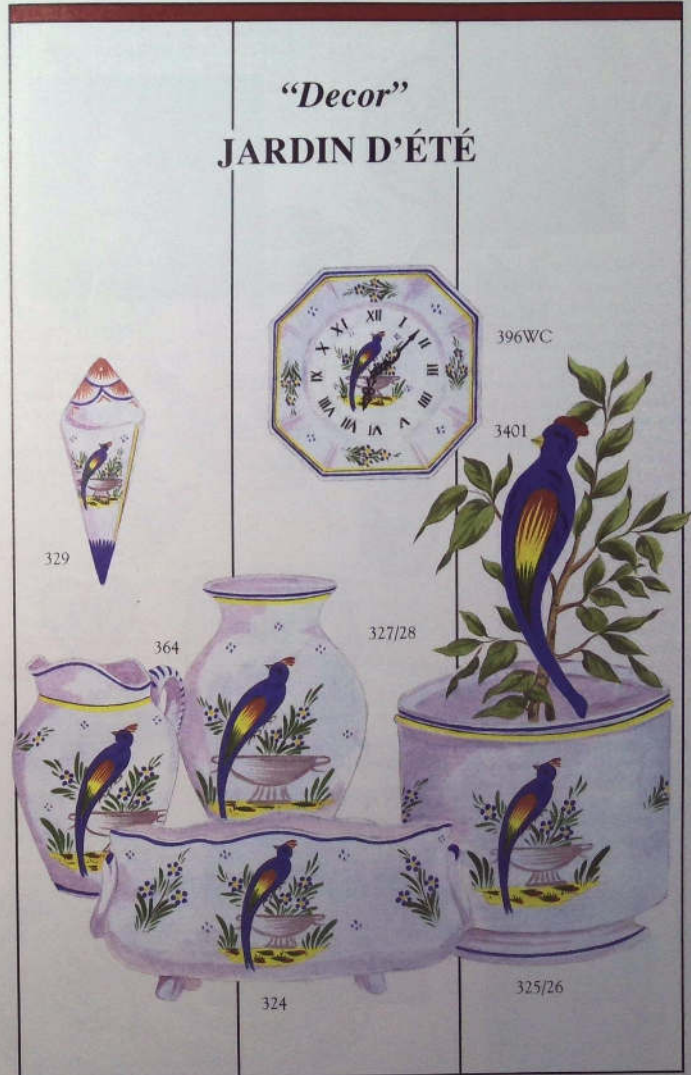


896WC Wall Clock 25 cm with accurate quartz battery movements, 363 F



696WC Wall Clock 26 cm with accurate quartz battery movements, 413 F

**"Decor"**  
**JARDIN D'ÉTÉ**



**HB / HENRIOT • QUIMPER**



301-305



315



306



FRONT COVER:

- 3401 Jardin d'été Bird Figurine 16 cm, 288 F
- 324 Jardinière 26 cm x 13 cm, 559 F
- 325 Cache Pot 16 cm x 17,5 cm, 450 F
- 326 Cache Pot 18 cm x 20 cm, 542 F
- 327 Vase 14 cm, 267 F
- 328 Vase 18 cm, 344 F
- 329 Wall Pocket 20 cm, 138 F
- 364 Pitcher 100 cl, 302 F
- 396WC Wall Clock 28 cm, 425 F



332A



334



333



350F



382L



340



367



373



339C

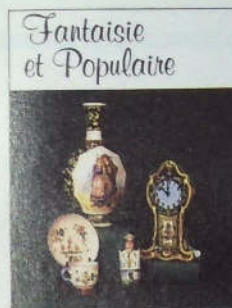


338



374

- 301 Dinner Plate 28 cm, 232 F
- 302 Luncheon Plate 28 cm, 188 F
- 303 Lunch/Breakfast Plate 21 cm, 161 F
- 304 Salad Plate 18 cm, 140 F
- 305 Bread/Butter Plate 16 cm, 133 F
- 306 Coffee Cup & Saucer 20 cl, 188 F
- 308 Lug Bowl 12 cm, 142 F
- 315 Mug 30 cl, 169 F
- 332A Teapot 6 cups, 394 F
- 333 Sugar 6 p, 271 F
- 334 Creamer 35 cl, 179 F
- 338 Platter 32 cm, 446 F
- 339C Covered Vegetable Bowl 25 cm, 638 F
- 340 Salad Bowl 24 cm, 238 F
- 350F Fluted Serving Dish 24 cm, 329 F
- 367 Jam Jar/Spoon 17 cl, 179 F
- 368 Covered Butter Dish 19 cm, 269 F
- 373 Salt & Pepper Set 8,5 cm, 204 F
- 374 Candlestick 13 cm, 236 F
- 374P Pair of Candlesticks, 472 F
- 382L Flat Heart 11 cm, 90 F

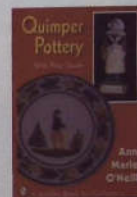


BOOK: *French Faïence "Fantaisie et Populaire" of the 19th and 20th Centuries*, by Millicent S. Mali. Histories of Quimper, Desvres, Blois, Malicorne, Angoulême and others. 90 color photos, 25 graphs, decorative details and markings. Soft cover. 200 F. Available only through our retail shops.



BOOK: *Quimper Pottery: A French Folk Art Faïence*, by Sandra Bondhus. Reissued third edition. Additional spectacularly beautiful color plates of antique Quimper. Complete history of the Quimper factories, patterns, marks, and artists. Over 100 color plates, thousands of color and half-tone examples of pieces from the original Quimper factory catalogues. 8 1/2" x 11" hard cover. 462 F. Available only through our retail shops.

Visit our workshops: The workshops are open from March to October, Monday through Friday, from 9:00 am to 11:15 am and from 1:30 pm to 4:15 pm (3:00 pm on Friday). Groups please reserve. Guided tours in French and English. The rest of the year, visits by appointment. *Faïenceries de Quimper*, Rue Haute, BP 1219 - 29102 Quimper Cédex - FRANCE; Tél.: 98.90.09.36 - Fax: 98.90.16.02.



BOOK: *Quimper Pottery with Price Guide*, by Ann Marie O'Neill. History and resource book which dates and values old Quimper. Over 280 color photographs with a coordinating price guide. 9" x 6" soft cover, 158 pages. 132 F. Available only through our retail shops.

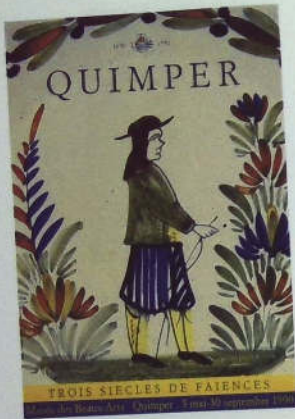
BOOK: *Pierre Deux's Brittany* by Linda Dannenberg, Pierre Levec and Pierre Moulin. Tours the picturesque northwest corner of France. More than 400 full-color photographs, 264 pages. 25 cm x 25 hard cover. 280 F. Available only through our retail shops.



BOOK: *Quimper Faïence*, English Edition, by Marjatta Taburet, 32 pages, 20 color plates. 300 year history of Quimper Faïence and marks. Soft cover. 28 F. Available only through our retail shops; or shipped with your order of faïence.







PRINT TO FRAME: Poster from the Musée des Beaux-Arts. 49 cm x 70 cm, 30 F  
 POSTCARD: 15 cm x 10,5 cm, 3 F  
 Pack of 24, 70 F  
 Available only through our retail shops; or shipped with your order of faïence.



PAPER TABLEWARE:  
 HPBN Beverage Napkin 25 cm x 25 cm pkg. 30, 25 F  
 HPDN Dinner Napkin 43 cm x 43 cm pkg. 24, 35 F  
 HPBP Buffet Plate 30 cm pkg. 10, 35 F  
 HPDP Dessert Plate 20 cm pkg. 10, 25 F  
 Available only through our retail shops; or shipped with your order of faïence.



WASTE PAPER BIN  
 7505 27 cm x 23 cm, 185 F



DISH WITH FRENCH SAYINGS:  
 11,5 cm x 9 cm, 92 F  
 Available in French or English. Please specify:  
 612/A The more I know man, the more I love my dog.  
 612/B A quarter of an hour to vote, four years to regret it.  
 612/C Life without memories is like a spring without roses.



7502 ENGLISH PLACEMAT  
 29 cm x 39 cm set of 4, 234 F  
 7504 ENGLISH PLACEMAT  
 (same decor as tray)  
 29 cm x 39 cm set of 4, 329 F



12

7503 TRAY 55 cm x 38 cm, 395 F  
 7501 COASTERS 11 cm x 9 cm  
 set of 6, 122 F  
 All heat resistant with lacquer finish.

"Decor"  
**HENRIOT**



HB / HENRIOT • QUIMPER

13

phone 98.52.22.52



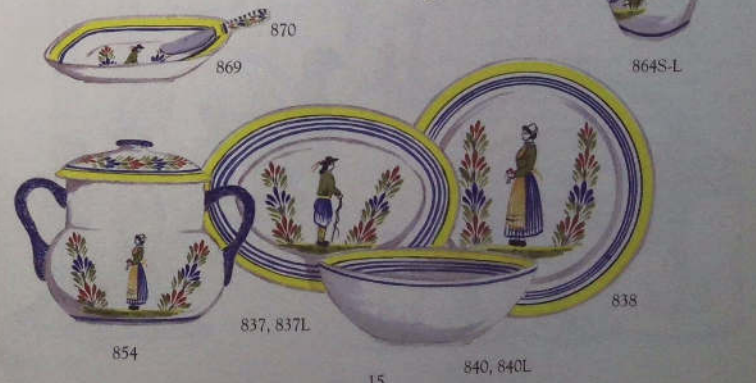
- 801 Dinner Plate 28 cm, 232 F
- 801B Border Dinner Plate 28 cm, 151 F
- 802 Luncheon Plate 25 cm, 188 F
- 802B Border Luncheon Plate 25 cm, 146 F
- 803 Lunch/Breakfast Plate 21 cm, 161 F
- 803B Border Lunch/Breakfast Plate 21 cm, 108 F
- 804 Salad Plate 18 cm, 140 F
- 804B Border Salad Plate 18 cm, 81 F
- 805 Bread/Butter Plate 16 cm, 133 F
- 805B Border Bread/Butter Plate 16 cm, 73 F
- 806 Coffee Cup & Saucer 32 cl, 215 F



- 807 Teacup & Saucer 20 cl, 198 F
- 808 Lug Bowl 12 cm, 142 F
- 808S Child Small Lug Bowl 10 cm, 115 F
- 810 Bowl 16 cm, 156 F
- 810S Soup/Pasta Bowl 23 cm, 179 F
- 811 Egg Cup 7 cm, 81 F
- 813 Mug 17 cl, 161 F
- 815 Mug 30 cl, 169 F
- 816 Chick Egg Cup 5 cm, 108 F
- 819 Double Egg Cup 10 cm, 119 F
- 831 Coffeepot 8 cups, 444 F
- 832 Teapot 4 cups, 315 F
- 832A Teapot 6 cups, 394 F
- 833 Sugar 12 p, 359 F
- 834 Creamer 38 cl, 186 F
- 835 Sugar 6 p, 246 F
- 836 Creamer 15 cl, 169 F
- 855 Sugar 9 cm, 146 F
- 856 Creamer 10 cl, 129 F
- 867 Jam Jar/Spoon 17 cl, 179 F
- 281 "Bonhomme" Figurine Covered Jar 12 cm, 396 F
- 868L Covered Butter Dish, 269 F
- 882 Heart 9 cm, 92 F
- 882L Flat Heart 11 cm, 90 F



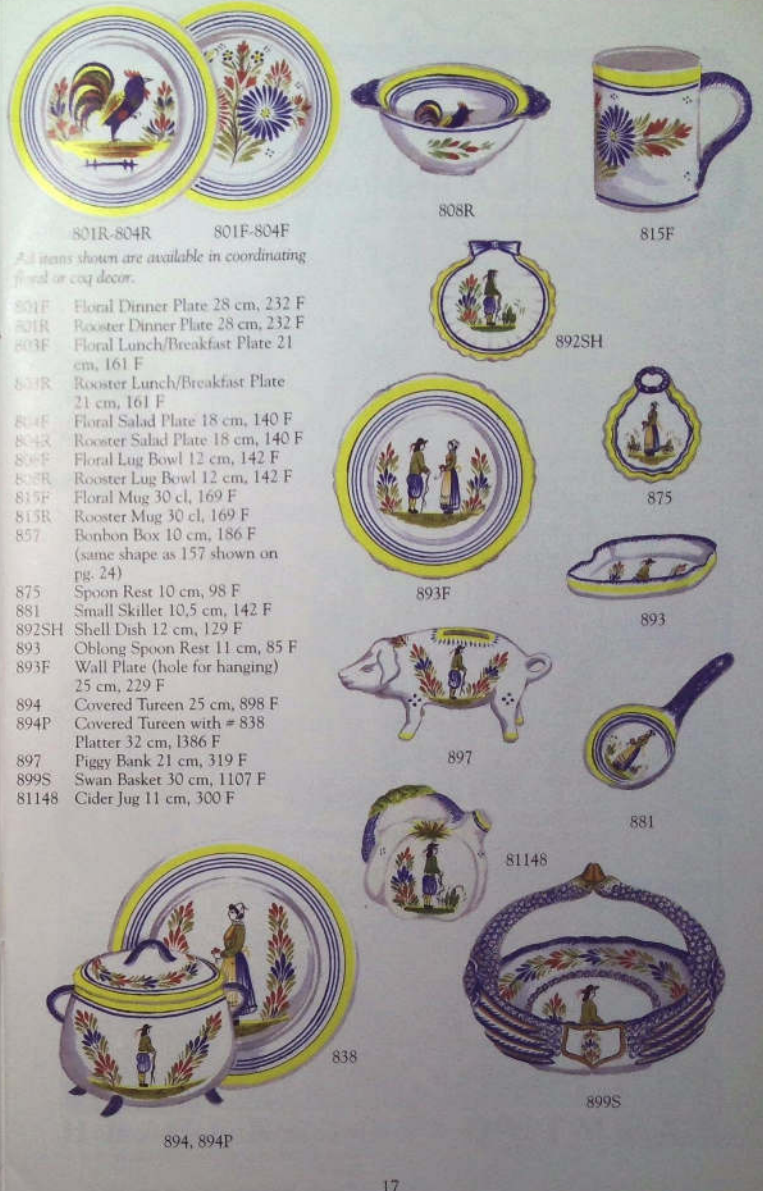
- 837 Oval Platter 35 cm, 454 F
- 837L Lg. Oval Platter 50 cm (with Breton man and woman), 1372 F
- 837H Tray 50 cm, 742 F
- 837HM Medium Tray 38 cm, 502 F
- 837HS Small Tray 25 cm, 225 F
- 838 Round Platter 32 cm, 488 F
- 839 Vegetable Bowl 22 cm, 202 F
- 839T Two-handled Vegetable Bowl 16 cm, 275 F
- 840 Salad Bowl 24 cm, 259 F
- 840L Large Salad Bowl 28 cm, 465 F
- 841 Sauceboat 15 cm, 217 F
- 842 Sauceboat & Saucer, 305 F
- 849 Mixing Bowl with Lip, 500 F
- 850F Fluted Serving Dish 24 cm, 329 F
- 851 Cake/Cheese Plate 29.5 cm, 331 F
- 853 Cake Knife 23 cm, 173 F
- 854 Cookie Jar 18 cm, 502 F
- 859 Pitcher with Ice Guard 75 cl, 309 F
- 864S Pitcher 12 cl, 173 F
- 864M Pitcher 25 cl, 208 F
- 864 Pitcher 100 cl, 302 F
- 864L Pitcher 125 cl, 344 F
- 869 Butter Dish 18 cm, 154 F
- 870 Butter Knife 15 cm, 100 F





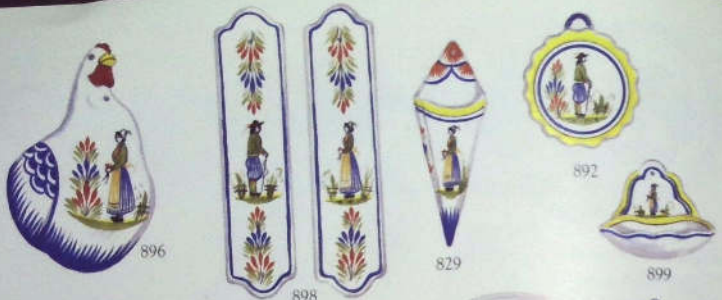


- 871
  - 872
  - 873
  - 876
  - 879S
  - 879
  - 865, 866T
  - 868
  - 877
  - 860-862
  - 863
  - 874
  - 875
  - 876
  - 877
  - 878
  - 879
  - 880
  - 880L
  - 891L
  - 891LX
  - 337/2
- 860 Pitcher 5 cl, 138 F  
 861 Pitcher/Creamer 15 cl, 177 F  
 862 Pitcher/Creamer 25 cl, 211 F  
 863 Rustic Pitcher 60 cl, 265 F  
 865 Small Tub 8 cm, 179 F  
 866T Butter Tub 12 cm, 248 F  
 868 Covered Butter Dish 11 cm, 248 F  
 871 Cheese Plate 21 cm, 221 F  
 872 Cheese Knife, 104 F  
 873 Salt & Pepper Set 8,5 cm, 204 F  
 874 Candlestick 13 cm, 236 F  
 874P Pair of Candlesticks, 13 cm, 472 F  
 876 Breton Shoes/Salt & Pepper 8 cm, 165 F  
 877 Strawberry Bowl/Chip & Dip 23 cm, 479 F  
 878 Fish Plate 25 cm, 265 F  
 879 Fish Platter 26 cm, 221 F  
 879S Small Fish Dish 11,5 cm, 92 F  
 880 Fish Platter 48 cm, 703 F  
 880L Large Fish Platter (with Breton man and woman) 60 cm, 957 F  
 891L 4-Piece Canister Set, 1259 F Sizes:  
 (a) 20 cm; (c) 16 cm;  
 (b) 18 cm; (d) 13 cm  
 891LX Six Piece Canister Set, 1555 F add spice jars:  
 (9, 10, 13, 16, 18 & 20 cm)  
 337/2 Two Piece Antique Duck, from our museum collection ltd. ed., 18,5 cm, 684 F



- 801R-804R
  - 801F-804F
  - 808R
  - 815F
  - 892SH
  - 875
  - 893F
  - 893
  - 893F
  - 897
  - 881
  - 81148
  - 899S
  - 838
  - 894, 894P
- All items shown are available in coordinating floral or coq decor.
- 801F Floral Dinner Plate 28 cm, 232 F
  - 801R Rooster Dinner Plate 28 cm, 232 F
  - 803F Floral Lunch/Breakfast Plate 21 cm, 161 F
  - 803R Rooster Lunch/Breakfast Plate 21 cm, 161 F
  - 804F Floral Salad Plate 18 cm, 140 F
  - 804R Rooster Salad Plate 18 cm, 140 F
  - 808F Floral Lug Bowl 12 cm, 142 F
  - 808R Rooster Lug Bowl 12 cm, 142 F
  - 815F Floral Mug 30 cl, 169 F
  - 815R Rooster Mug 30 cl, 169 F
  - 857 Bonbon Box 10 cm, 186 F (same shape as 157 shown on pg. 24)
  - 875 Spoon Rest 10 cm, 98 F
  - 881 Small Skillet 10,5 cm, 142 F
  - 892SH Shell Dish 12 cm, 129 F
  - 893 Oblong Spoon Rest 11 cm, 85 F
  - 893F Wall Plate (hole for hanging) 25 cm, 229 F
  - 894 Covered Tureen 25 cm, 898 F
  - 894P Covered Tureen with # 838 Platter 32 cm, 1386 F
  - 897 Piggy Bank 21 cm, 319 F
  - 899S Swan Basket 30 cm, 1107 F
  - 81148 Cider Jug 11 cm, 300 F





- 829 Wall Pocket 20 cm, 138 F
- 830 Vase 13 cm, 177 F
- 892 Spoon Rest 13 cm, 92 F
- 896 Chicken Head String Holder 14 cm, 246 F
- 898 Push Plate 22 x 5 cm, 146 F
- 898P Pair Push Plates, 292 F
- 899 Wall Soap Dish 11,5 x 10 cm, 271 F
- 1245 Bagpipe Bell 9 cm, 304 F
- 1330 Breton Woman Bell 10 cm, 304 F
- 895 Duck Jardinière 25 cm, 519 F
- 8722 Switch Plate 11 cm, 156 F



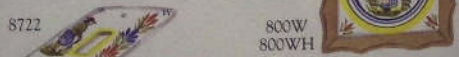
**FULLY HANDPAINTED TILES**

**SERIES #800: on white background**

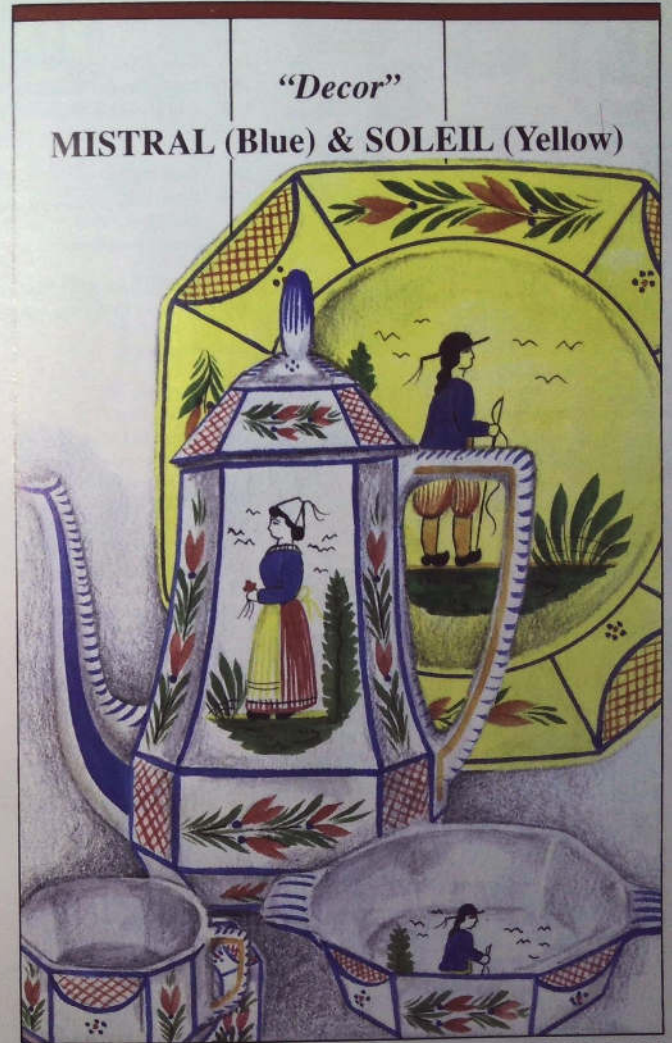
- |                              |                               |
|------------------------------|-------------------------------|
| Size: 15 x 15 cm:            | Size: 10,8 x 10,8 cm:         |
| 800M Man Tile, 104 F         | 800SM Man Tile, 92 F          |
| 800W Woman Tile, 104 F       | 800SW Woman Tile, 92 F        |
| 800P Corner Decor Tile, 60 F | 800SP Corner Decor Tile, 48 F |

**SERIES #700: on Mistral blue background**

- |                              |                               |
|------------------------------|-------------------------------|
| Size: 15 x 15 cm:            | Size: 10,8 x 10,8 cm:         |
| 700M Man Tile, 104 F         | 700SM Man Tile, 92 F          |
| 700W Woman Tile, 104 F       | 700SW Woman Tile, 92 F        |
| 700C Rooster Tile, 104 F     | 700SC Rooster Tile, 92 F      |
| 700F Floral Tile, 104 F      | 700SF Floral Tile, 92 F       |
| 700P Corner Decor Tile, 60 F | 700SP Corner Decor Tile, 48 F |



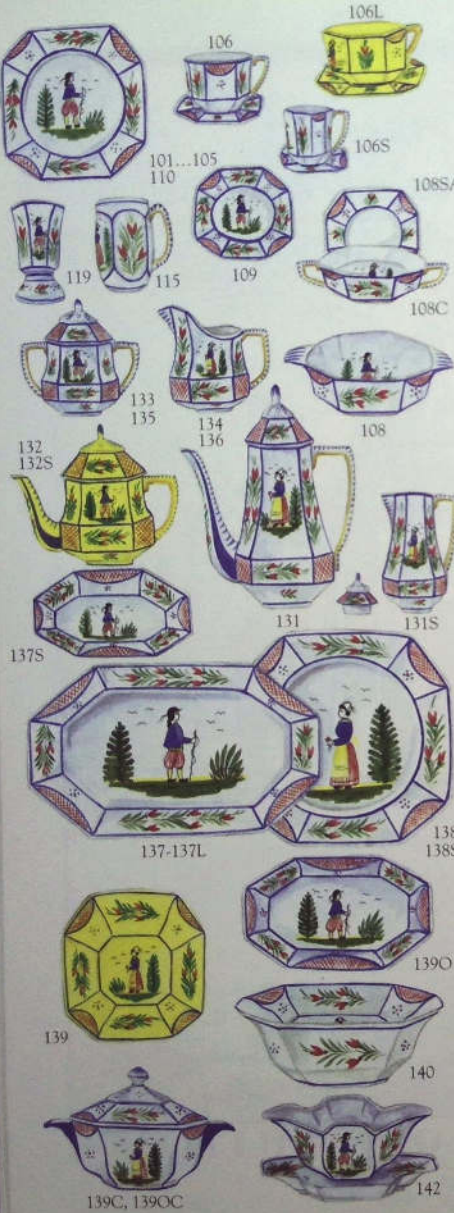
- 8722
- 800WH Wooden Tile Holder with tile (800W)  
22 x 22 cm or available with tile of your choice,  
208 F
- WHI Wooden Holder for 15 x 15 cm, 104 F



*"Decor"*  
**MISTRAL (Blue) & SOLEIL (Yellow)**

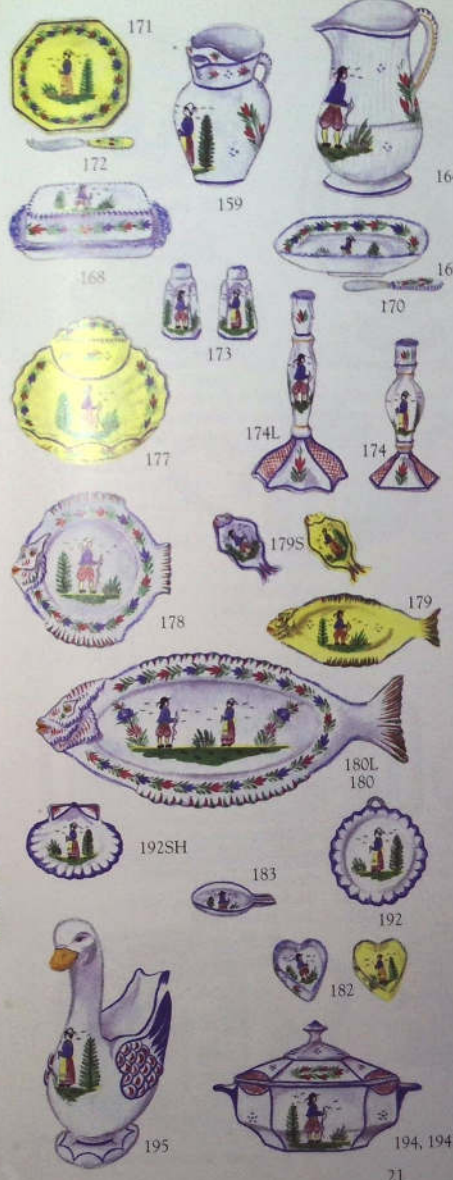
**HB/HENRIOT • QUIMPER**





These items are available in blue or yellow. Please specify color.

- 101 Dinner Plate 28 cm, 285 F
- 101B Border Dinner Plate 28 cm, 177 F
- 102 Luncheon Plate 24 cm, 229 F
- 102B Border Luncheon Plate 24 cm, 171 F
- 104 Salad Plate 21 cm, 204 F
- 104B Border Salad Plate 21 cm, 165 F
- 105 Bread/Butter Plate 18 cm, 169 F
- 105B Border Bread/Butter Plate 18 cm, 146 F
- 106 Coffee Cup & Saucer 20 cl, 259 F
- 106L Oversized Coffee Cup & Saucer 32 cl, 317 F
- 106S Demitasse Cup & Saucer 15 cl, 242 F
- 108 Mug 30 cl, 179 F
- 108C Cream Sugar 13 cm, 197 F
- 108SA Saucer for Cream Soup, 127 F
- 109 Fruit/Avoine's Dish 13 cm, 161 F
- 110 Soup/Pasta Bowl 21 cm, 238 F
- 110B Border Soup/Pasta Bowl 21 cm, 181 F
- 115 Mug 30 cl, 179 F
- 119 Double Egg Cup 10 cm, 165 F
- 131 Coffeepot 12 cups, 617 F
- 131S Coffeepot 4 cups, 584 F
- 132 Teapot 8 cups, 584 F
- 132S Teapot 4 cups, 359 F
- 133 Sugar 12 p, 359 F
- 134 Creamer 25 cl, 238 F
- 135 Sugar 6 p, 279 F
- 136 Creamer 12 cl, 161 F
- 137 Oval Platter 36 cm, 632 F
- 137L Lg. Oval Platter 42 cm, (with Breton man and woman), 803 F
- 137S Relish Dish 24 cm, 256 F
- 138 Round Platter 36 cm, 707 F
- 138SP Spaghetti Bowl 34 cm, 742 F
- 139 Vegetable Bowl 23 cm, 517 F
- 139C Service Bowl w/Cover 20 cm, 690 F
- 139O Oval Vegetable Bowl 28.5 cm, 517 F
- 139OC Oval Service Bowl w/Cover 150 cl, 690 F
- 140 Salad Bowl 28 cm, 575 F
- 142 Sauceboat & Saucer 24 cm, 559 F



- 159 Pitcher with Ice Guard 75 cl, 309 F
- 164 Pitcher 125 cl, 396 F
- 168 Covered Butter Dish 19 cm, 269 F
- 169 Butter Dish 18 cm, 154 F
- 170 Butter Knife 15 cm, 100 F
- 171 Cheese Plate 21 cm, 221 F
- 172 Cheese Knife, 104 F
- 173 Salt & Pepper Set 8.5 cm, 204 F
- 174 Candlestick 13 cm, 236 F
- 174P Pair of Candlesticks 13 cm, 472 F
- 174L Candlestick 22 cm, 261 F
- 174LP Pair of Candlesticks 22 cm, 522 F
- 174EL Candlestick 26 cm, 334 F (not shown)
- 174ELP Pair of Candlesticks 28 cm, 668 F
- 177 Strawberry Bowl/Chip & Dip 23 cm, 479 F
- 178 Fish Plate 25 cm, 265 F
- 179 Fish Platter 26 cm, 221 F
- 179S Small Fish Dish 12 cm, 92 F
- 180 Fish Platter 48 cm, 703 F (one figure)
- 180L Large Fish Platter 60 cm, 957 F
- 182 Heart 9 cm, 92 F
- 183 Ashtray 10 cm, 83 F
- 192 Spoon Rest 13 cm, 92 F
- 192SH Shell Dish 12 cm, 129 F
- 194 Covered Tureen 40 cm, 876 F
- 194P Covered Tureen with Platter #138, 1583 F
- 195 Duck Jardinière 25 cm, 519 F

Every piece is initialed by the artist on the bottom along with two sets of numbers: D-number indicating decor and F-number indicating form.



Items are available in blue or yellow. Please specify.



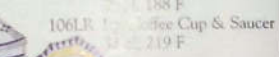
108R Lug Bowl 12 cm, 142 F

101R Dinner Plate 28 cm, 232 F  
101RB Border Dinner Plate 28 cm, 151 F  
102R Luncheon Plate 25 cm, 188 F

103R Salad Plate 21 cm, 161 F  
104R Dessert Plate 18 cm, 140 F  
105R Bread/Butter Plate 16 cm, 133 F



106R Coffee Cup & Saucer 10 cm, 188 F



106LB Coffee Cup & Saucer 10 cm, 219 F



115R Mug 30 cl, 169 F



155 Sugar 9 cm, 146 F



132R Teapot 4 cups, 315 F  
132AR Teapot 6 cups, 394 F



156 Creamer 10 cl, 129 F



167 Jam Jar with Spoon 17 cl, 179 F



137HS Tray 25 cm, 225 F  
137HM Medium Tray 38 cm, 502 F  
137H Tray 50 cm, 742 F



191L Canister Set 4 pcs., 1259 F  
sizes: (a) 20 cm (b) 18 cm  
(c) 16 cm (d) 13 cm



196 Wall Clock 28 cm with accurate quartz battery movements, 425 F



40BS, 40SBS



30BS, 30SBS



10BS

QUIET LAMPS: Handpainted in the traditional colors on a soft blue glaze in a man or woman design on a wooden base. Available with or without shade (blue piping). Please specify. NO BS = base and shade; B = base only. Measurements reflect overall height including shade.

Octagonal Lamp  
40BS 42 cm, 1718 F  
40B 40 cm, 1278 F  
40SBS 53 cm, 1497 F  
40SB 25 cm, 1163 F

Round Lamp  
30 BS 66 cm, 1632 F  
30B 36 cm, 1190 F  
30SBS 56 cm, 1388 F  
30SB 27 cm, 1053 F

Small Round Lamp  
10BS 40 cm, 888 F  
10B 22 cm, 644 F



1933SY Hurricane Oil Lamp 43 cm, 479 F



6933 Hurricane Oil Lamp 43 cm, 479 F



8933 Hurricane Oil Lamp 43 cm, 479 F



1933MB Hurricane Oil Lamp 43 cm, 479 F



154SY Cookie Jar 18 cm, 502 F



154MB Cookie Jar 18 cm, 502 F





629



130MB



630



130SY



129MB



129SY



182LSY



182LMB

629 Wall Pocket 20 cm, 138 F  
 129MB Wall Pocket 20 cm, 138 F  
 129SY Wall Pocket 20 cm, 138 F  
 630 Vase 13 cm, 177 F  
 130MB Vase 13 cm, 177 F

130SY Vase 13 cm, 177 F  
 182LSY Flat Heart 11 cm, 90 F  
 182LMB Flat Heart 11 cm, 90 F  
 692SH Shell Dish 12 cm, 129 F  
 657 Bonbon Box 10 cm, 186 F  
 157MB Bonbon Box 10 cm, 186 F  
 157SY Bonbon Box 10 cm, 186 F



692SH



657



157MB



157SY



199SSY



699S



199SMB

199SSY Swan Basket 30 cm, 1107 F  
 699S Swan Basket 30 cm, 1107 F  
 199SMB Swan Basket 30 cm, 1107 F

*"Decor"*

**FLEURI ROYAL**  
*on Mistral Blue Glaze*



**HB / HENRIOT • QUIMPER**





604

605

602

601B



610



615



606



608



633



634



632, 632A



637  
637L



638



638SP



639C



639F, 640F, 640FL



FRONT COVER:

- 684 Umbrella Sound 50 cm x 22 cm, 2393 F
- 697L Cache Pot 20 cm x 27 cm, 661 F
- 697M Cache Pot 19 cm x 24 cm, 561 F
- 697S Cache Pot 17 cm x 21 cm, 446 F
- 601 Dinner Plate 28 cm, 240 F
- 601B Border Plate 28 cm, 197 F
- 602 Luncheon Plate 25 cm, 198 F
- 604 Salad Plate 24 cm, 175 F
- 605 Bread/Bonnet Plate 18 cm, 144 F
- 606 Coffee Cup & Saucer 20 cl, 188 F
- 608 Lug Bowl 12 cm, 142 F
- 610 Soup/Pasta Bowl 22 cm, 188 F
- 615 Mug 30 cl, 169 F
- 632 Teapot 4 cups, 315 F
- 632A Teapot 6 cups, 394 F
- 633 Sugar 6 p, 271 F
- 634 Creamer 35 cl, 179 F
- 637 Oval Platter 39 cm, 673 F
- 637L Lg. Oval Platter 45 cm, 773 F
- 638 Round Platter 34 cm, 592 F
- 638SP Deep Round Platter 40 cm, 673 F
- 639C Covered Vegetable Bowl 175 cl, 638 F
- \*639F Vegetable Bowl 22 cm, 302 F
- \*640F Large Vegetable/Salad Bowl 25 cm, 390 F
- \*640FL Large Salad/All Purpose Bowl 29 cm, 484 F
- 669 Butter Dish 18 x 12 cm, 154 F
- 670 Butter Knife 15 cm, 100 F
- \*Floral decoration inside



669



670



637H, HM, HS



667



655



656



668



673



678



664S-664



677



674L



694, 694P



691L



682L



695

- 637H Tray 50 cm, 742 F
- 637HM Medium Tray 38 cm, 502 F
- 637HS Small Tray 25 cm, 225 F
- 642 Sauceboat and Saucer 25 cm, 417 F
- 650F Fluted Serving Dish 24 cm, 329 F
- 651 Oval Fruit Bowl 36 cm, 484 F
- 655 Sugar 9 cm, 146 F
- 656 Creamer 10 cl, 129 F
- 664S Pitcher 12 cl, 10 cm, 173 F
- 664M Pitcher 25 cl, 13 cm, 208 F
- 664 Pitcher 100 cl, 302 F
- 667 Jam Jar w/Spoon 17 cl, 179 F
- 668 Covered Butter Dish 19 cm, 269 F
- 673 Salt & Pepper Set 8,5 cm, 204 F
- 674L Candlestick 22 cm, 261 F
- 674LP Pair of Candlesticks 22 cm, 522 F
- 677 Strawberry Bowl/Chip & Dip 23 cm, 479 F
- 678 Fish Plate 25 cm, 265 F
- 680L Large Fish Platter 60 cm (same shape as 880L), 957 F
- 682L Flat Heart 11 cm, 90 F
- 691L 4-Piece Canister Set - (13, 16, 18 & 20 cm), 1259 F
- 694 Covered Tureen 2, 5 l, 1001 F
- 694P Covered Tureen w/Platter (638), 1593 F
- 695 Duck Jardinière 25 cm, 519 F

NOTE: One distinctive array of flowers has been chosen for each of the plates (601, 602, 604, 605, and 610) as shown. All accessory motifs are created individually by the artist, using the same color palette, thus making each array of flowers unique.



843/44



845/46

847

### QUIMPER BAKERS

Oven proof and microwave safe. As does old French cookware our bakers craze with use, adding to its charm.

- 843 Oval Baker 33 cm, 338 F
- 844 Large Oval Baker 36 cm, 371 F
- 845 Covered Casserole holds 1, 8 l, 469 F
- 846 Large Covered Casserole holds 4 l, 634 F
- 847 Rectangular Baker 34 cm x 22 cm, 396 F

- 143SY Oval Baker 33 cm, 338 F
- 144SY Large Oval Baker 36 cm, 371 F
- 145SY Covered Casserole 1, 8 l, 469 F
- 146SY Large Covered Casserole 4 l, 634 F
- 147SY Rectangular Baker 34 cm x 22 cm, 396 F



147SY

143/44SY

145/46SY

645/46



643/44

647

- 643 Oval Baker 33 cm, 338 F
- 644 Large Oval Baker 36 cm, 371 F
- 645 Covered Casserole 1, 8 l, 469 F
- 646 Large Covered Casserole 4 l, 634 F
- 647 Rectangular Baker 34 cm x 22 cm, 396 F

- 143MB Oval Baker 33 cm, 338 F
- 144MB Large Oval Baker 36 cm, 371 F
- 145MB Covered Casserole holds 1, 8 l, 469 F
- 146MB Large Covered Casserole 4 l, 634 F
- 147MB Rectangular Baker 34 cm x 22 cm, 396 F



147MB

145/46MB

143/44MB

28



116SY



116MB

- 116SY Chick Egg Cup 5 cm, 108 F
- 116MB Chick Egg Cup 5 cm, 108 F



- 41 Fleur de Lys Holy Water Font 12 cm, 227 F



- Saint Anne Statue 463/2 16 cm, 225 F
- 463/3 25 cm, 419 F



- 412 Petit Coq 11 cm, 221 F



1723SY



1723MB



8723



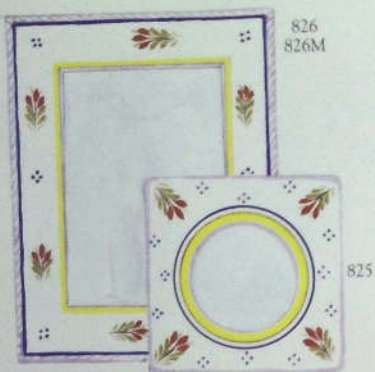
6723



- 696R Rabbit 14 x 11 cm, 290 F

- 6723 Decorative Egg with stand 8 cm, 119F
- 1723SY Decorative Egg with stand 8 cm, 119F
- 1723MB Decorative Egg with stand 8 cm, 119F
- 8723 Decorative Egg with stand 8 cm, 119F





826  
826M



626  
626M

625

826 Rect. Photo Frame (holds 10 cm x 15 cm picture), 304 F  
 826M Rect. Photo Frame (holds 13 cm x 18 cm picture), 354 F  
 825 Square Photo Frame 12.5 x 12.5 cm, 273 F  
 626 Rect. Photo Frame (holds 10 cm x 15 cm picture), 304 F  
 626M Rect. Photo Frame (holds 13 cm x 18 cm picture), 354 F  
 625 Square Photo Frame 12.5 x 12.5 cm, 273 F  
 80/1S Sm. Round Lamp with shade 40 cm, 705 F  
 80/1 Sm. Round Lamp without shade 22 cm, 461 F  
 80/3S Lg. Round Lamp with shade 66 cm, 1345 F  
 80/3 Lg. Round Lamp without shade 36 cm, 903 F  
 Available in Henriot (Man or Woman) or Fleuri Royal.



80/1S  
80/3S



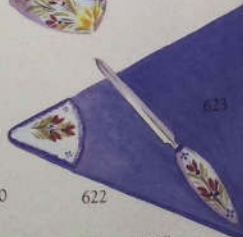
624



627



620



623



821

822



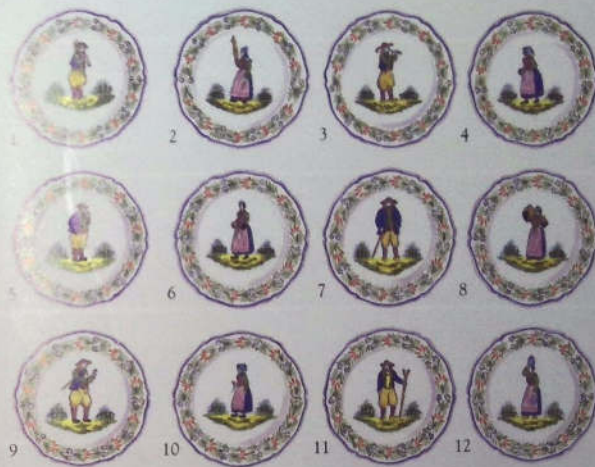
824

620 Pencil Cup 10 cm, 169 F  
 621 Pencil Tray 20 cm, 152 F  
 622 Desk Blotter 30 x 48 cm, 392 F  
 623 Letter Opener 21 cm, 152 F  
 624 Letter Holder 10 x 15 cm, 242 F  
 627 Inkwell 8 cm, 309 F

820 Pencil Cup 10 cm, 169 F 822 Desk Blotter 30 cm x 48 cm, 392 F 824 Letter Holder 10 cm x 15 cm, 242 F  
 821 Pencil Tray 20 cm, 152 F 823 Letter Opener 21 cm, 152 F  
 827 Inkwell 8 cm, 309 F

## "Decor"

### PAYSAN



Wall Plates with hole for hanging 25 cm, 323 F

Paysan, intricately painted, depicts a series of 12 figures. Place settings and accessories shown are stocked in figures noted (please order by number). Our full line of forms shown in this catalogue may be special ordered with your choice of figure.



901 Dinner Plate 28 cm, 386 F  
 902 Luncheon/Dinner Plate 25 cm, 311 F  
 904 Salad Plate 21 cm, 273 F  
 905 Bread/Butter Plate 18 cm, 227 F  
 903 Louis XV Dessert Plate 17 cm, 261 F  
 906 Louis XV Cup & Saucer 20 cl, 319 F  
 932 Louis XV Coffee Pot 12 cups, 905 F  
 933 Louis XV Sugar 12 p, 500 F  
 934 Louis XV Creamer 30 cl, 346 F  
 937 Louis XV Cake Platter 28 cm, 744 F  
 953 Cake Knife 24 cm, 238 F

HB / HENRIOT • QUIMPER



## DÉCOR "GENRE ANCIEN"



## DÉCOR "MUSÉE"





## DÉCOR "RÉVOLUTION"



### "WALLPLATES"

Looking back at the history of the factory, plates and bowls were the first articles made by the early Quimper potters. We are continuing this tradition with an attractive selection of plates, which are fully handpainted by individual artists at our workshop in Quimper. These plates make a decorative wall display (hole for hanging on the back) and are unusual when used as luncheon or dinner plates in assorted decors. 10" dia. Please order by number indicated.

Revolution Wall Plates	300 F
Genre Ancien Wall Plates	300 F
Musee Wall Plates	300 F
Paysan Wall Plates	323 F

## "Decors" FLEURI and CAMPAGNE



493



478



539F, 540F, 540FL



550F

HB/HENRIOT • QUIMPER





501-505

401-405



408



410



411



416



406



437HM, 437HS

Fleuri		Campagne	
401	220 F Dinner Plate 28 cm	501	240 F
402	186 F Luncheon Plate 25 cm	502	198 F
404	161 F Salad Plate 21 cm	504	175 F
405	133 F Bread/Butter Plate 18 cm	505	144 F
406	163 F Coffee Cup & Saucer 20 cl	506	188 F
408	122 F Lug Bowl 12 cm	508	142 F
410	113 F Rustic Bowl 11,5 cm	510	121 F
411	71 F Egg Cup 7 cm	511	81 F
416	108 F Chick Egg Cup 5 cm	516	108 F
437HM	434 F Med. Tray 38 cm	537 HM	502 F
437HS	204 F Small Tray 25 cm	537 HS	225 F



413



415



564



574, 574P

Fleuri		Campagne	
413	94 F Cider Cup 12 cl	513	102
415	152 F Mug 30 cl	515	173
464	271 F Pitcher 100 cl	564	302
474	198 F Candlestick 13 cm	574	236
474P	396 F Pair of Candlesticks 13 cm	574P	472

Fleuri and Campagne complementing patterns on ivory glaze, can either be collected individually or to coordinate. Items shown are available in either decor. For decor Fleuri order 400 #s. For decor Campagne with Breton figures order 500 #s. Please specify.



528



429



469



470



592SH



432A

FROM COVER:

Fleuri		Campagne	
439F	221 F Vegetable Bowl 22 cm	539F	302 F
440F	350 F Vegetable/Salad Bowl 25 cm	540F	390 F
440FL	438 F Large Salad/Pasta Bowl 29 cm	540FL	484 F
450F	194 F Fluted Serving Dish 24 cm	550F	329 F
478	233 F Fish Plate 25 cm	578	265 F
493	169 F Menu Plaque 14 x 10 cm	593	192 F

Fleuri

Campagne



536



473



535



468



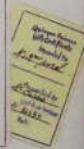
451

Fleuri		Campagne	
428	475 F Begonia Vase 22 cm	528	536 F
429	121 F Wall Pocket 20 cm	529	138 F
432A	375 F Teapot 5 cups	532A	394 F
435	192 F Sugar 11 cm	535	217 F
436	142 F Creamer 18 cl	536	158 F
451	354 F Tray 32 cm	551	396 F
468	248 F Covered Butter Dish 19 cm	568	269 F
469	138 F Butter Dish 18 cm	569	154 F
470	100 F Butter Knife 15 cm	570	131 F
473	170 F Salt & Pepper Set 8,5 cm	573	204 F
492SH	117 F Shell Dish 12 cm	592	129 F





Silk Scarves created by Paris designer Paule Le Goff made of pure silk with hand rolled and sewn edges. 87 cm x 87 cm, 600 F  
 SCF1 Floral  
 SCC2 Rooster  
 SCP3 Breton Figures  
 These three designs are available in any of the color combinations shown, please call so we may assist you.



Quimper Gift Certificate, the perfect gift. Simply specify amount, recipient's name and address. Gift Certificate is redeemable through our catalogue or retail shops.

HS440F Mint Chocolate  
 Hostess Box 8 pc.  
 HS440D Mint Chocolate  
 Individual (foil wrapped)  
 Not Available

Vieux Quimper, inspired by the paintings of Alfred Beau, Quimper artist and potter from the 1870's who created on earthenware detailed scenes depicting Breton Village life. Decorative wall plates 25 cm, 1051 F  
 VQ1 Breton Fisherman VQ2 Breton Flower Lady

#### ORDERING INFORMATION

We welcome telephone orders. Our number is 98.52.22.52. We are here to serve you Monday through Saturday 9 a.m. to 6 p.m. Or you may fax your order to us, 24 hours a day at 98.90.16.02.

If you have any questions or comments, please do not hesitate to write or phone us so we may assist you.

#### EXPEDITION

The items you select can be sent to you or to a recipient of your choice. Rush delivery can be arranged at the customer's expense.

France: When shipping to a French address, please add 10% for postage and insurance. For orders under 500 F also add a small handling charge of 20 F

Europe: When shipping to a Europe address, please add 15% for postage and insurance. For orders under 500 F also add a small handling charge of 30 F.

Other Countries: Please pay prices as shown. This price reflects the HT (tax free) with additional 20,6% for postage and insurance. A minimum order of 1000 F is required.

#### PAYMENT

For your convenience, we accept Carte Bleu, VISA or MasterCard. When ordering by mail you may also pay with a personal check drawn on a French bank. Please enclose your credit card number and expiration date or check with your order. Orders will be processed upon receipt of payment.

#### SPECIAL ITEMS & PERSONALIZATION

We can paint any form pictured in our catalogue in your choice of patterns. We take pride in never discontinuing a decor. Since each piece is individually handpainted, our artists can produce a piece to match any of our original patterns. Prices are quoted upon request.

Any item can be personalized. An additional 14 F per word or date is added to the price for this service.

#### CORPORATE & EXECUTIVE GIFTS

Our tradition of handpainting allows us to produce unique items and motifs exclusively designed for your business. Please call 98.90.09.36 and ask for Marie-Pierre Sezec.

#### GIFT OR BRIDAL REGISTRY

Let us help you collect Quimper. We offer the special service of registering your gift selections for weddings or other occasions. To register visit our shops or contact Customer Service. At your request, we will send our catalogue to your family and friends so they may call or write to choose gifts from your personal list.

#### OUR PRODUCT & GUARANTEE

As always, Quimper pottery is entirely handpainted in France. With the exception of our knives, Quimper is dishwasher safe. We do not recommend use in the microwave or oven.

We want our customers to be pleased. If you are not satisfied with any item you order, please return it to us for a refund or exchange, whichever you prefer.

#### VISIT OUR SHOPS

Faienceries de Quimper  
 Place Bérardier - Locmaria  
 BP 1219, 29102 Quimper  
 98.52.22.52

Quimper Faïence  
 84, rue Saint-Martin  
 75004 Paris  
 (1) 42.71.93.03

USA

39

Prices effective January 1, 1996



Our cover is dedicated to Pierre-Jakez Hélias, author of *The Horse of Pride*, an epic of peasant life in Brittany. Translated into 19 languages, his book chronicles life in a Breton village during the early 1900's and is a literary portrait of a lost culture. Hélias, recently deceased at age 81, wrote of his grandfather's life of poverty. He quotes his grandfather, "Since I am too poor to buy any other horse, at least the Horse of Pride will always have a stall in my stable."

Since reading Hélias' book, I have been attracted to artistic works depicting the Breton horse. Our cover, inspired by an engraving I recently found during my Christmas visit to Quimper, captures for me the romance and lore of Brittany.

The Bretons are a strong, romantic and proud people, and the horse was an integral part of daily peasant farm life—a dependable co-worker—a loyal companion. In homage to the Breton horse, we introduce this year our Quimper folk art horse reissued from an original mold designed early this century. We bring to you through our creations the mystique of Brittany's history, romance and folklore.

With warm regards,

Sarah Janssens



Horse Candlestick 23 × 12 cm, 421 F

**Quimper Faïence**

84 rue St Martin  
75004 Paris, France

**Faïenceries de Quimper**

Place Bérardier – Locmaria  
29102 Quimper, France

phone 98.52.22.52 • fax 98.90.16.02





QUIMPER  
& Noels



Quimper Noels are a continuing series of coordinating ornaments which capture the charm of Brittany country life. Each are handpainted by Quimper artists and dated in a limited edition of 1,000.

These collectibles are charming Christmas decorations during the season and decorative items throughout the year.

1980

FIRST SERIES: Pair of colorful oval plaques depicting "Les Bretons" traditional man and woman: dated 1980 blue border, 177 F\*; 1981 red border, 177 F\*; 1982 green border, 177 F. 8 cm



1981

1989

FOURTH SERIES: Heart shaped ornaments which depict "Les Oiseaux" the Brittany farm birds: dated 1989 "L'Oie Blanche", 211 F; 1990 "Le Coq", 211 F; 1991 "Le Canard", 211 F. 8 cm

FIFTH SERIES: Bagpipe shaped ornaments depicting "La vie champêtre" farm life of Brittany: dated 1992 "Breton woman", 238 F; 1993 "Breton man", 238 F; 1994 "Breton rooster", 238 F. 8 cm



1990

1991

SIXTH SERIES: Fish shaped ornaments depicting "L'Armor of Brittany" farming of the sea: dated 1995 "Fishwife", 198 F; 1996 "Fisherman", (available September 1996); 1997 "Sea Flowers", (available September 1997). 10 cm



1983

SECOND SERIES: Bells depicting "Les Sonneurs" the musicians: dated 1983 "Flute Player", 177 F\*; 1984 "Bagpiper", 177 F\*; 1985 "Drummer", 177 F\*. 6 cm



1985

THIRD SERIES: Round ornaments depicting "Les Artisans" women artisans of Brittany: dated 1986 "Spinner", 177 F; 1987 "Crepe Maker", 177 F; 1988 "Basket Weaver", 177 F. 6.5 cm



1984



1986



1987

1988



1993



1992



1994



1997

1995

1996

\*Limited edition (dated, blue glaze) not available. Unlimited (white glaze) only.



LES CHAPELLES DE BRETAGNE: A series of Christmas plates depicting the quaint chapels of Brittany, dating back to the 16th and 17th centuries. Four of these chapels have been handpainted by Quimper artists, dated and numbered — 24 cm. Set of 4, 3604 F



FIRST EDITION  
1984  
La Chapelle de Saint  
Thomas, 1640 dedicated  
to Saint Thomas  
Beckett. Edition 500.  
1001 F



THIRD EDITION  
1986  
La Chapelle de Tronen,  
1400's oldest cavalry in  
Brittany with 100 sculpted  
statues. Edition 250.  
1001 F

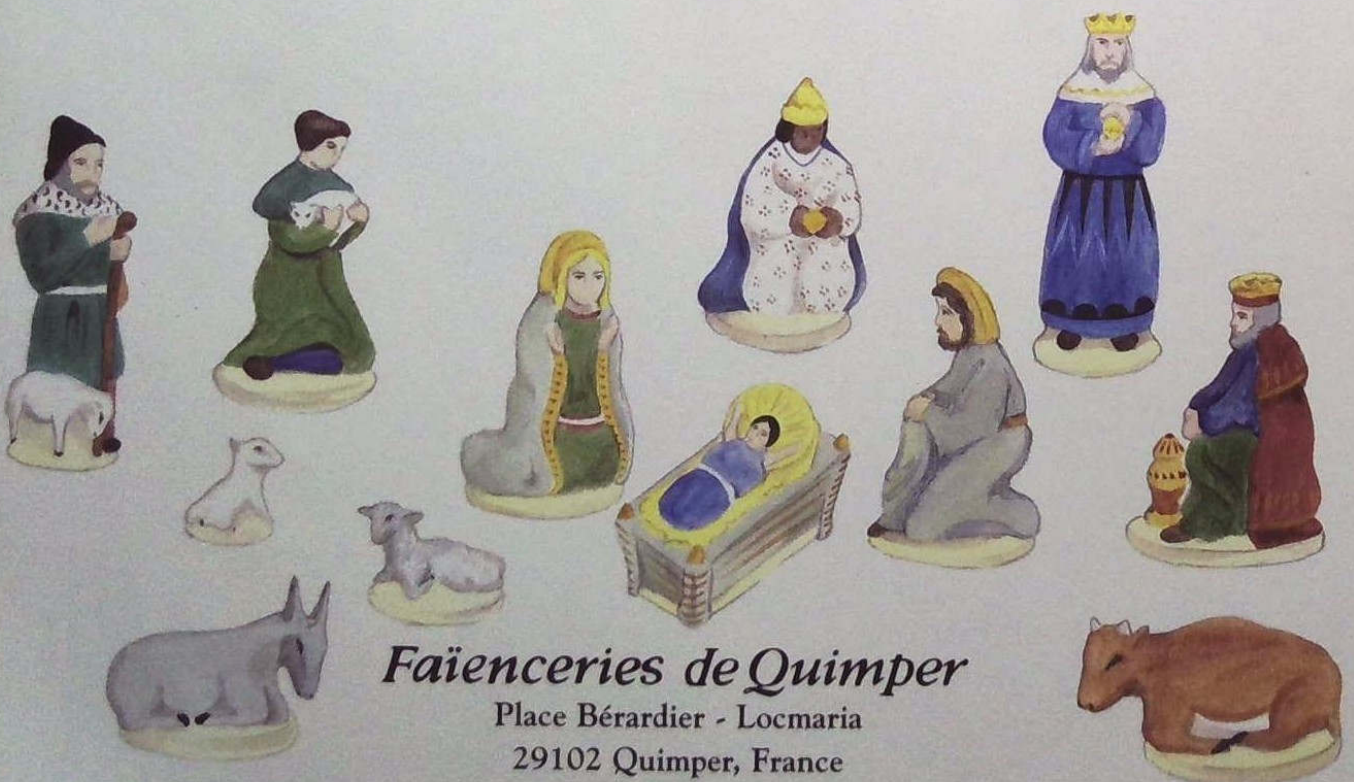


SECOND EDITION  
1985  
La Chapelle de Quilinen,  
1500's dedicated to Saint  
Mary. Edition 250. 1001 F



FOURTH EDITION  
1987  
La Chapelle de Saint  
Kadou, 1578 dedicated to  
Saint Kadou. Edition 250.  
1001 F

CRECHE SET: From the 1930s: Mary, Joseph, the Babe, three Wise Men, a shepherd, a shepherdess, an ox, a donkey, and two sheep. Height — (shepherd) 9,5 cm. Complete 12 piece set 1461 F. Also available in sets: CR1 Jesus, Mary, Joseph, 381 F; CR2 Three Maji, 644 F; CR3 Shepherd, Shepherdess, Two Lambs, Cow, Donkey, 594 F.



**Faienceries de Quimper**

Place Bérardier - Locmaria

29102 Quimper, France

98.52.22.52